

F.A.I. RTE.	SECTION	COUNTY	TOTAL SHEETS	SHEET NO.
90/94	2007-056 56	COOK	30	9
STA. 35+00		TO STA. 50+00		
FED. ROAD DIST. NO.	ILLINOIS FED. AID PROJECT			

SIGN TO BE COVERED IN ACCORDANCE WITH ART. 701.04

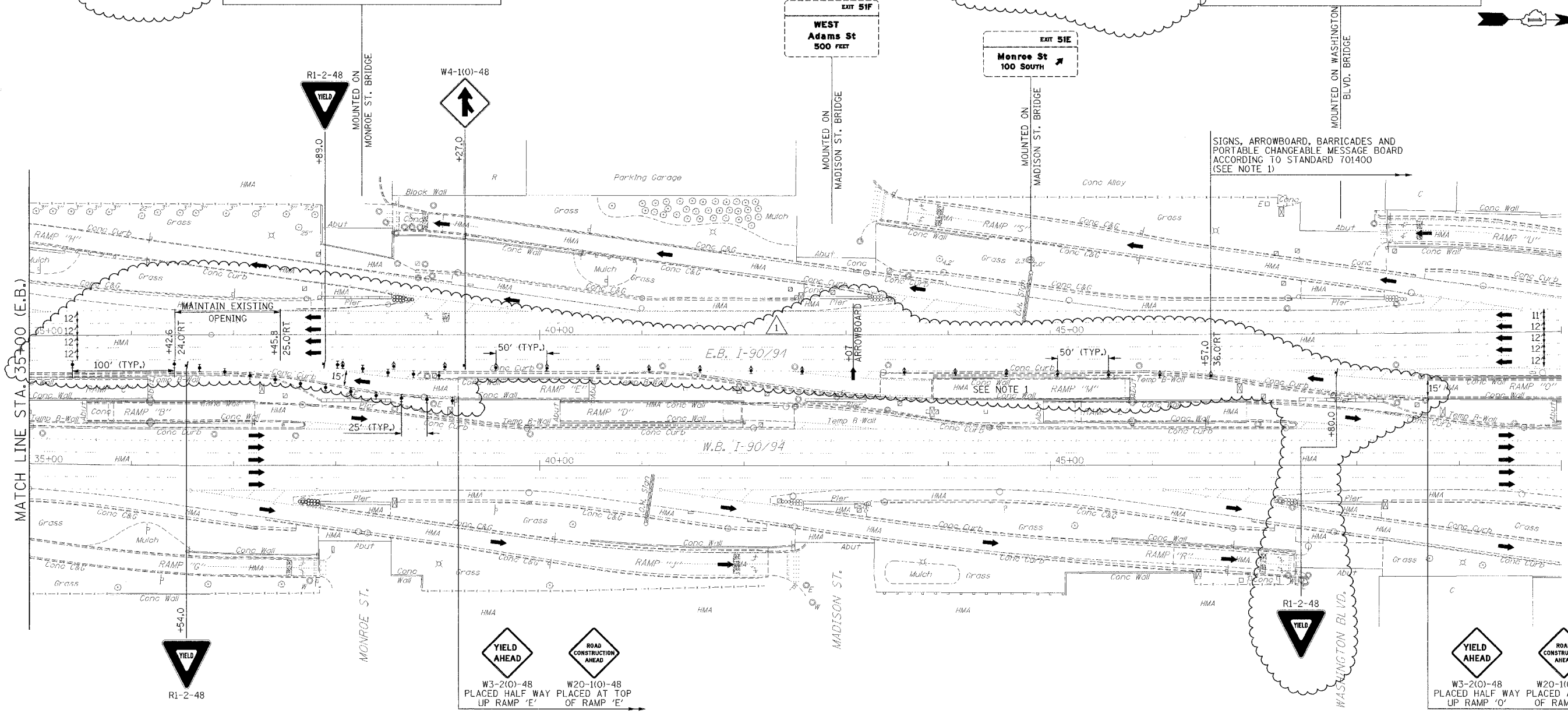
LEFT LANE ENDS 1000 FEET
 EAST Jackson Blvd 500 FEET
 WEST Adams St 200 SOUTH

OVERLAY - 144" x 36" 16" EM RED LETTERS ON WHITE REFLECTIVE BACKGROUND TO BE PAID FOR AS "TEMPORARY INFORMATION SIGNING"

LEFT LANE ENDS 2000 FEET
 Monroe St 500 FEET
 Madison St

DATE
BY
PLAN
NOTE BOOK NO.
FILE NAME

DATE
BY
PROFILE
NOTE BOOK NO.
FILE NAME



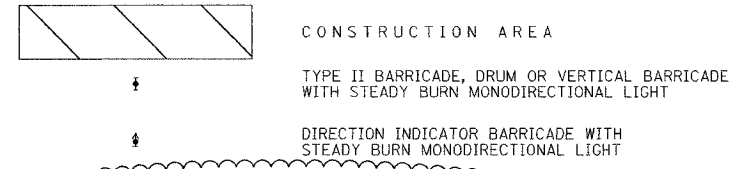
SIGNS, ARROWBOARD, BARRICADES AND PORTABLE CHANGEABLE MESSAGE BOARD ACCORDING TO STANDARD 701400 (SEE NOTE 1)

YIELD AHEAD
 W3-2(0)-48 PLACED HALF WAY UP RAMP 'E'

ROAD CONSTRUCTION AHEAD
 W20-1(0)-48 PLACED AT TOP OF RAMP 'E'

YIELD AHEAD
 W3-2(0)-48 PLACED HALF WAY UP RAMP 'O'

ROAD CONSTRUCTION AHEAD
 W20-1(0)-48 PLACED AT TOP OF RAMP 'O'



NOTES:

1. THE ELEVATED PORTION OF RAMP 'M' HAS ALREADY BEEN REMOVED AND THE RETAINED EARTH PORTION IS ALL THAT REMAINS.

ADDENDUM 1 - 1-3-08

ILLINOIS DEPARTMENT OF TRANSPORTATION
MAINTENANCE OF TRAFFIC
 I-90/94 KENNEDY EXPRESSWAY
 STAGE 1
 STA. 35+00 TO STA. 50+00

SCALE : 1" = 50'
 DATE : 10/31/07

DRAWN BY : DLZ
 CHECKED BY : GB