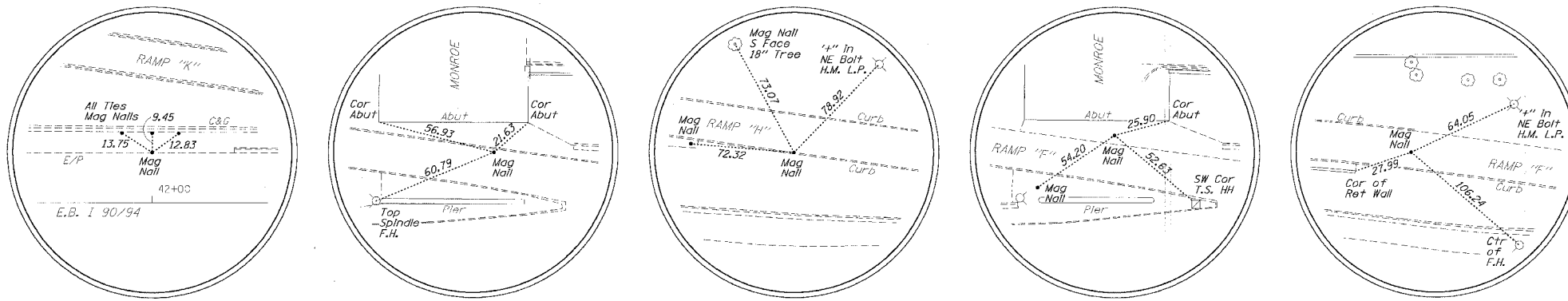


F.A.I. RTE.	SECTION	COUNTY	TOTAL SHEETS	SHEET NO.
90/94	2007-056 SG	COOK	30	5
STA.	TO STA.			
FED. ROAD DIST. NO.	ILLINOIS FED. AID PROJECT			



TIE 1

TIE 2

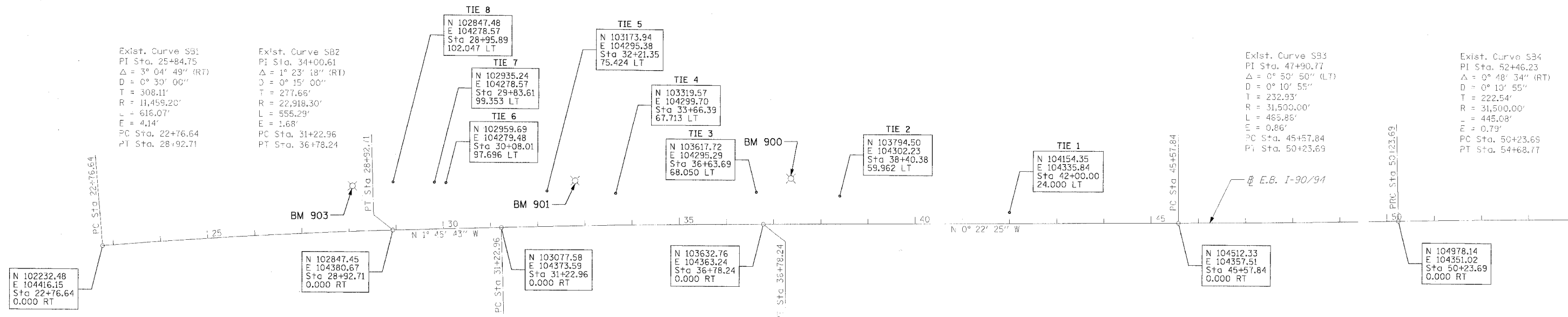
TIE 3

TIE 4

TIE 5

DATE	BY

DATE	BY



Exist. Curve SB1  
 PI Sta. 25+84.75  
 $\Delta = 3^{\circ} 04' 49''$  (RT)  
 $D = 0^{\circ} 30' 00''$   
 $T = 308.11'$   
 $R = 11,459.20'$   
 $L = 616.07'$   
 $E = 4.14'$   
 PC Sta. 22+76.64  
 PT Sta. 28+92.71

Exist. Curve SB2  
 PI Sta. 34+00.61  
 $\Delta = 1^{\circ} 23' 18''$  (RT)  
 $D = 0^{\circ} 15' 00''$   
 $T = 277.66'$   
 $R = 22,918.30'$   
 $L = 555.29'$   
 $E = 1.68'$   
 PC Sta. 31+22.96  
 PT Sta. 36+78.24

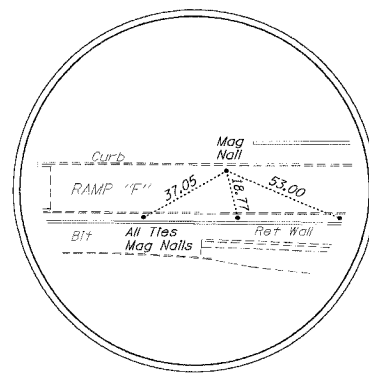
Exist. Curve SB3  
 PI Sta. 47+90.77  
 $\Delta = 0^{\circ} 50' 50''$  (LT)  
 $D = 0^{\circ} 10' 55''$   
 $T = 232.93'$   
 $R = 31,500.00'$   
 $L = 465.86'$   
 $E = 0.86'$   
 PC Sta. 45+57.84  
 PT Sta. 50+23.69

Exist. Curve SB4  
 PI Sta. 52+46.23  
 $\Delta = 0^{\circ} 48' 34''$  (RT)  
 $D = 0^{\circ} 10' 55''$   
 $T = 222.54'$   
 $R = 31,500.00'$   
 $L = 445.08'$   
 $E = 0.79'$   
 PC Sta. 50+23.69  
 PT Sta. 54+68.77

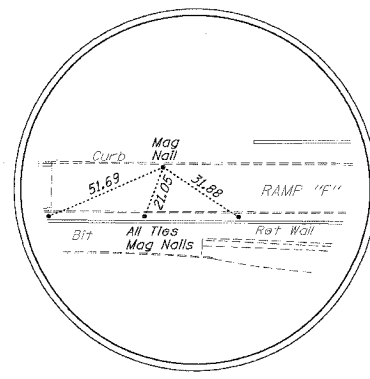
**BM 903**  
 N.E. ANCHOR BOLT OF  
 HIGH MAST LIGHT  
 28+10 - 96' LT  
 ELEV. = 583.59

**BM 901**  
 N.W. ANCHOR BOLT OF  
 HIGH MAST LIGHT  
 32+81 - 96' LT  
 ELEV. = 587.33

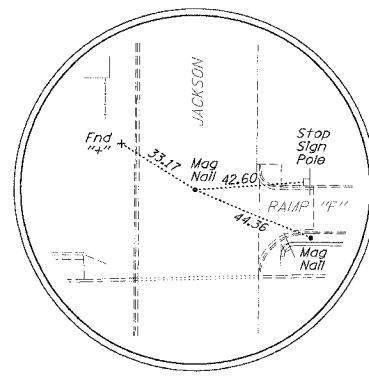
**BM 900**  
 N.E. ANCHOR BOLT OF  
 HIGH MAST LIGHT  
 37+37 - 97' LT  
 ELEV. = 587.84



TIE 6



TIE 7



TIE 8

REVISIONS	
NAME	DATE
ADDENDUM 1	8/16/06

ILLINOIS DEPARTMENT OF TRANSPORTATION

**ALIGNMENT & TIES**  
 I-90/94 KENNEDY EXPRESSWAY  
 STA. TO STA.

SCALE : 1" = 100'  
 DATE : 02/24/06

DRAWN BY : DLZ  
 CHECKED BY : GB