

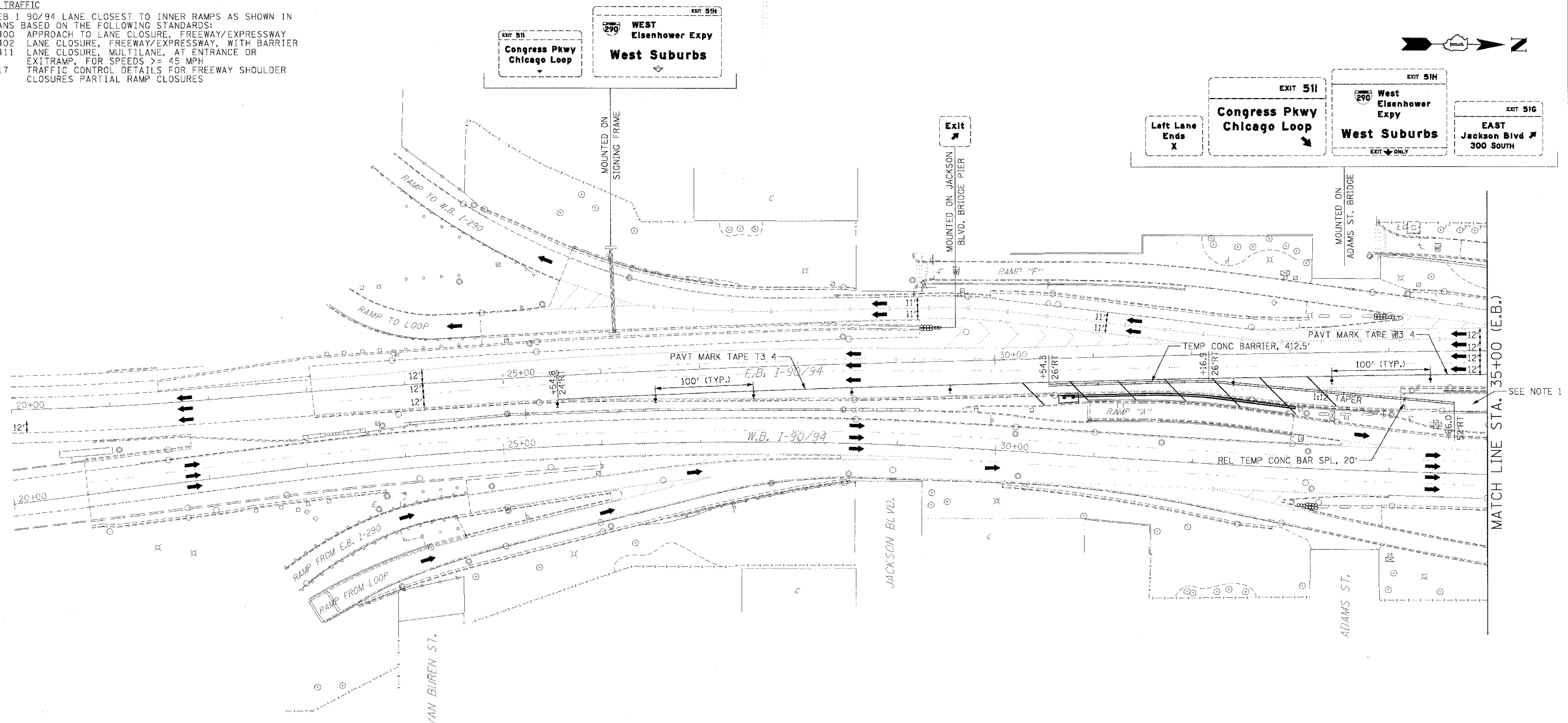
F.A.I. RTE.	SECTION	COUNTY	TOTAL SHEETS	SHEET NO.
90/94	2007-056 5G	COOK	30	8
STA. 20+00		TO STA. 35+00		
FED. ROAD DIST. NO.		ILLINOIS FED. AID PROJECT		

STAGE 1 CONSTRUCTION
 CONSTRUCT SIGNING FRAME FOUNDATION LOCATED IN MEDIAN BETWEEN EASTBOUND I-90/94 AND WESTBOUND I-90/94 AND PLACE TEMPORARY CONCRETE BARRIER.

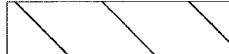



STAGE 1 TRAFFIC
 CLOSE EB I 90/94 LANE CLOSEST TO INNER RAMPS AS SHOWN IN THE PLANS BASED ON THE FOLLOWING STANDARDS:
 701400 APPROACH TO LANE CLOSURE, FREEWAY/EXPRESSWAY
 701402 LANE CLOSURE, FREEWAY/EXPRESSWAY, WITH BARRIER
 701411 LANE CLOSURE, MULTILANE, AT ENTRANCE OR EXITRAMP, FOR SPEEDS >= 45 MPH
 TC-17 TRAFFIC CONTROL DETAILS FOR FREEWAY SHOULDER CLOSURES PARTIAL RAMP CLOSURES

DATE	BY	REVISION

DATE	BY	REVISION



NOTES:
 1. THE ELEVATED PORTION OF RAMP 'C' HAS ALREADY BEEN REMOVED AND THE RETAINED EARTH PORTION IS ALL THAT REMAINS.

-  CONSTRUCTION AREA
-  TYPE II BARRICADE, DRUM OR VERTICAL BARRICADE WITH STEADY BURN MONODIRECTIONAL LIGHT
-  DIRECTION INDICATOR BARRICADE WITH STEADY BURN MONODIRECTIONAL LIGHT
-  CONE, DRUM OR BARRICADE

ILLINOIS DEPARTMENT OF TRANSPORTATION
MAINTENANCE OF TRAFFIC
 I-90/94 KENNEDY EXPRESSWAY
 STAGE 1
 STA. 20+00 TO STA. 35+00
 SCALE : 1" = 50'
 DATE : 10/31/07
 DRAWN BY : DLZ
 CHECKED BY : GB