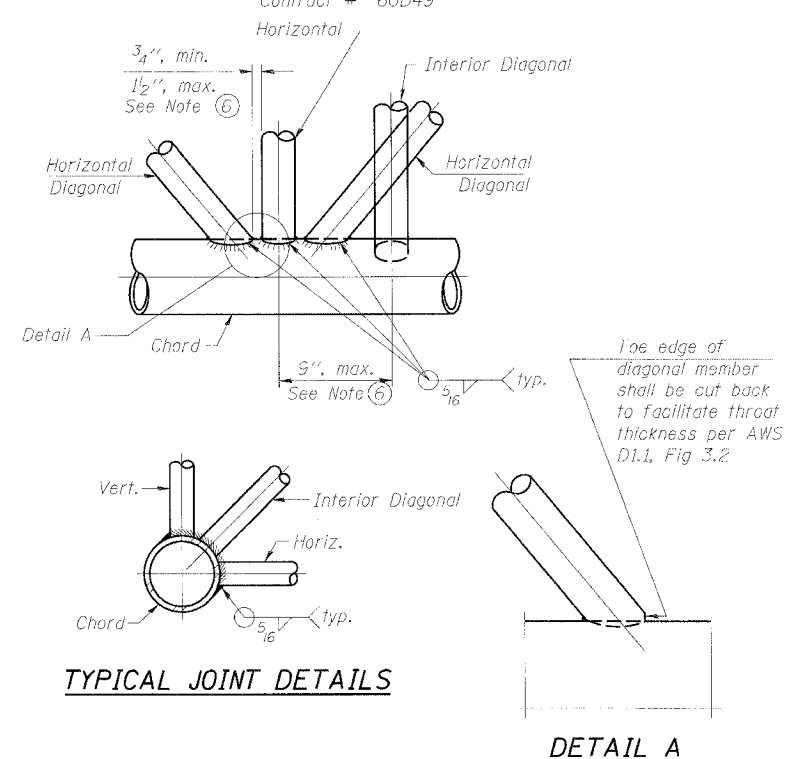
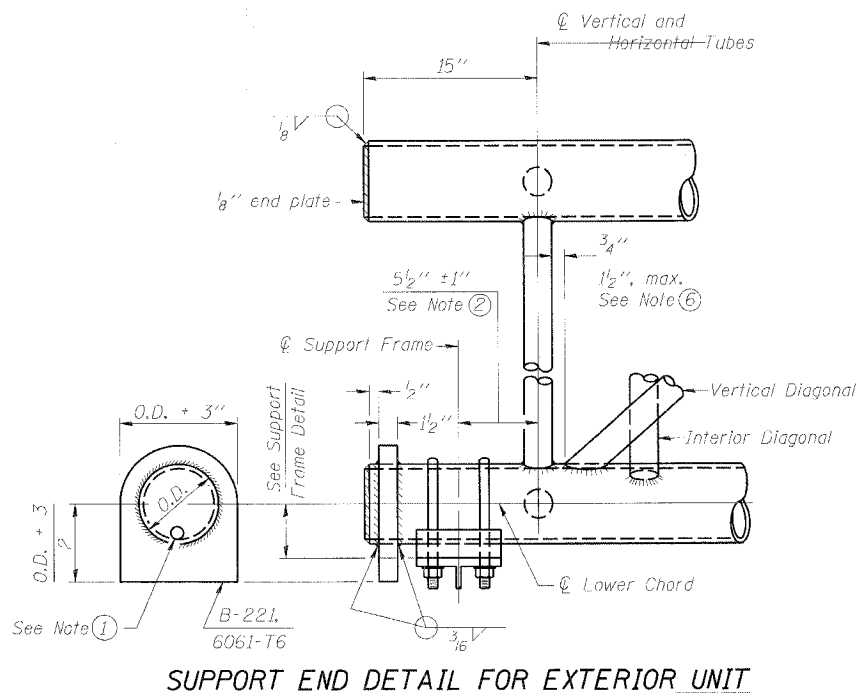
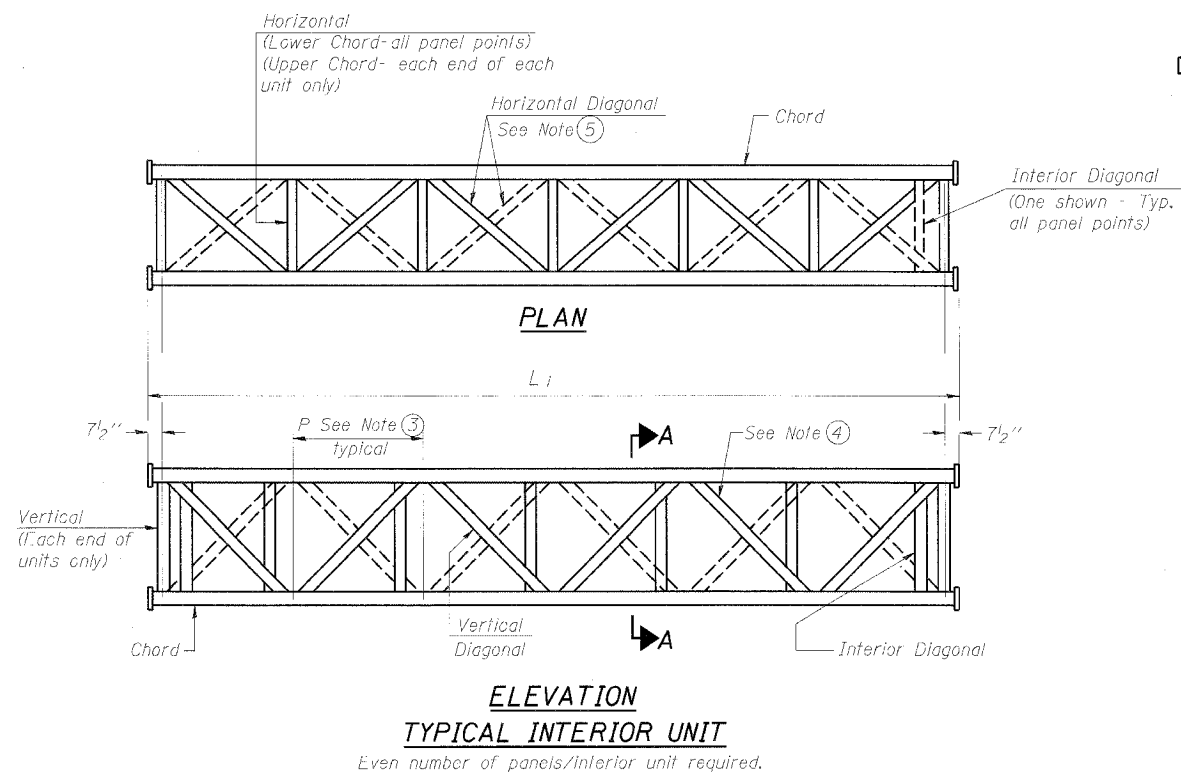


STATE OF ILLINOIS
DEPARTMENT OF TRANSPORTATION

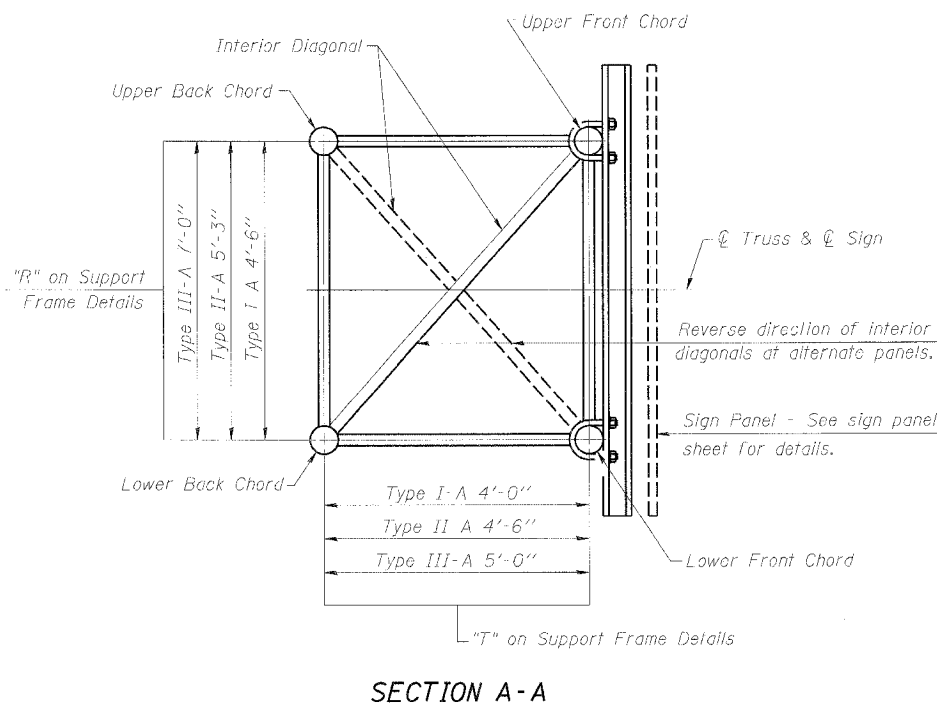
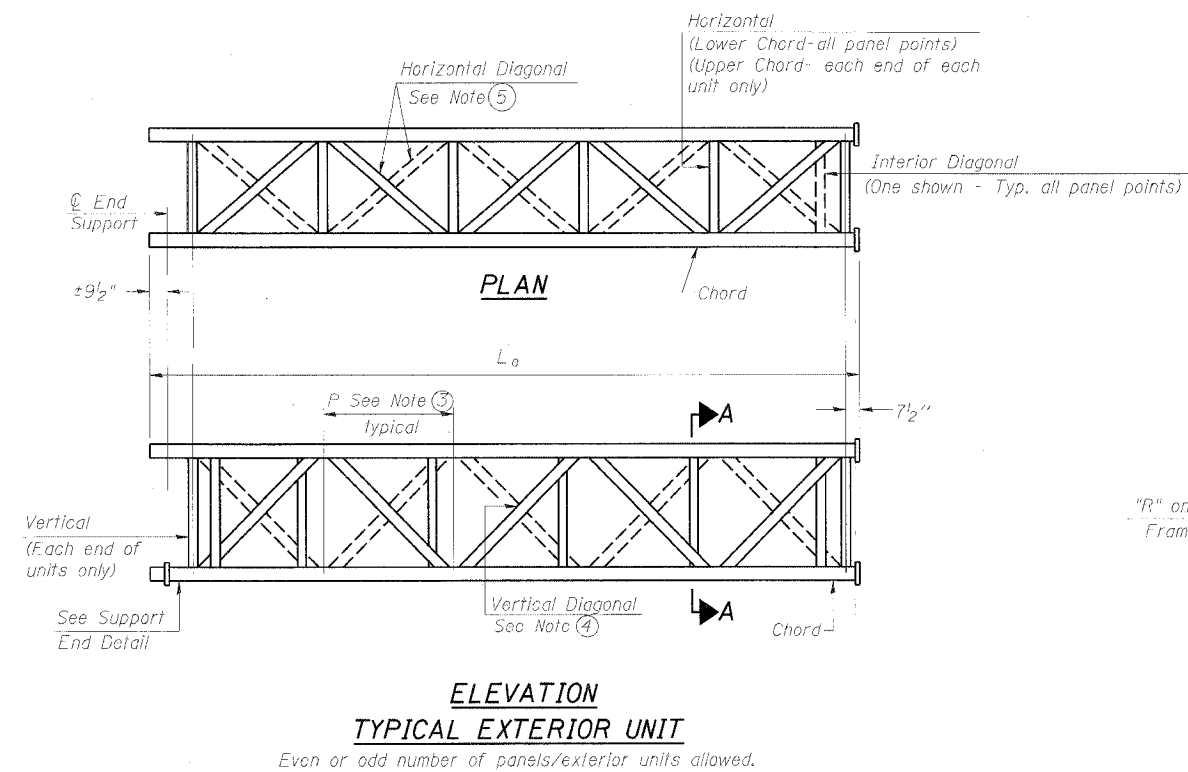
| | | | | |
|----------------------|--------------|------------------|--------------|-----------|
| DESIGN NO. | SECTION | COUNTY | TOTAL SHEETS | SHEET NO. |
| FAI 90/94 | 200/056 5G | COOK | 30 | 14 |
| FED. AID PROJ. NO. 1 | S. I. NUMBER | FED. AID PROJECT | | |

SHEET NO. 2
12 SHEETS

Contract # 60D49



- NOTES**
- Contractor may alternatively use standard aluminum drive-fit cap to close end. 1/2" φ drain hole in end plate/drive-fit cap. (Typ. at ends of all chords)
 - 5 1/2" end dimension may vary by ± 1" to provide uniform panel spacing (P).
 - Panel spacing (P) shall be uniform for entire truss and between 4'-0" and 5'-0" for Type I-A or 4'-0" and 5'-6" for Types II-A and III-A.
 - Vertical Diagonals in front and back face shall alternate.
 - Hidden lines show wind bracing alternate direction between planes of top and bottom chords.
 - All diagonals shall be detailed for minimum offset from the panel point based on the following: Offset shall be such as to provide a 3/4" minimum to 1 1/2" maximum clearance between any diagonal and any horizontal or vertical member, and to provide clearance for U-bolt connections of signs or walkway brackets.



| | |
|----------|-----|
| DESIGNED | ASP |
| CHECKED | RLP |
| DRAWN | BEM |
| CHECKED | ASP |

| | |
|----------|-----|
| EXAMINED | 200 |
| PASSED | |

| NUMBER | REVISION | DATE |
|--------|----------|------|
| | | |
| | | |
| | | |

OS-A-2 6/01/2007

OVERHEAD SIGN STRUCTURES
ALUMINUM TRUSS DETAILS
FOR TRUSS TYPES I-A, II-A AND III-A

I-90/94 KENNEDY EXPRESSWAY
(HUBBARDS CAVE TO I-290)
STATION 30+74.00 (190/94)
COOK COUNTY
STRUCTURE NUMBER 1S016I094L051.5