

FOR INDEX OF SHEETS, SEE SHEET 2

STATE OF ILLINOIS
DEPARTMENT OF TRANSPORTATION
DIVISION OF HIGHWAYS

F.A.P. RTE.	SECTION	COUNTY	TOTAL SHEETS	SHEET NO.
374	2007-060 I	COOK	21	1

CONTRACT NO. 60D80

PROJECT LOCATED IN CITY OF PROSPECT HEIGHTS, VILLAGE OF GLENVIEW AND FOREST PRESERVE DISTRICT OF COOK COUNTY

DESIGN DESIGNATION:

2750 (20) OTHER PRINCIPAL ARTERIAL 6.03 (PCC-20)

TRAFFIC DATA:

ADT 24530 (1998)
27500 (2020)
33000 (2030)
POSTED SPEED 40 MPH
DESIGN SPEED 45 MPH

PROPOSED
HIGHWAY PLANS

FAP ROUTE 374 (IL ROUTE 21), MILWAUKEE AVE.

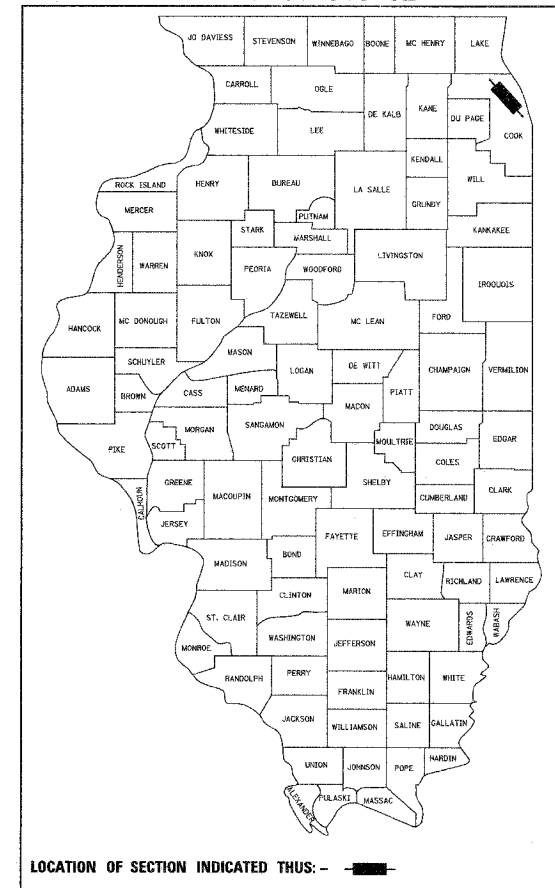
SECTION 2007-060 I

~~PROJECT NO.~~

SOUTH OF WILLOW ROAD TO NORTH OF SANDERS ROAD

TREE REMOVAL
COOK COUNTY
C-91-114-08

D-91-048-02



DESCRIPTION:

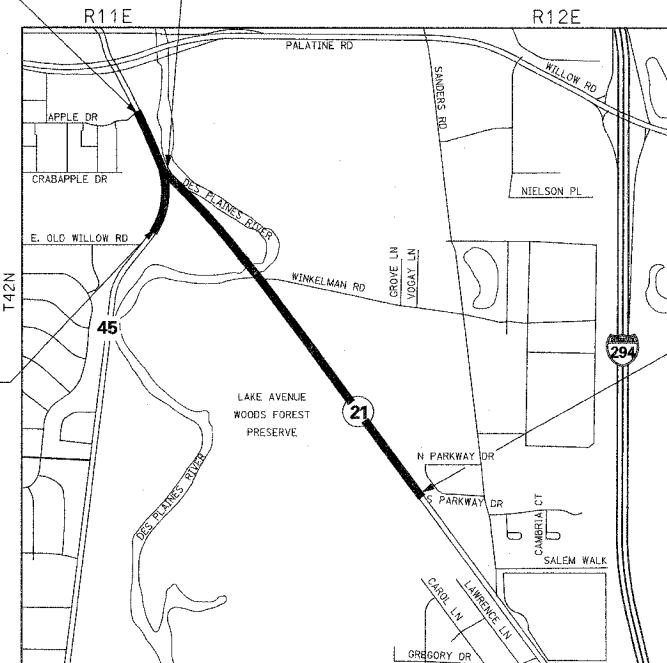
THIS PROJECT CONSISTS OF TREE REMOVAL FOR ROADWAY RECONSTRUCTION.

PROJECT BEGINS
IL ROUTE 21
STATION 113+62

PROJECT ENDS
US ROUTE 45
STATION 306+29.13

PROJECT BEGINS
US ROUTE 45
STATION 300+00

PROJECT ENDS
IL ROUTE 21
STATION 175+71



NORTHFIELD TOWNSHIP
LOCATION MAP
SCALE: 1"=1000'

GROSS LENGTH OF IMPROVEMENT 6,209.00 FEET = 1.176 MILES
NET LENGTH OF IMPROVEMENT 6,209.00 FEET = 1.176 MILES

STATE OF ILLINOIS
DEPARTMENT OF TRANSPORTATION
DIVISION OF HIGHWAYS

SUBMITTED Oct 19 20 07

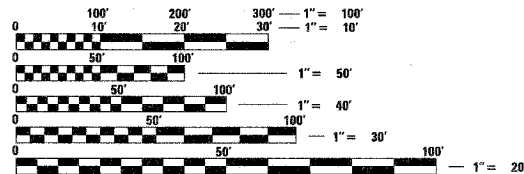
Diane S. Kuebel
DEPUTY DIRECTOR OF HIGHWAYS, REGION 1 ENGINEER

December 7, 20 07
Eric E. Haran
ENGINEER OF DESIGN AND ENVIRONMENT

December 7, 20 07
Christina M. Reed
DIRECTOR, DIVISION OF HIGHWAYS

STV Incorporated
engineers/architects/scientists/construction managers
200 W Monroe - Suite 1650
Chicago, Illinois 60606
(312) 553-0655
FAX: (312) 553-0661

PRINTED BY THE AUTHORITY
OF THE STATE OF ILLINOIS



FULL SIZE PLANS HAVE BEEN PREPARED USING STANDARD ENGINEERING SCALES. REDUCED SIZED PLANS WILL NOT CONFORM TO STANDARD SCALES. IN MAKING MEASUREMENTS ON REDUCED PLANS, THE ABOVE SCALES MAY BE USED.

J.U.L.I.E.
JOINT UTILITY LOCATION INFORMATION FOR EXCAVATION
1-800-892-0123

CONTRACT NO. 60D80

DISTRICT ONE CONSULTANT PROJECT MANAGER KURT NAUS - (847) 705-4232

10/19/07 11:30:09 AM