

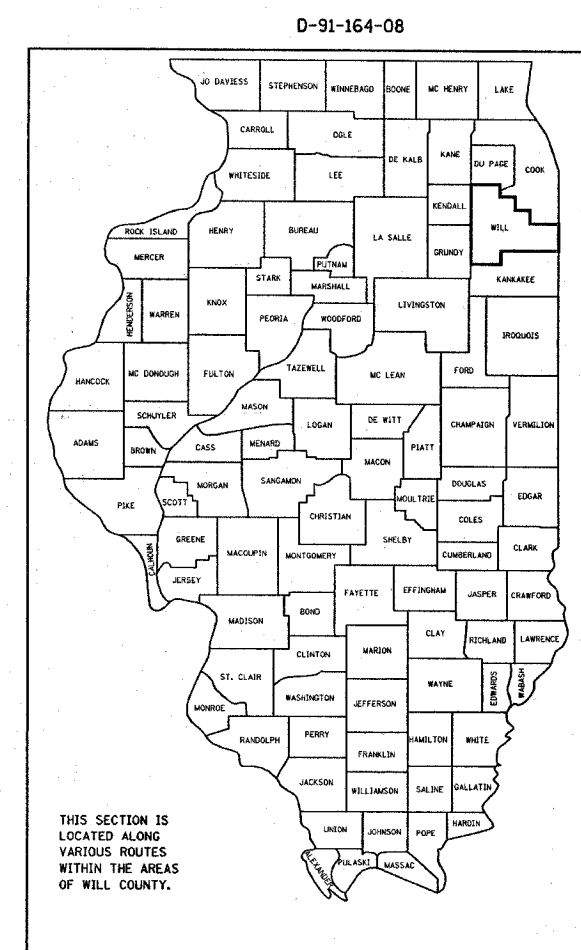
F.A. RTE.	SECTION	COUNTY	TOTAL SHEETS	SHEET NO.
VAR.	2007-065I	WILL	7	1

STATE OF ILLINOIS
DEPARTMENT OF TRANSPORTATION
DIVISION OF HIGHWAYS

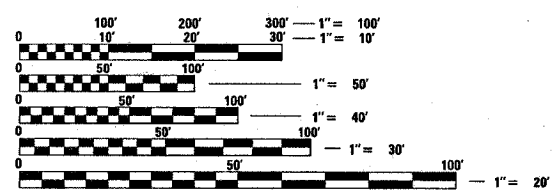
**PROPOSED
HIGHWAY PLANS**

ROUTE: VARIOUS WILL COUNTY
SECTION: 2007-065I
COUNTY: WILL
ARTERIAL HIGHWAY CLEANING (SWEEPING)
C-91-164-08

FOR INDEX OF SHEETS, SEE SHEET NO. 2



LOCATION MAPS - SEE INDEX OF SHEETS



FULL SIZE PLANS HAVE BEEN PREPARED USING STANDARD ENGINEERING SCALES. REDUCED SIZED PLANS WILL NOT CONFORM TO STANDARD SCALES. IN MAKING MEASUREMENTS ON REDUCED PLANS, THE ABOVE SCALES MAY BE USED.

J.U.L.I.E.
JOINT UTILITY LOCATION INFORMATION FOR EXCAVATION
1-800-892-0123

CONTRACT NO. 60E04

STATE OF ILLINOIS
DEPARTMENT OF TRANSPORTATION
DIVISION OF HIGHWAYS

SUBMITTED Dec 17 20 07
Diane O'Keefe
DEPUTY DIRECTOR OF HIGHWAYS, REGION ENGINEER

December 7, 20 07
Eric E. Harmon
ENGINEER OF DESIGN AND ENVIRONMENT

December 7, 20 07
Christine M. Reardon
DIRECTOR OF HIGHWAYS, CHIEF ENGINEER

**PRINTED BY THE AUTHORITY
OF THE STATE OF ILLINOIS**

DISTRICT ONE/ BUREAU OF DESIGN
PLAN PREPARATION ENGINEER: K. ENG/ R. BORO (847) 705-4178