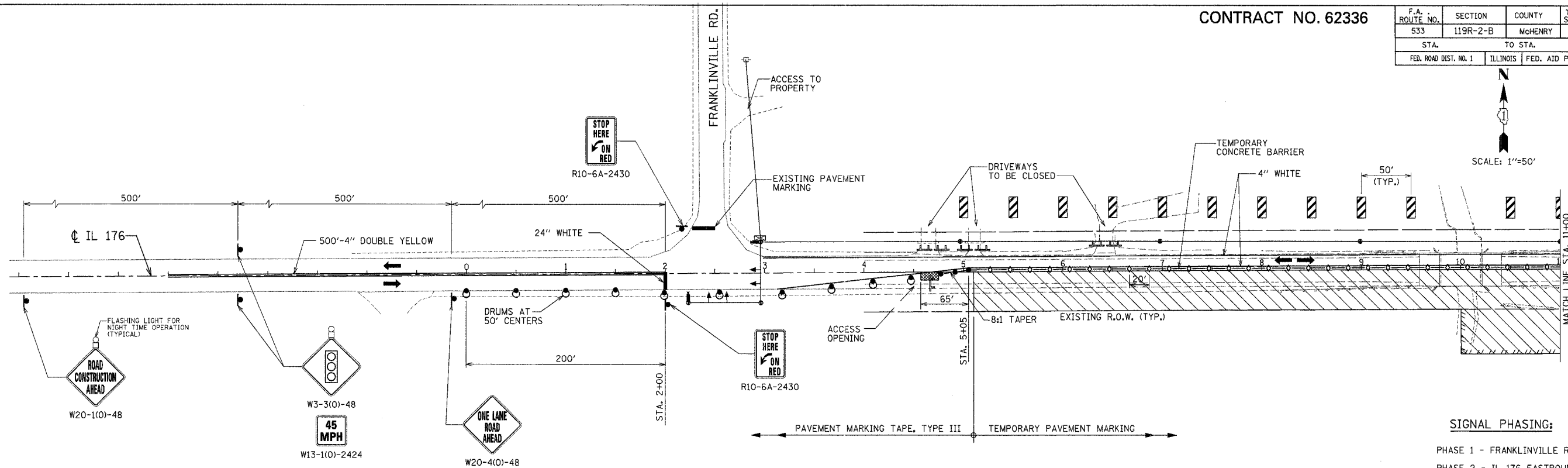
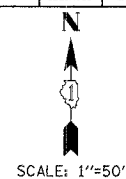


CONTRACT NO. 62336

F.A. ROUTE NO.	SECTION	COUNTY	TOTAL SHEETS	SHEET NO.
533	119R-2-B	McHENRY	64	8
STA. TO STA.		FED. ROAD DIST. NO. 1 ILLINOIS FED. AID PROJECT		



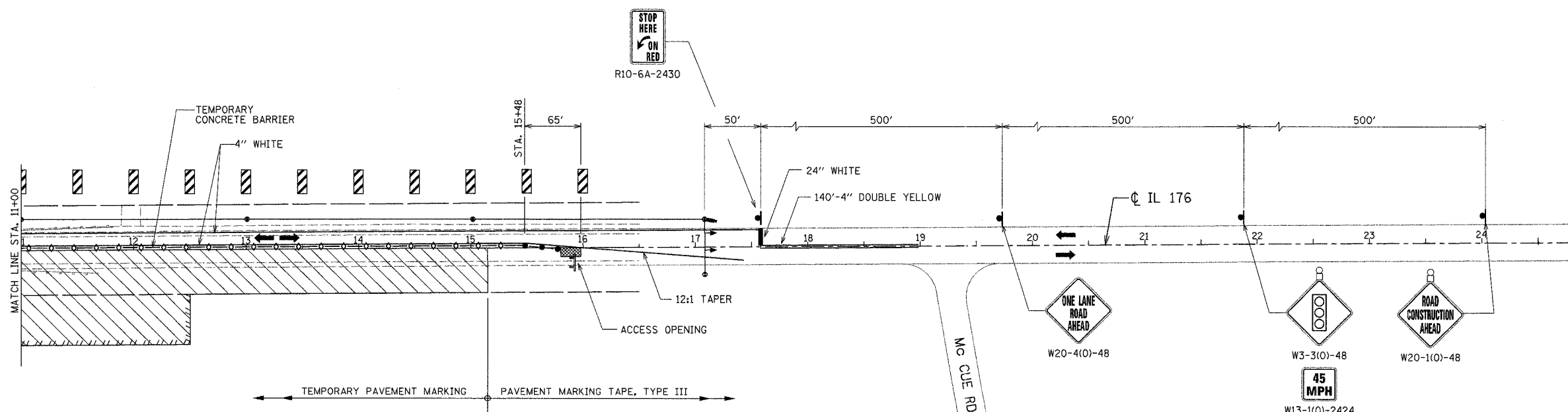
SIGNAL PHASING:
 PHASE 1 - FRANKLINVILLE RD.
 PHASE 2 - IL 176 EASTBOUND.
 PHASE 3 - IL 176 WESTBOUND.
 ALL PHASES BY ACTUATION.
 ALL SIGNALS WILL DWELL IN RED UNTIL ACTUATED.

NOTES:

- SEE BRIDGE GENERAL PLAN FOR BRIDGE STAGING AND DIMENSIONS.
- REFER TO STANDARD 701321

LEGEND:

- WORK AREA
- SIGN
- DRUM WITH STEADY BURNING LIGHT
- TEMPORARY CONCRETE BARRIER
- DOUBLE VERTICAL PANEL
- DIRECTION OF TRAFFIC
- TYPE C BIDIRECTIONAL REFLECTOR
- STEADY BURNING LIGHT AND DOUBLE VERTICAL PANEL
- IMPACT ATTENUATOR, TEMPORARY (NON-REDIRECTIVE)
- TRAFFIC SIGNAL
- TYPE III BARRICADE
- VIDEO VEHICLE DETECTION UNIT
- TEMPORARY TRAFFIC SIGNAL CONTROLLER
- TEMPORARY SERVICE INSTALLATION
- TEMPORARY WOOD POLE & AERIAL CABLE



REVISIONS		ILLINOIS DEPARTMENT OF TRANSPORTATION ILLINOIS ROUTE 176 OVER THE KISHWAUKEE RIVER SUGGESTED CONSTRUCTION STAGING STAGE I
NAME	DATE	
		SCALE: 1"=50'
		DATE: 10-05-07
		DRAWN BY: MW CHECKED BY: RJS

GRAEF, ANHALT, SCHLOEMER & ASSOCIATES, INC.
 CHICAGO, ILLINOIS
 FILE: H:\Jobs2002\20024023-01\CAD\DOT_Trans\dgn\00\M01_Plan01.dgn
 DATE: 05-Oct-07 15:21