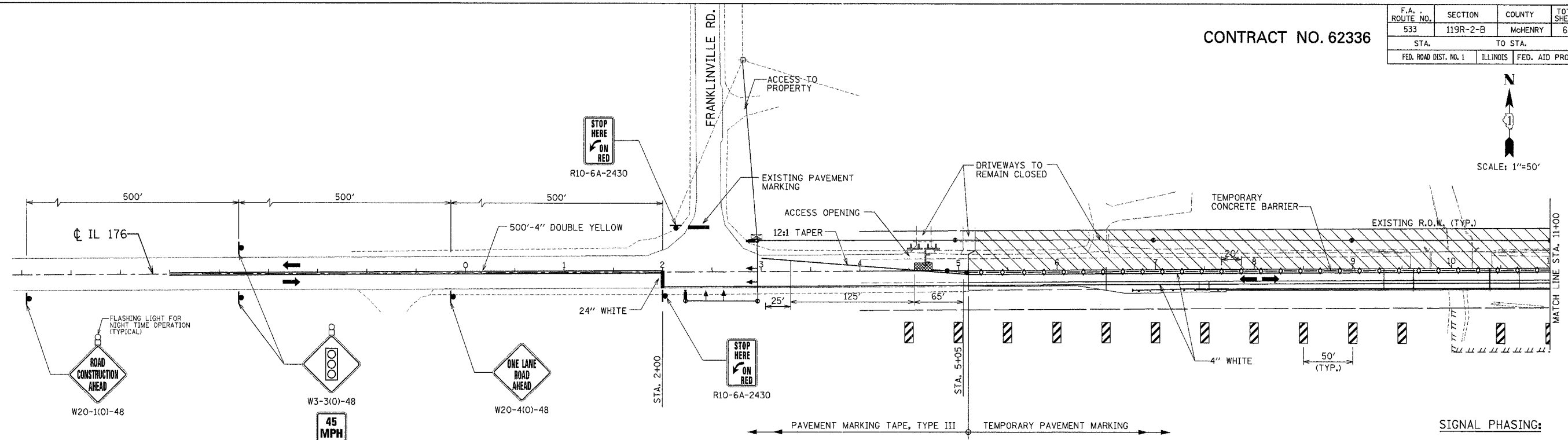
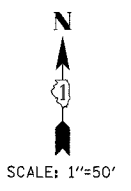


CONTRACT NO. 62336

F.A. ROUTE NO.	SECTION	COUNTY	TOTAL SHEETS	SHEET NO.
533	119R-2-B	McHENRY	64	9
STA.	TO STA.			
FED. ROAD DIST. NO. 1	ILLINOIS	FED. AID PROJECT		



SIGNAL PHASING:

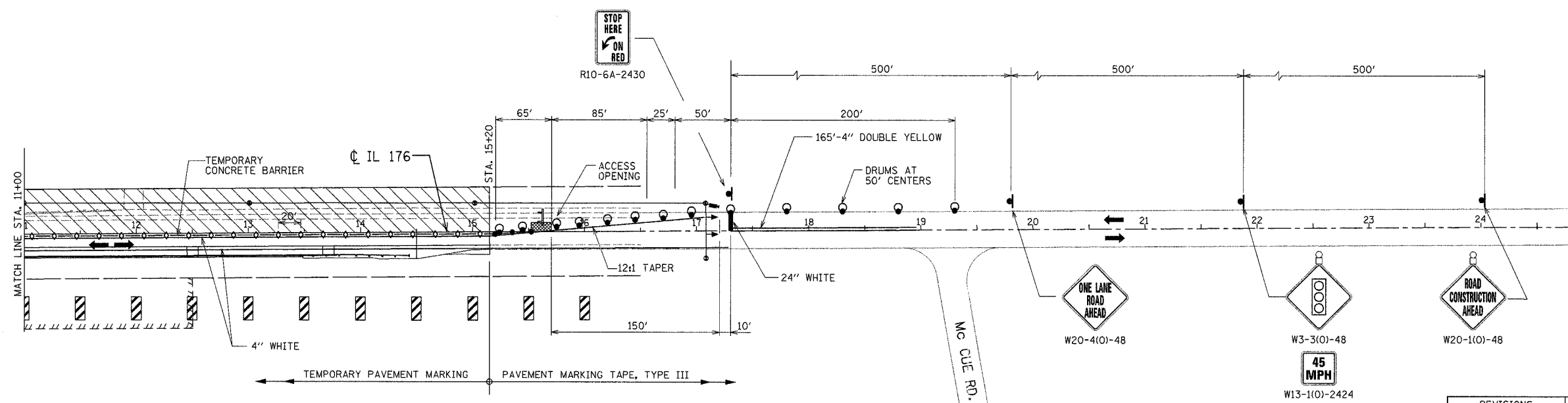
- PHASE 1 - FRANKLINVILLE RD.
- PHASE 2 - IL 176 EASTBOUND.
- PHASE 3 - IL 176 WESTBOUND.
- ALL PHASES BY ACTUATION.
- ALL SIGNALS WILL DWELL IN RED UNTIL ACTUATED.

NOTES:

1. SEE BRIDGE GENERAL PLAN FOR BRIDGE STAGING AND DIMENSIONS.
2. REFER TO STANDARD 701321

LEGEND:

- WORK AREA
- SIGN
- DRUM WITH STEADY BURNING LIGHT
- TEMPORARY CONCRETE BARRIER
- DOUBLE VERTICAL PANEL
- DIRECTION OF TRAFFIC
- TYPE C BIDIRECTIONAL REFLECTOR
- STEADY BURNING LIGHT AND DOUBLE VERTICAL PANEL
- IMPACT ATTENUATOR, TEMPORARY (NON-REDIRECTIVE)
- TRAFFIC SIGNAL
- TYPE III BARRICADE
- VIDEO VEHICLE DETECTION UNIT
- TEMPORARY TRAFFIC SIGNAL CONTROLLER
- TEMPORARY SERVICE INSTALLATION
- TEMPORARY WOOD POLE & AERIAL CABLE



REVISIONS	
NAME	DATE

ILLINOIS DEPARTMENT OF TRANSPORTATION
 ILLINOIS ROUTE 176 OVER
 THE KISHWAUKEE RIVER
 SUGGESTED
 CONSTRUCTION STAGING
 STAGE II
 SCALE: 1"=50'
 DATE: 10-05-07
 DRAWN BY: WS
 CHECKED BY: RJS

