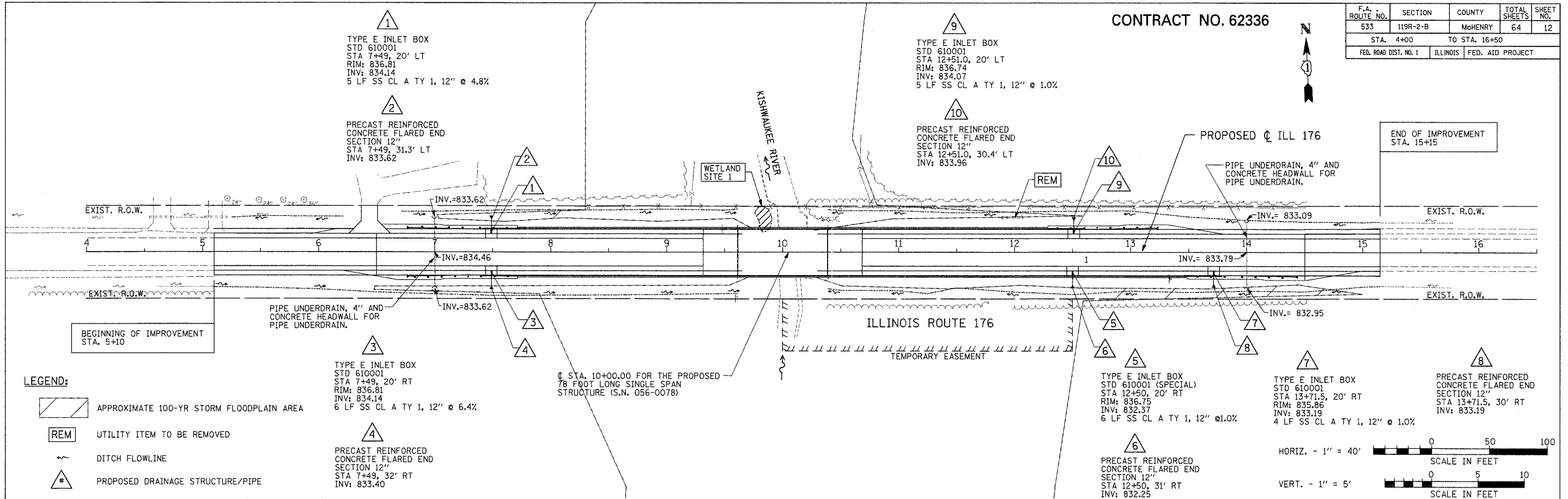


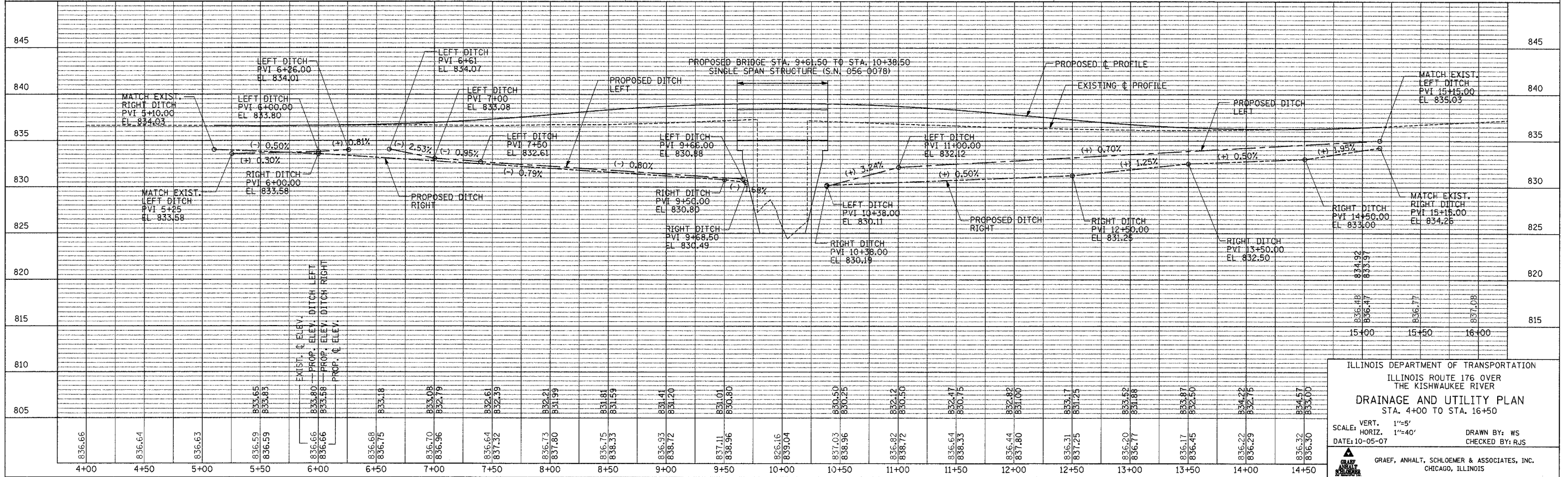
CONTRACT NO. 62336

F.A. ROUTE NO.	SECTION	COUNTY	TOTAL SHEETS	SHEET NO.
533	119R-2-B	McHENRY	64	12
STA. 4+00		TO STA. 16+50		
FED. ROAD DIST. NO. 1		ILLINOIS FED. AID PROJECT		



LEGEND:

- APPROXIMATE 100-YR STORM FLOODPLAIN AREA
- UTILITY ITEM TO BE REMOVED
- DITCH FLOWLINE
- PROPOSED DRAINAGE STRUCTURE/PIPE



DRAINAGE AND UTILITY PLAN

ILLINOIS DEPARTMENT OF TRANSPORTATION
ILLINOIS ROUTE 176 OVER THE KISHWAUKEE RIVER
DRAINAGE AND UTILITY PLAN
STA. 4+00 TO STA. 16+50

SCALE: VERT. 1"=5'
HORIZ. 1"=40'

DATE: 10-05-07

DRAWN BY: WS
CHECKED BY: RJS

GRAEF, ANHALT, SCHLOEMER & ASSOCIATES, INC.
CHICAGO, ILLINOIS

FILE: H:\Job\2002\20024023-01\CAD\DOT1.Trans\ dgn\plan_u1101.dgn
DATE: 05-01-07 15:06