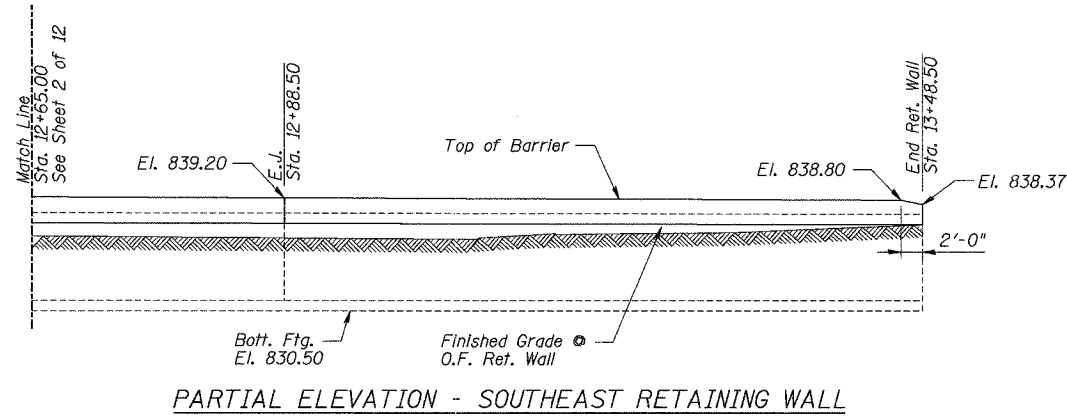


ROUTE NO.	SECTION	COUNTY	TOTAL SHEETS	SHEET NO.
533	119R-2B	McHenry	64	38
FED. ROAD DIST.		ILLINOIS	FED. AID PROJECT-	

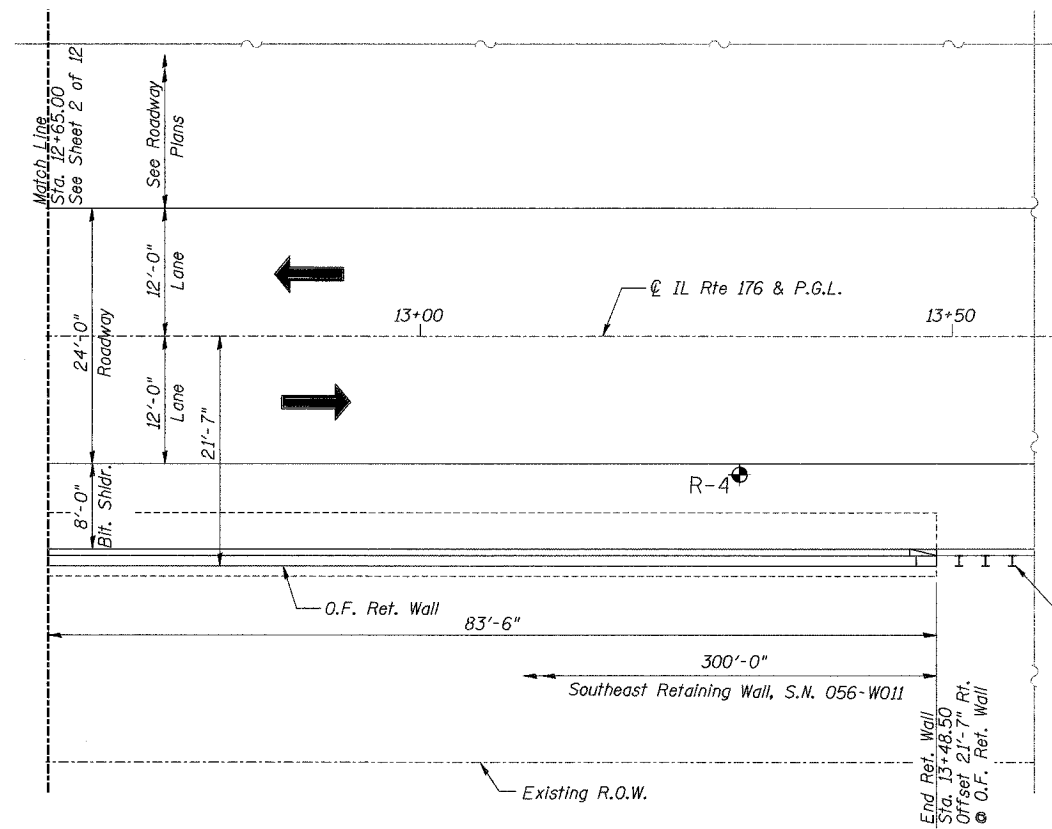
SHEET NO. 3 OF 12 SHEETS

Contract #62336

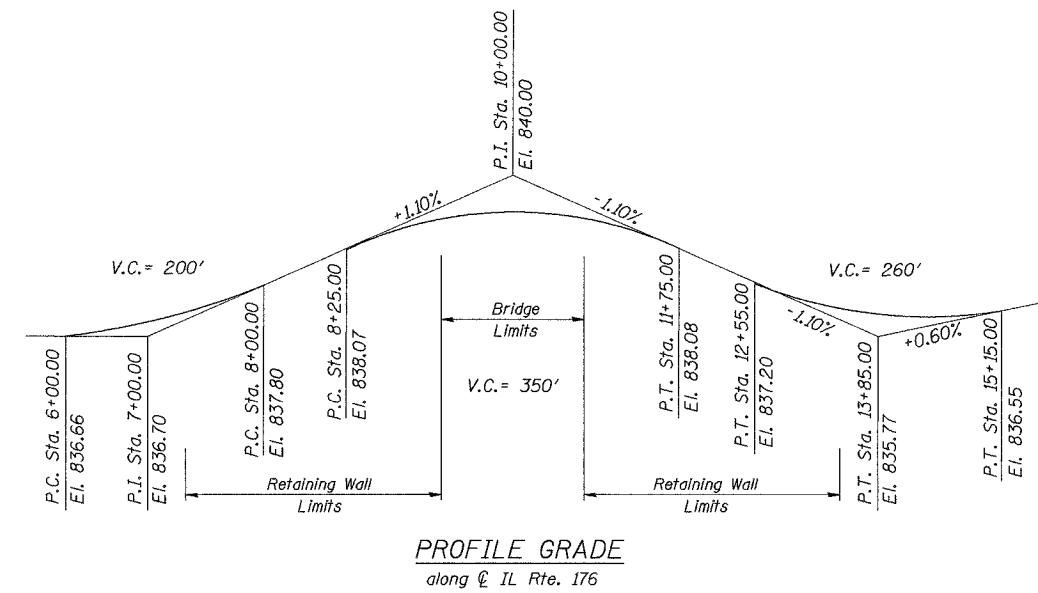
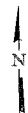


LEGEND

R-4 - Soil Boring



PLAN



PROFILE GRADE
along CL IL Rte. 176

Notes:

1. E.J. = Expansion Joint

GENERAL PLAN & ELEVATION III
RETAINING WALLS
IL Route 176 over the Kishwaukee River
F.A.P. RTE 533, SECTION 119R-2B
McHENRY COUNTY
STA. 7+71.50 TO STA. 13+48.50
DATE: 10-05-07
GRAEF, ANHALT, SCHLOEMER & ASSOCIATES INC
CHICAGO ILLINOIS

DESIGNED	S.D.H.
CHECKED	J.A.Z.
DRAWN	M.S.M.
CHECKED	S.D.H.