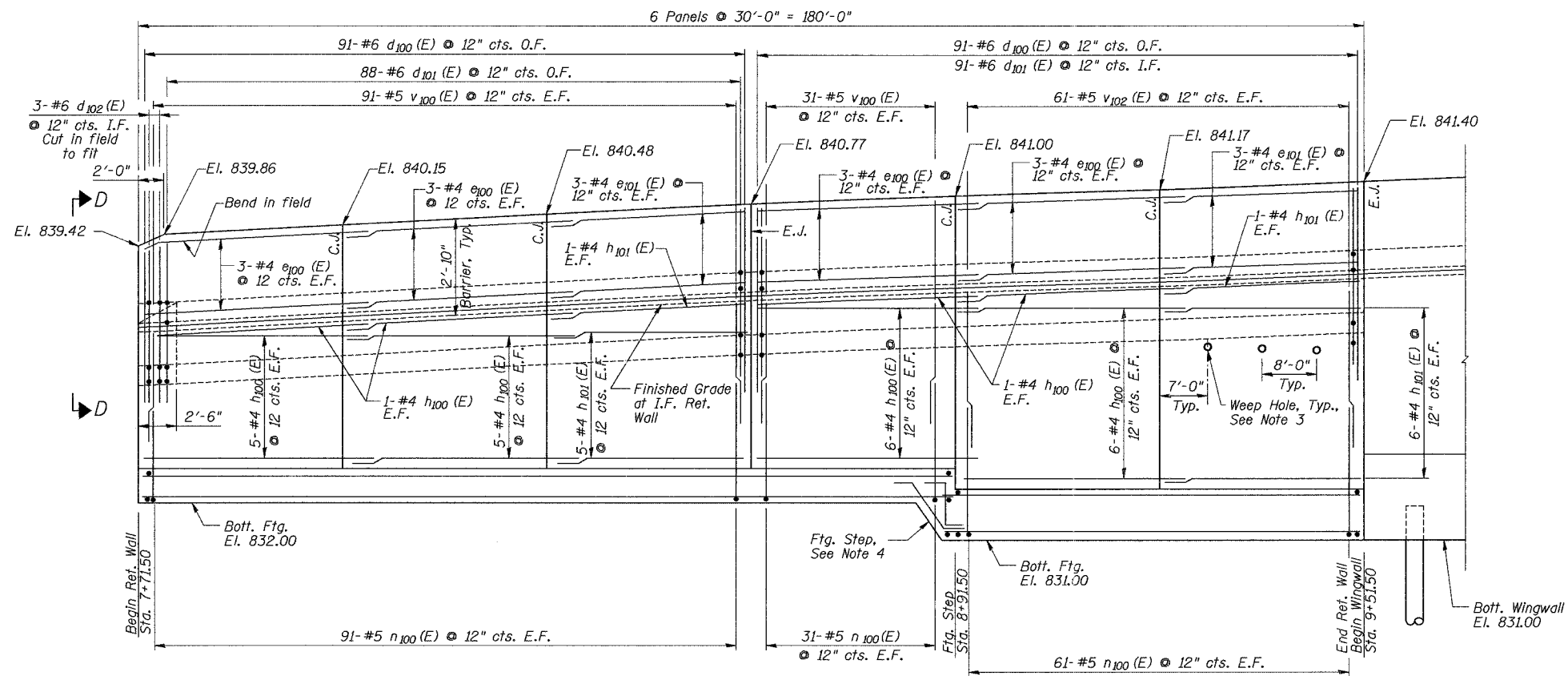


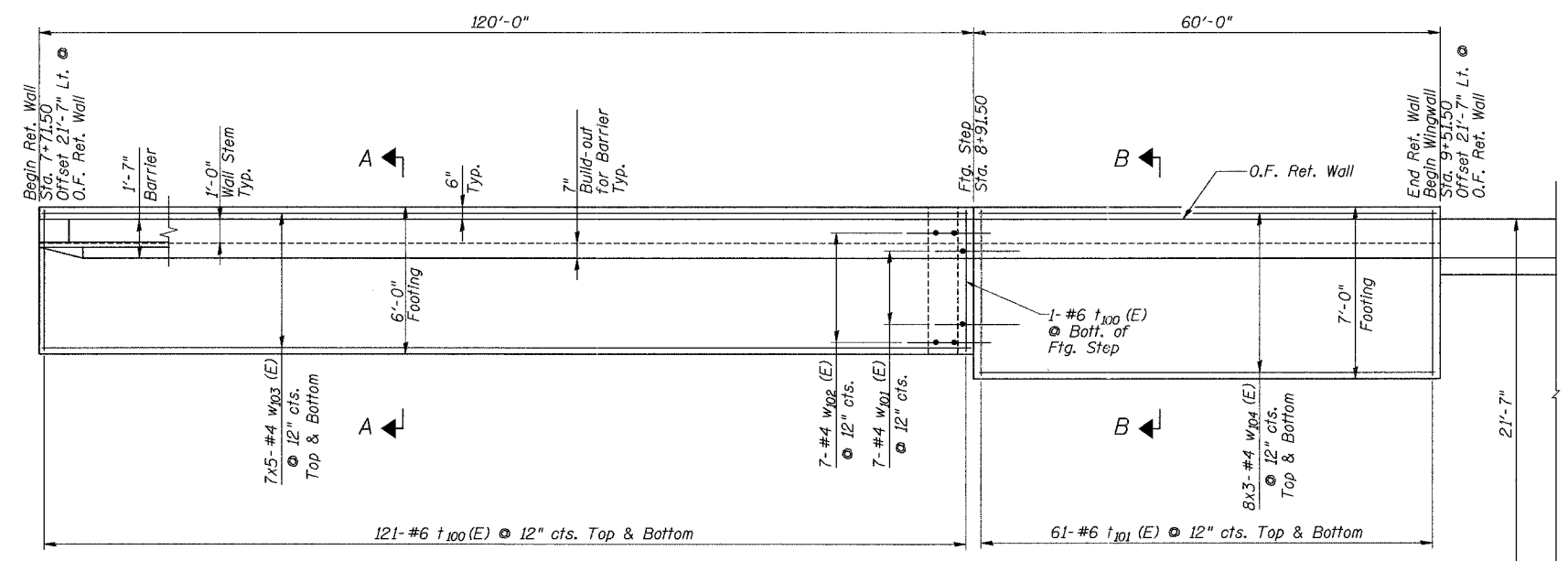
|                 |         |          |              |                   |
|-----------------|---------|----------|--------------|-------------------|
| ROUTE NO.       | SECTION | COUNTY   | TOTAL SHEETS | SHEET NO.         |
| 533             | 119R-2B | McHenry  | 64           | 39                |
| FED. ROAD DIST. |         | ILLINOIS |              | FED. AID PROJECT- |

Contract #62336

SHEET NO. 4 OF 12 SHEETS



NORTHWEST RETAINING WALL REFLECTED ELEVATION  
(Outside Face Elevation)



NORTHWEST RETAINING WALL PLAN

Notes:

- E.J. = Expansion Joint  
C.J. = Construction Joint  
For Joint Details, see Sheet 8 of 12.
- For Sections A-A & B-B and View D-D, see Sheet 8 of 12.
- Place Weep Hole so that bottom of hole is 1'-0" above Finished Grade at the O.F. Ret. Wall. Place in Wall Panel adjacent to Wingwall only.
- For Footing Step Detail, see Sheet 8 of 12.
- Bars indicated thus 8x3-#4 etc. indicates 8 lines of bars with 3 lengths per line.
- Minimum lap lengths:  
#4 = 1'-8"  
#4 = 2'-5" (top bars)  
#5 = 2'-2"  
#6 = 2'-7"

|          |        |
|----------|--------|
| DESIGNED | S.D.H. |
| CHECKED  | J.A.Z. |
| DRAWN    | M.S.M. |
| CHECKED  | S.D.H. |

NORTHWEST RETAINING WALL  
S.N. 056-W013  
PLAN AND ELEVATION  
IL Route 176 over the Kishwaukee River  
F.A.P. RTE 533, SECTION 119R-2B  
McHENRY COUNTY  
STA. 7+71.50 TO STA. 13+48.50  
DATE: 10-05-07  
GRAEF, ANHALT, SCHLOEMER & ASSOCIATES INC  
CHICAGO ILLINOIS

n:\p052005\sheet\where work\refinal\RetWall\056-005-S-4.dgn  
 10/3/07 10:03:50 AM

V:\P052005\056-005-S-4.dgn 10/3/2007 10:03:50 AM