

F.A. RTE.	SECTION	COUNTY	TOTAL SHEETS	SHEET NO.
VAR.	2004-127 I	*	11	1

* COOK, DU PAGE, LAKE AND WILL

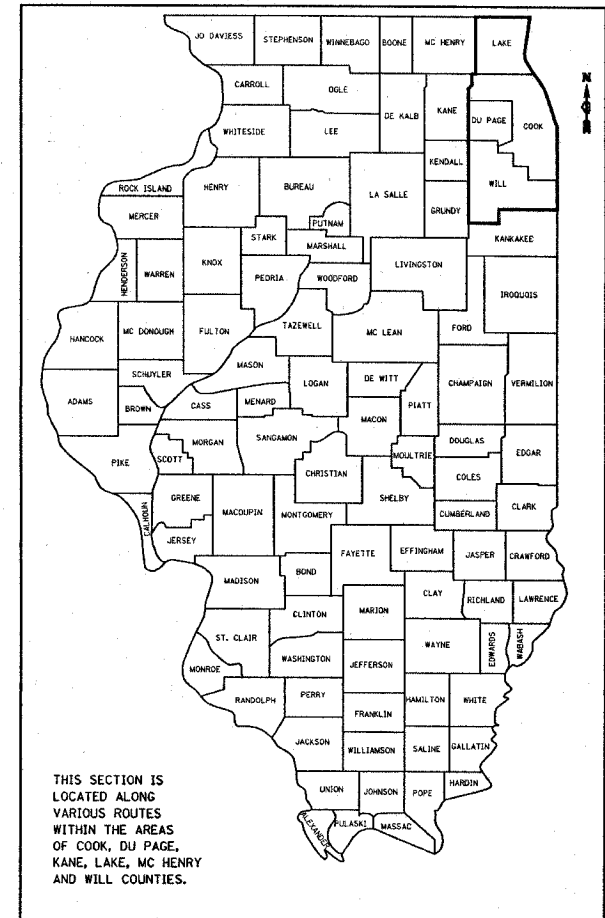
D-91-089-05

STATE OF ILLINOIS
DEPARTMENT OF TRANSPORTATION
DIVISION OF HIGHWAYS

**PROPOSED
HIGHWAY PLANS**

ROUTE: VARIOUS DISTRICT ONE
SECTION: 2004-127I

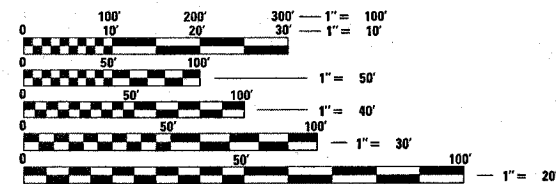
COUNTY: VARIOUS (COOK, DUPAGE, LAKE AND WILL)
EXPRESSWAY HIGHWAY CLEANING (SWEEPING)
C-91-089-05



THIS SECTION IS LOCATED ALONG VARIOUS ROUTES WITHIN THE AREAS OF COOK, DU PAGE, KANE, LAKE, MC HENRY AND WILL COUNTIES.

FOR INDEX OF SHEETS, SEE SHEET NO. 2

3 LOCATION MAPS - SEE INDEX OF SHEETS



FULL SIZE PLANS HAVE BEEN PREPARED USING STANDARD ENGINEERING SCALES. REDUCED SIZED PLANS WILL NOT CONFORM TO STANDARD SCALES. IN MAKING MEASUREMENTS ON REDUCED PLANS, THE ABOVE SCALES MAY BE USED.

J.U.L.I.E.
JOINT UTILITY LOCATION INFORMATION FOR EXCAVATION
1-800-892-0123

CONTRACT NO. 62894

STATE OF ILLINOIS
DEPARTMENT OF TRANSPORTATION
DIVISION OF HIGHWAYS

SUBMITTED Dec. 17 20 07

Diane O'Keefe
DEPUTY DIRECTOR OF HIGHWAYS, REGION ENGINEER

December 7, 20 07
Eric E. Hara
ENGINEER OF DESIGN AND ENVIRONMENT

December 7, 20 07
Christine M. Reed
DIRECTOR OF HIGHWAYS, CHIEF ENGINEER

**PRINTED BY THE AUTHORITY
OF THE STATE OF ILLINOIS**

DISTRICT ONE / BUREAU OF DESIGN
PLAN PREPARATION ENGINEER: K. ENG / R. BORO (847) 705-4178