

F.A. DIST.	SECTION	COUNTY	TOTAL SHEETS	SHEET NO.
VAR.	2004-1271	*	11	9
STA.	TO STA.			
FED. ROAD DIST. NO. 7	ILLINOIS	FED. AID PROJECT		

\* COOK, DuPAGE, LAKE and WILL

**NOTES:**

PROTECTION VEHICLE NUMBER 2 SHALL BE PLACED IN ADVANCE OF HORIZONTAL OR VERTICAL CURVES TO PROVIDE ADVANCE WARNING FOR WORK OPERATIONS HIDDEN BY CURVES.

TMA MAY BE USED ON WORK VEHICLE.

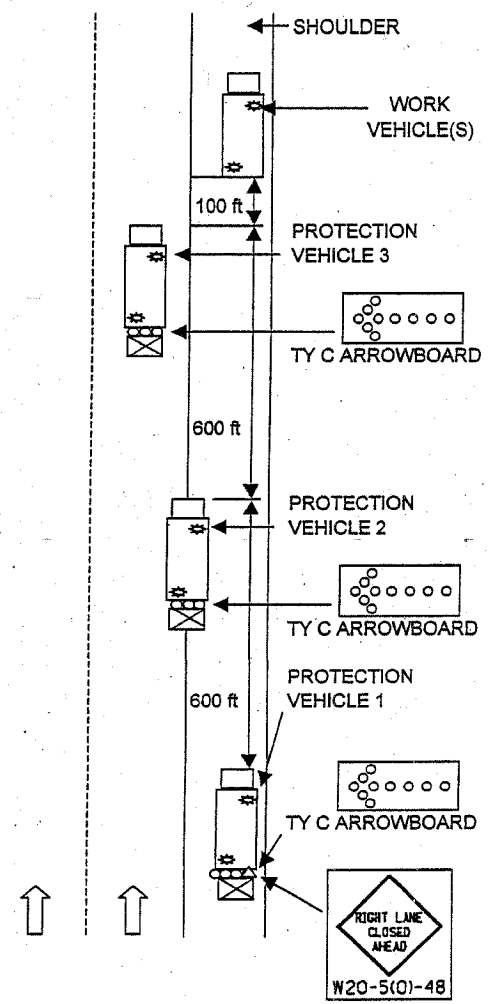
VEHICLES USED SHALL BE MADE HIGHLY VISIBLE WITH APPROPRIATE EQUIPMENT SUCH AS FLASHING LIGHTS, ROTATING BEACONS, FLAGS, SIGNS, OR ARROW DISPLAYS.

ALL PROTECTION VEHICLES SHALL HAVE ARROW DISPLAYS, AND TRUCK MOUNTED ATTENUATORS.

DETAIL MAY BE USED FOR WORK IN LEFT OR RIGHT LANE.

DURING SIGN CLEANING OPERATIONS WHEN WORKERS(VEHICLES) DO NOT ENCROACH INTO TRAVEL LANES, PROTECTION VEHICLES SHALL REMAIN ON THE SHOULDER.

- KEY :**
- △ SIGN- W20-5(0)-48  
LEFT OR RIGHT LANE CLOSED AHEAD
  - ∞ ARROWBOARD (TYPE C)
  - ⊛ VEHICLE SAFETY LIGHT
  - ↑ DIRECTION OF TRAFFIC
  - ⊠ TRUCK MOUNTED ATTENUATOR (TMA)



REVISIONS	
NAME	DATE

ILLINOIS DEPARTMENT OF TRANSPORTATION  
 DISTRICT ONE DETAILS:  
 TYPICAL APPLICATION OF  
 TRAFFIC CONTROL DEVICES  
 HIGHWAY AND SIGN CLEANING  
 OPERATIONS-NIGHT TIME ONLY

SCALE: VERT. \_\_\_\_\_  
 HORIZ. \_\_\_\_\_

DATE \_\_\_\_\_

DRAWN BY \_\_\_\_\_  
 DESIGNED BY \_\_\_\_\_  
 CHECKED BY \_\_\_\_\_