

SUMMARY OF QUANTITIES			CONSTRUCTION TYPE CODE					
CODE NO	ITEM	UNIT	TOTAL QUANTITIES	ROADWAY 1000-2A	SIGNAL Y031-1F			
* X0325890	REOPTIMIZE TRAFFIC SIGNAL SYSTEM LEVEL I	EACH	1		1			
X0325737	TEMPORARY TRAFFIC SIGNAL TIMING	EACH	1		1			
20100110	TREE REMOVAL (6 TO 15 UNITS DIAMETER)	UNIT	25	25				
20100410	TREE REMOVAL, SPECIAL (OVER 15 UNITS DIAMETER)	UNIT	44	44				
20101100	TREE TRUNK PROTECTION	EACH	7	7				
20200100	EARTH EXCAVATION	CU YD	3718	3718				
* 20200200	ROCK EXCAVATION	CU YD	450	450				
20201006	GRADING AND SHAPING SHOULDERS	UNIT	24	24				
20201200	REMOVAL AND DISPOSAL OF UNSUITABLE MATERIAL	CU YD	3016	3016				
20700420	POROUS GRANULAR EMBANKMENT, SUBGRADE	CU YD	120	120				
20800150	TRENCH BACKFILL	CU YD	1450	1450				
21101615	TOPSOIL FURNISH AND PLACE, 4"	SQ YD	8396	8396				
25000210	SEEDING, CLASS 2A	ACRE	2	2				
25000400	NITROGEN FERTILIZER NUTRIENT	POUND	180	180				
25000500	PHOSPHORUS FERTILIZER NUTRIENT	POUND	180	180				
25000600	POTASSIUM FERTILIZER NUTRIENT	POUND	180	180				
25100630	EROSION CONTROL BLANKET	SQ YD	8396	8396				
25200200	SUPPLEMENTAL WATERING	UNIT	84	84				
28000250	TEMPORARY EROSION CONTROL SEEDING	POUND	180	180				
28000300	TEMPORARY DITCH CHECKS	EACH	20	20				
28000400	PERIMETER EROSION BARRIER	FOOT	4500	4500				
28000510	INLET FILTERS	EACH	26	26				
28100105	STONE RIPRAP, CLASS A3	SQ YD	712	712				
28200200	FILTER FABRIC	SQ YD	712	712				
31101200	SUB-BASE GRANULAR MATERIAL, TYPE B 4"	SQ YD	2200	2200				
31102100	SUB-BASE GRANULAR MATERIAL, TYPE C 4"	SQ YD	715	715				
35300500	PORTLAND CEMENT CONCRETE BASE COURSE 10"	SQ YD	3600	3600				
35501308	HOT-MIX ASPHALT BASE COURSE, 6"	SQ YD	270	270				
35501316	HOT-MIX ASPHALT BASE COURSE, 8"	SQ YD	285	285				

\* SPECIALTY ITEMS

SUMMARY OF QUANTITIES			CONSTRUCTION TYPE CODE					
CODE NO	ITEM	UNIT	TOTAL QUANTITIES	ROADWAY 1000-2A	SIGNAL Y031-1F			
40300200	BITUMINOUS MATERIALS (PRIME COAT)	TON	7	7				
40600300	AGGREGATE (PRIME COAT)	TON	33	33				
40600400	MIXTURE FOR CRACKS, JOINTS, AND FLANGWAYS	TON	5	5				
40600635	LEVELING BINDER (MACHINE METHOD), N70	TON	1005	1005				
40600895	CONSTRUCTING TEST STRIP	EACH	1	1				
40600982	HOT-MIX ASPHALT SURFACE REMOVAL - BUTT JOINT	SQ YD	84	84				
40601005	HOT-MIX ASPHALT REPLACEMENT OVER PATCHES	TON	180	180				
40603310	HOT-MIX ASPHALT SURFACE COURSE, MIX "C", N50	TON	63	63				
40603595	POLYMERIZED HOT-MIX ASPHALT SURFACE COURSE, MIX "F", N90	TON	1848	1848				
42001300	PROTECTIVE COAT	SQ YD	4406	4406				
42400200	PORTLAND CEMENT CONCRETE SIDEWALK 5 INCH	SQ FT	4345	4345				
42400800	DETECTABLE WARNINGS	SQ FT	54	54				
44000153	HOT-MIX ASPHALT SURFACE REMOVAL, 1"	SQ YD	10700	10700				
44000200	DRIVEWAY PAVEMENT REMOVAL	SQ YD	530	530				
44000500	COMBINATION CURB AND GUTTER REMOVAL	FOOT	3005	3005				
44000600	SIDEWALK REMOVAL	SQ FT	5275	5275				
44002212	HOT-MIX ASPHALT REMOVAL OVER PATCHES, 3"	SQ YD	400	400				
44003100	MEDIAN REMOVAL	SQ FT	7770	7770				
44004250	PAVED SHOULDER REMOVAL	SQ YD	1305	1305				
44201353	CLASS C PATCHES, TYPE II, 10 INCH	SQ YD	200	200				
44201765	CLASS D PATCHES, TYPE II, 10 INCH	SQ YD	200	200				
44201357	CLASS C PATCHES, TYPE III, 10 INCH	SQ YD	70	70				
44201769	CLASS D PATCHES, TYPE III, 10 INCH	SQ YD	70	70				
44201359	CLASS C PATCHES, TYPE IV, 10 INCH	SQ YD	70	70				
44201771	CLASS D PATCHES, TYPE IV, 10 INCH	SQ YD	70	70				
44300200	STRIP REFLECTIVE CRACK CONTROL TREATMENT	FOOT	10700	10700				
48101500	AGGREGATE SHOULDERS, TYPE B 6"	SQ YD	714	714				
48203029	HOT-MIX ASPHALT SHOULDERS, 8"	SQ YD	1098	1098				
54213660	PRECAST REINFORCED CONCRETE FLARED END SECTIONS 15"	EACH	2	2				
54213663	PRECAST REINFORCED CONCRETE FLARED END SECTIONS 18"	EACH	2	2				

REVISIONS	
NAME	DATE

ILLINOIS DEPARTMENT OF TRANSPORTATION  
SUMMARY OF QUANTITIES

Rev. 1-7-08

SUMMARY OF QUANTITIES			CONSTRUCTION TYPE CODE				
CODE NO	ITEM	UNIT	TOTAL QUANTITIES	ROADWAY 1000-2A	SIGNAL Y031-1F		
542A0220	PIPE CULVERTS, CLASS A, TYPE 1 15"	FOOT	50	50			
NP 55039700	STORM SEWERS TO BE CLEANED	FOOT	750	750			
55021600	STORM SEWERS, TYPE 2, REINFORCED CONCRETE CULVERT, STORM DRAIN, AND SEWER PIPE, CLASS III 12"	FOOT	282	282			
55021700	STORM SEWERS, TYPE 2, REINFORCED CONCRETE CULVERT, STORM DRAIN, AND SEWER PIPE, CLASS III 15"	FOOT	490	490			
55021800	STORM SEWERS, TYPE 2, REINFORCED CONCRETE CULVERT, STORM DRAIN, AND SEWER PIPE, CLASS III 18"	FOOT	872	872			
60107600	PIPE UNDERDRAINS 4"	FOOT	500	500			
60201340	CATCH BASINS, TYPE A, 4'-DIAMETER, TYPE 24 FRAME AND GRATE	EACH	7	7			△
60218400	MANHOLES, TYPE A, 4'-DIAMETER, TYPE 1 FRAME, CLOSED LID	EACH	4	4			△
60219000	MANHOLES, TYPE A, 4'-DIAMETER, TYPE B GRATE	EACH	2	2			
60219540	MANHOLES, TYPE A, 4'-DIAMETER, TYPE 24 FRAME AND GRATE	EACH	4	4			△
60240301	INLETS, TYPE B, TYPE 8 GRATE	EACH	3	3			
60240328	INLETS, TYPE B, TYPE 24 FRAME AND GRATE	EACH	5	5			△
60250200	CATCH BASINS TO BE ADJUSTED	EACH	6	6			
60255500	MANHOLES TO BE ADJUSTED	EACH	3	3			
60500050	REMOVING CATCH BASINS	EACH	4	4			
60600095	CLASS SI CONCRETE (OUTLET)	CU YD	5	5			
60600105	CONCRETE CURB	FOOT	83	83			
60605000	COMBINATION CONCRETE CURB AND GUTTER, TYPE B-6.24	FOOT	3548	3548			
60623711	CONCRETE MEDIAN	SQ FT	380	380			
60624600	CORRUGATED MEDIAN	SQ FT	110	110			
* 63000000	STEEL PLATE BEAM GUARD RAIL, TYPE A	FOOT	75	75			
* 63100045	TRAFFIC BARRIER TERMINAL, TYPE 2	EACH	2	2			
63200310	GUARDRAIL REMOVAL	FOOT	75	75			
67000400	ENGINEER'S FIELD OFFICE, TYPE A	CAL MO	8	8			
67100100	MOBILIZATION	L SUM	1	1			
70100310	TRAFFIC CONTROL AND PROTECTION, STANDARD 701421	L SUM	1	1			
70100500	TRAFFIC CONTROL AND PROTECTION, STANDARD 701326	L SUM	1	1			
70102625	TRAFFIC CONTROL AND PROTECTION, STANDARD 701606	L SUM	1	1			
70102635	TRAFFIC CONTROL AND PROTECTION, STANDARD 701701	L SUM	1	1			

SUMMARY OF QUANTITIES			CONSTRUCTION TYPE CODE				
CODE NO	ITEM	UNIT	TOTAL QUANTITIES	ROADWAY 1000-2A	SIGNAL Y031-1F		
70102640	TRAFFIC CONTROL AND PROTECTION, STANDARD 701801	L SUM	1	1			
<del>70103815</del>	<del>TRAFFIC CONTROL SURVEILLANCE</del>	<del>CAL OR</del>	<del>5</del>	<del>5</del>			△
70300100	SHORT-TERM PAVEMENT MARKING	FOOT	5370	5370			
70300210	TEMPORARY PAVEMENT MARKING - LETTERS AND SYMBOLS	SQ FT	150	150			
70300220	TEMPORARY PAVEMENT MARKING - LINE 4"	FOOT	11200	11200			
70300240	TEMPORARY PAVEMENT MARKING - LINE 6"	FOOT	1020	1020			
70300260	TEMPORARY PAVEMENT MARKING - LINE 12"	FOOT	550	550			
70300280	TEMPORARY PAVEMENT MARKING - LINE 24"	FOOT	150	150			
70301000	WORK ZONE PAVEMENT MARKING REMOVAL	SQ FT	7040	7040			
* 72000200	SIGN PANEL - TYPE 2	SQ FT	52		52		
* 78000100	THERMOPLASTIC PAVEMENT MARKING - LETTERS AND SYMBOLS	SQ FT	150	150			
* 78000200	THERMOPLASTIC PAVEMENT MARKING - LINE 4"	FOOT	11200	11200			
* 78000400	THERMOPLASTIC PAVEMENT MARKING - LINE 6"	FOOT	1020	1020			
* 78000600	THERMOPLASTIC PAVEMENT MARKING - LINE 12"	FOOT	550	550			
* 78000650	THERMOPLASTIC PAVEMENT MARKING - LINE 24"	FOOT	150	150			
* 78100100	RAISED REFLECTIVE PAVEMENT MARKER	EACH	190	190			
* 78201000	TERMINAL MARKER - DIRECT APPLIED	EACH	2	2			
78300200	RAISED REFLECTIVE PAVEMENT MARKER REMOVAL	EACH	150	150			
81000300	CONDUIT IN TRENCH, 1" DIA., GALVANIZED STEEL	FOOT	105		105		
81000600	CONDUIT IN TRENCH, 2" DIA., GALVANIZED STEEL	FOOT	765		765		
81000700	CONDUIT IN TRENCH, 2 1/2" DIA., GALVANIZED STEEL	FOOT	130		130		
81001000	CONDUIT IN TRENCH, 4" DIA., GALVANIZED STEEL	FOOT	10		10		
81018500	CONDUIT PUSHED, 2" DIA., GALVANIZED STEEL	FOOT	316		316		
81018900	CONDUIT PUSHED, 4" DIA., GALVANIZED STEEL	FOOT	385		385		

\* SPECIALTY ITEMS  
NP = NON-PARTICIPATING

REVISIONS	
NAME	DATE

ILLINOIS DEPARTMENT OF TRANSPORTATION  
SUMMARY OF QUANTITIES

Rev. 1-7-08

Rev.

PLOT DATE: 10/31/2007

10/31/2007

SUMMARY OF QUANTITIES			CONSTRUCTION TYPE CODE				
CODE NO	ITEM	UNIT	TOTAL QUANTITIES	ROADWAY 1000-2A	SIGNAL Y031-1F		
			90% FED. / 10% STATE				
81030100	CONDUIT SPLICE	EACH	1		1		
81400100	HANDHOLE	EACH	5		5		
81400200	HEAVY-DUTY HANDHOLE	EACH	6		6		
81400300	DOUBLE HANDHOLE	EACH	1		1		
81900200	TRENCH AND BACKFILL FOR ELECTRICAL WORK	FOOT	900		900		
85000200	MAINTENANCE OF EXISTING TRAFFIC SIGNAL INSTALLATION	EACH	2		2		
85700305	FULL-ACTUATED CONTROLLER AND TYPE V CABINET, SPECIAL	EACH	1		1		
86000105	MASTER CONTROLLER (SPECIAL)	EACH	1		1		
87301215	ELECTRIC CABLE IN CONDUIT, SIGNAL NO. 14 2C	FOOT	1308		1308		
87301225	ELECTRIC CABLE IN CONDUIT, SIGNAL NO. 14 3C	FOOT	1380		1380		
87301245	ELECTRIC CABLE IN CONDUIT, SIGNAL NO. 14 5C	FOOT	1088		1088		
87301255	ELECTRIC CABLE IN CONDUIT, SIGNAL NO. 14 7C	FOOT	1542		1542		
87301305	ELECTRIC CABLE IN CONDUIT, LEAD-IN, NO. 14 1 PAIR	FOOT	2141		2141		
87301805	ELECTRIC CABLE IN CONDUIT, SERVICE, NO. 6 2 C	FOOT	119		119		
87502480	TRAFFIC SIGNAL POST, GALVANIZED STEEL 14 FT.	EACH	2		2		
87502500	TRAFFIC SIGNAL POST, GALVANIZED STEEL 16 FT.	EACH	2		2		
87700160	STEEL MAST ARM ASSEMBLY AND POLE, 24 FT.	EACH	2		2		
87700210	STEEL MAST ARM ASSEMBLY AND POLE, 34 FT.	EACH	1		1		
87700220	STEEL MAST ARM ASSEMBLY AND POLE, 36 FT.	EACH	1		1		
87800100	CONCRETE FOUNDATION, TYPE A	FOOT	20		20		
87800200	CONCRETE FOUNDATION, TYPE D	FOOT	4		4		
87800400	CONCRETE FOUNDATION, TYPE E 30-INCH DIAMETER	FOOT	60		60		
88030020	SIGNAL HEAD, LED, 1-FACE, 3-SECTION, MAST-ARM MOUNTED	EACH	4		4		

SUMMARY OF QUANTITIES			CONSTRUCTION TYPE CODE				
CODE NO	ITEM	UNIT	TOTAL QUANTITIES	ROADWAY 1000-2A	SIGNAL Y031-1F		
			90% FED. / 10% STATE				
88030100	SIGNAL HEAD, LED, 1-FACE, 5-SECTION, BRACKET MOUNTED	EACH	4		4		
88030110	SIGNAL HEAD, LED, 1-FACE, 5-SECTION, MAST-ARM MOUNTED	EACH	4		4		
88102710	PEDESTRIAN SIGNAL HEAD, LED, 1-FACE, BRACKET MOUNTED	EACH	8		8		
88200210	TRAFFIC SIGNAL BACKPLATE, LOUVERED, ALUMINUM	EACH	8		8		
88500100	INDUCTIVE LOOP DETECTOR	EACH	9		9		
88600100	DETECTOR LOOP, TYPE I	FOOT	780		780		
88800100	PEDESTRIAN PUSH-BUTTON	EACH	8		8		
89000100	TEMPORARY TRAFFIC SIGNAL INSTALLATION	EACH	1		1		
89502350	REMOVE AND REINSTALL ELECTRIC CABLE FROM CONDUIT	FOOT	369		369		
89502375	REMOVE EXISTING TRAFFIC SIGNAL EQUIPMENT	EACH	1		1		
89502380	REMOVE EXISTING HANDHOLE	EACH	9		9		
89502385	REMOVE EXISTING CONCRETE FOUNDATION	EACH	8		8		
X0322033	STORM SEWER (WATER MAIN REQUIREMENTS) 12 INCH	FOOT	16	16			△
X0322256	TEMPORARY INFORMATION SIGNING	SQ FT	153	153			
X0322035	STORM SEWER (WATER MAIN REQUIREMENTS) 18 INCH	FOOT	658	658			△
X0322925	ELECTRIC CABLE IN CONDUIT, TRACER, NO. 14 1C	FOOT	1557		1557		
X0342600	MANHOLES, TYPE A 5'-DIAMETER, TYPE 1 FRAME, CLOSED LID, RESTRICTOR PLATE	EACH	1		1		△
X4021000	TEMPORARY ACCESS (PRIVATE ENTRANCE)	EACH	4	4			
X4022000	TEMPORARY ACCESS (COMMERCIAL ENTRANCE)	EACH	5	5			
X4067107	POLYMERIZED LEVELING BINDER (MACHINE METHOD)	TON	305	305			
X5013800	PIPE CULVERT REMOVAL 1L-4.75, N50	EACH	5	5			
X6020095	MANHOLES, TYPE A, 4' DIAMETER, TYPE 1 FRAME, CLOSED LID, RESTRICTOR PLATE	EACH	1	1			
X8050015	SERVICE INSTALLATION - POLE MOUNTED	EACH	1		1		
X8620020	UNINTERRUPTIBLE POWER SUPPLY	EACH	1		1		
X8710020	FIBER OPTIC CABLE IN CONDUIT, NO. 62.5/125, MM12F SM12F	FOOT	1650		1650		
X8730027	ELECTRIC CABLE IN CONDUIT, GROUNDING, NO. 6 1C	FOOT	599		599		
XX005656	INLET FILTER CLEANING	EACH	26	26			△
*XX006128	TRAFFIC BARRIER TERMINAL TYPE 1 (SPECIAL)	EACH	2	2			
Z0001050	AGGREGATE SUBGRADE 12"	SR YD	2370	2370			
Z0013798	CONSTRUCTION LAYOUT	L SUM	1	1			
Z0018500	DRAINAGE STRUCTURES TO BE CLEANED	EACH	14	14			

\* SPECIALTY ITEMS  
NP = NON-PARTICIPATING

REVISIONS	
NAME	DATE

ILLINOIS DEPARTMENT OF TRANSPORTATION  
SUMMARY OF QUANTITIES

Rev. 1-7-08

10/31/2007 10:00:00 AM

DRAINAGE STRUCTURES TABLE

NO.	ROUTE	STATION	OFFSET	STRUCTURE TYPE			DIA.	FRAME	TOP OF FRAME	INVERT(W)	INVERT(E)	INVERT(S)	INVERT(N)
				MH	CB	INL							
1	US 30	209+37	31.56' LT.		TA		4'	T 24	663.7		*	*	
2	US 30	211+15	31.43' LT.		TA		4'	T 24	665.7		*	*	
3	US 30	212+95	31.28' LT.		TA		4'	T 24	667.6		*	*	
4	US 30	215+56	32.28' LT.	TA			4'	T 24	670.3	664.9(W)	665.0(E)		
5	US 30	215+56	26.71' RT.	TA			4'	T 24	670.3	665.9(W)	666.1(E)		
6	US 30	216+48	32.16' LT.			TB		T 24	670.7	665.9(W)	666.0(E)		
7	US 30	216+48	26.23' RT.			TB		T 24	670.8	666.4(W)	666.5(E)		
8	US 30	217+18	32.24' LT.			TB		T 24	671.1	666.7(W)	666.9(E)		
9	US 30	217+18	26.26' RT.			TB		T 24	671.2	666.8(W)	666.9(E)		
10	US 30	218+63	28.61' LT.	TA			4'	T 24	671.8	667.3(W)			
11	US 30	218+63	24.34' RT.	TA			4'	T 24	671.7	667.3(W)			
12	C.G. AVE.	109+15	36.40' RT.			TB		T 8	666.7		663.0(S)	663.3(N)	
13	C.G. AVE.	111+30	34.60' RT.	TA			4'	T 8	667.7		663.9(S)	664.2(N)	
14	C.G. AVE.	112+50	36.19' RT.			TB		T 8	668.5		664.6(S)	664.8(N)	
15	C.G. AVE.	113+85	35.69' RT.			TB		T 24	669.6	665.9(W)	665.2(S)	665.4(N)	
15A	C.G. AVE.	113+85	25.67' RT.			TB		T 8	669.6		666.0(E)		
16	C.G. AVE.	114+40	34.98' RT.	TA			4'	T 8	669.7		665.6(S)	665.7(N)	
17	C.G. AVE.	115+60	26.97' RT.		TA		4'	T 24	669.7		664.4(S)	664.1(N)	
17A	C.G. AVE.	115+83	18.10' RT.	TA			4'	T 1	669.8		663.9(S)	663.7(N)	
18	C.G. AVE.	117+80	24.11' RT.		TA		4'	T 24	669.5	*			
18A	C.G. AVE.	117+87	18.15' RT.	TA			4'	T 1	669.6		*	661.9(S) 661.7(N)	
19	C.G. AVE.	120+00	25.85' RT.		TA		4'	T 24	669.3	*			
19A	C.G. AVE.	120+07	17.25' RT.	TA			4'	T 1	669.4		*	659.7(S) 659.5(N)	
20	C.G. AVE.	122+20	22.10' RT.		TA		4'	T 24	666.4	*			
20A	C.G. AVE.	122+25	12.15' RT.	TA			4'	T 1	666.5		*	657.5(S) 657.3(N)	
21	C.G. AVE.	123+45	12.15' RT.	TA			5'	T 1	661.1			656.2(S) 656.0(N)	

NOTES:

- \* 1. STRUCTURE INVERTS TO BE DETERMINED IN THE FIELD.
- 2. STRUCTURE NO. 21 IS A MANHOLE, TYPE A, WITH A RESTRICTOR PLATE
- 3. 4-INCH DIAMETER LONGITUDINAL PIPE UNDERDRAINS TO BE PLACED AT THE OUTSIDE EDGES OF PROPOSED WIDENING AREAS 30 INCHES BELOW THE PROPOSED PAVEMENT GRADE AT THE FOLLOWING LOCATIONS:

US 30 (NORTH WIDENING):  
 STA. 209+40 TO 210+40  
 STA. 215+56 TO 216+50

COTTAGE GROVE AVE. (WEST WIDENING):  
 STA. 109+10 TO 110+10  
 STA. 121+20 TO 122+20

COTTAGE GROVE AVE. (EAST WIDENING):  
 STA. 121+50 TO 122+20

PIPE TABLE

NO.	ROUTE	STATION - STATION	TYPE	DIA. (IN.)	LIN. FT.
1	US 30	209+37, 24' LT. - 209+37, 30' LT.	2	12	6
2	US 30	209+37, 32' LT. - 209+37, 43' LT.	2	12	11
3	US 30	211+15, 23' LT. - 211+15, 30' LT.	2	12	7
4	US 30	211+15, 32' LT. - 211+05, 41' LT.	2	12	12
5	US 30	212+95, 24' LT. - 212+95, 30' LT.	2	12	6
6	US 30	212+95, 32' LT. - 212+92, 38' LT.	2	12	7
7	US 30	215+56, 32' LT. - 216+48, 32' LT.	2	15	92
8	US 30	215+56, 27' RT. - 216+48, 26' RT.	2	15	92
9	US 30	216+48, 32' LT. - 217+18, 32' LT.	2	12	70
10	US 30	216+48, 26' RT. - 217+18, 26' RT.	2	15	70
11	US 30	217+18, 32' LT. - 218+63, 29' LT.	2	12	145
12	US 30	217+18, 26' RT. - 218+63, 24' RT.	2	15	145
13	C.G. AVE.	108+00, 42' RT. - 109+15, 36' RT.	2	18	115
** 14	C.G. AVE.	109+15, 36' RT. - 111+30, 35' RT.	2	18	215
15	C.G. AVE.	111+30, 35' RT. - 112+50, 36' RT.	2	18	120
16	C.G. AVE.	112+50, 36' RT. - 113+85, 36' RT.	2	18	135
17	C.G. AVE.	113+85, 26' RT. - 113+85, 36' RT.	2	12	10
18	C.G. AVE.	113+85, 36' RT. - 114+40, 35' RT.	2	18	55
19	SEC US 30 AT C.G. AVE.	(C.G. AVE.) 114+40, 35' RT. - (US 30) 215+56, 27' RT.	2	15	40
20	NEC US 30 AT C.G. AVE.	(C.G. AVE.) 115+60, 27' RT. - (US 30) 215+56, 32' LT.	2	15	51
20A	C.G. AVE.	115+60, 27' RT. - 115+83, 18' RT.	2	18	23
21	C.G. AVE.	115+83, 18' RT. - 117+87, 18' RT.	2	18	204
21A	C.G. AVE.	117+80, 24' RT. - 117+87, 18' RT.	2	12	8
22	C.G. AVE.	117+87, 18' RT. - 120+07, 17' RT.	2	18	220
** 22A	C.G. AVE.	120+00, 26' RT. - 120+07, 17' RT.	2	12	8
** 23	C.G. AVE.	120+07, 17' RT. - 122+25, 12' RT.	2	18	218
** 23A	C.G. AVE.	122+20, 22' RT. - 122+25, 12' RT.	2	12	10
** 24	C.G. AVE.	122+25, 12' RT. - 123+45, 12' RT.	2	18	120
** 25	C.G. AVE.	123+45, 12' RT. - 124+50, 34' RT.	2	18	105

\*\* USE STORM SEWER (WATER MAIN REQUIREMENTS), 12" AND 18"

PLOT DATE = 1/9/2008  
 FILE NAME = c:\p\projects\1010003\design\cd.dgn  
 PLOT SCALE = 80000 / 1" = 1" = 80000'  
 USER NAME = xlg@berndp

REVISIONS		ILLINOIS DEPARTMENT OF TRANSPORTATION
NAME	DATE	
		<p><b>US 30 AT COTTAGE GROVE AVE.          PROPOSED DRAINAGE TABLE</b></p> <p>SCALE: VERT. HORIZ.          DATE</p> <p>DRAWN BY          CHECKED BY</p>

Rev. 1-7-08

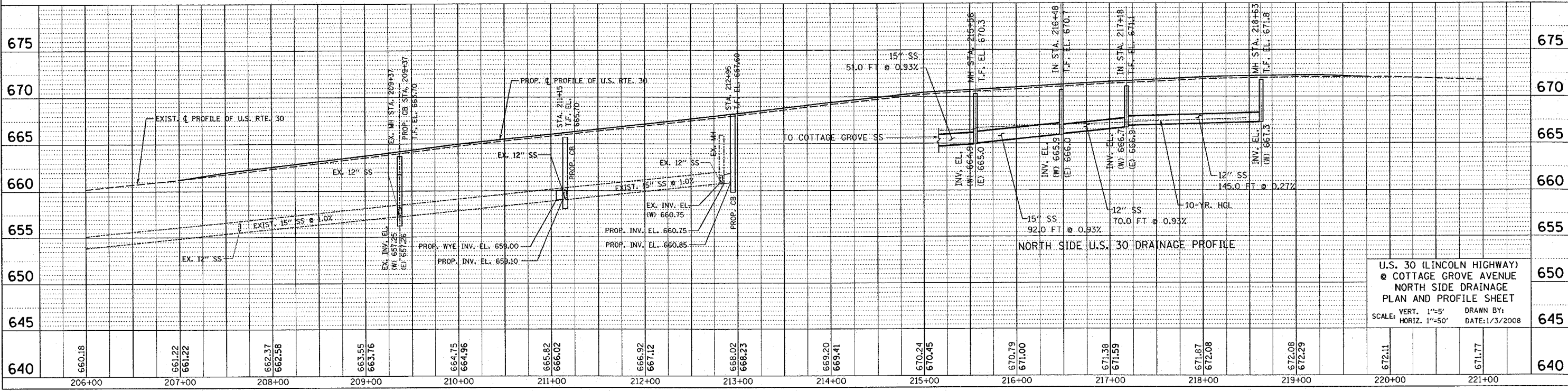
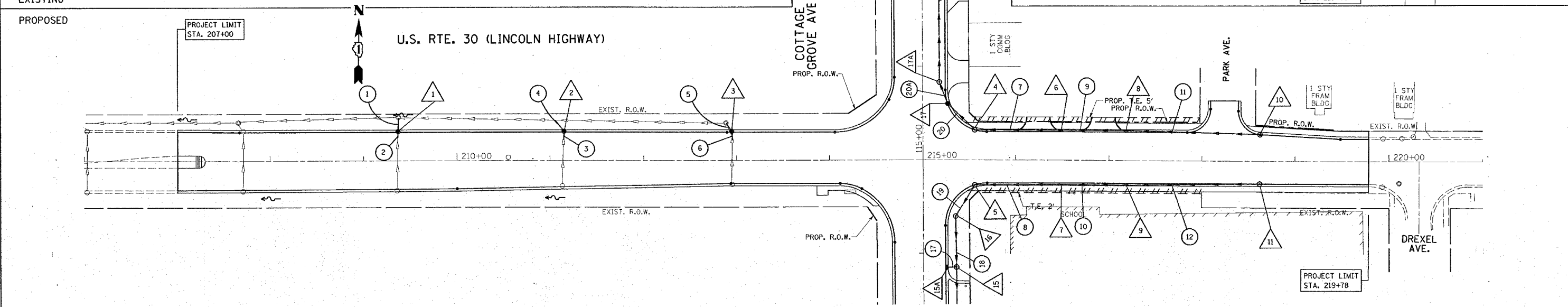
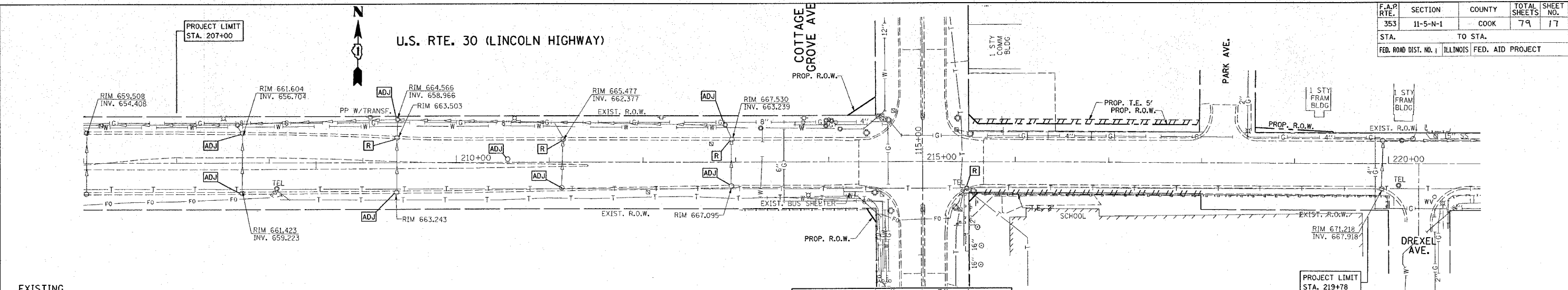
REV. 2

F.A.P. RTE.	SECTION	COUNTY	TOTAL SHEETS	SHEET NO.
353	11-5-N-1	COOK	79	17
STA. 207+00		TO STA. 219+78		
FED. ROAD DIST. NO. 1 ILLINOIS FED. AID PROJECT				

DATE	BY

DATE	BY

PLOT DATE = 1/3/2008  
 FILE NAME = c:\projects\p100\0003\ah-drain.dwg  
 PLOT SCALE = 50.0000 / IN.  
 USER NAME = drivdesign



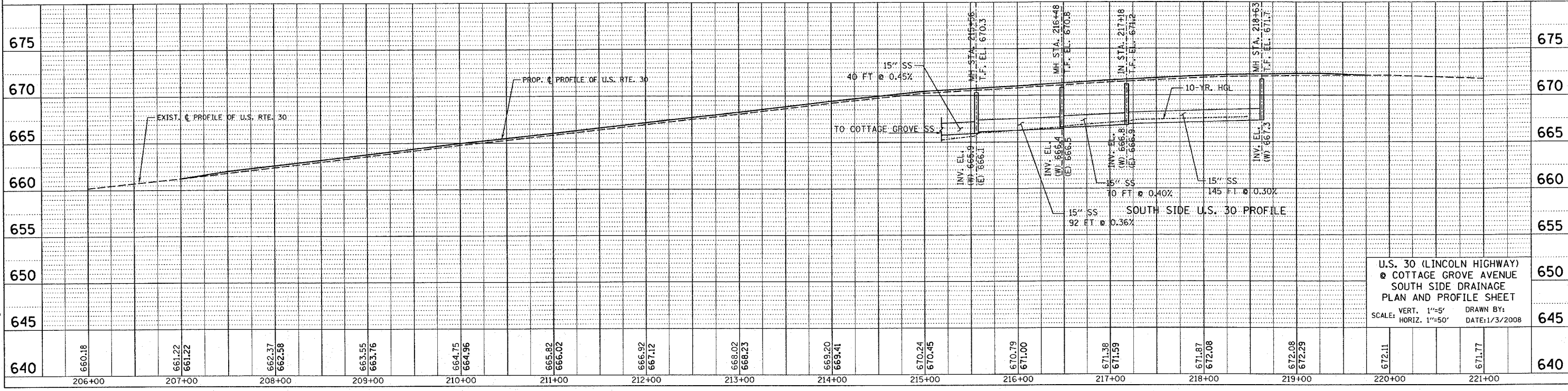
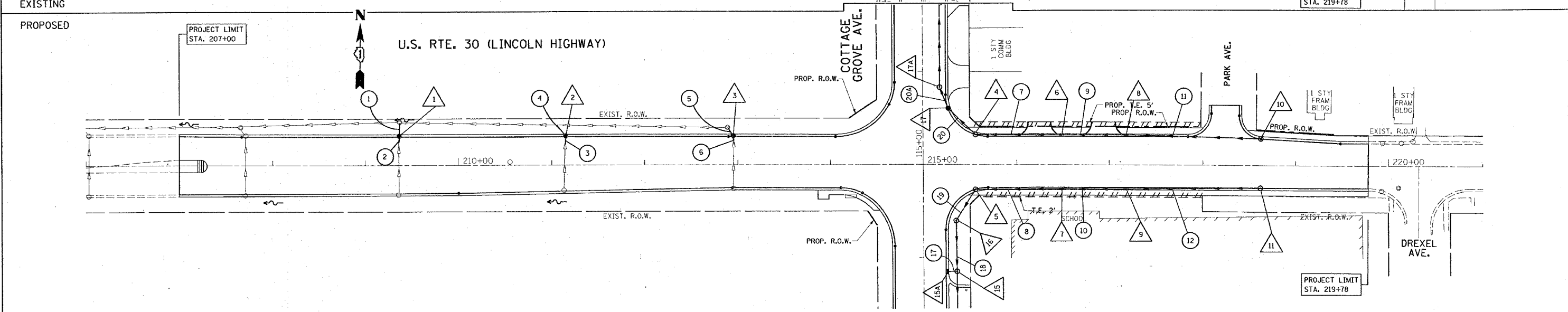
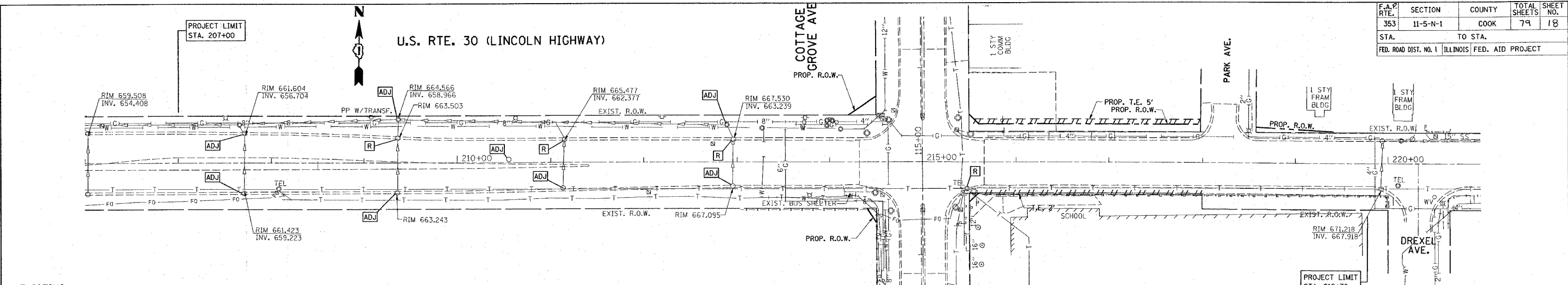
U.S. 30 (LINCOLN HIGHWAY)  
 & COTTAGE GROVE AVENUE  
 NORTH SIDE DRAINAGE  
 PLAN AND PROFILE SHEET  
 SCALE: VERT. 1"=5'    DRAWN BY:  
 HORIZ. 1"=50'    DATE: 1/3/2008

F.A.P. RTE.	SECTION	COUNTY	TOTAL SHEETS	SHEET NO.
353	11-5-N-1	COOK	79	18
STA. 207+00		TO STA. 219+78		
FED. ROAD DIST. NO. 1 ILLINOIS FED. AID PROJECT				

DATE	BY

DATE	BY

PLOT DATE = 1/2/2008  
 FILE NAME = c:\pco\pco\pco\010203\sh.drain.co.dgn  
 PLOT SCALE = 5/8"=1'-0" / 1"=1'-0"  
 USER NAME = drivelogon

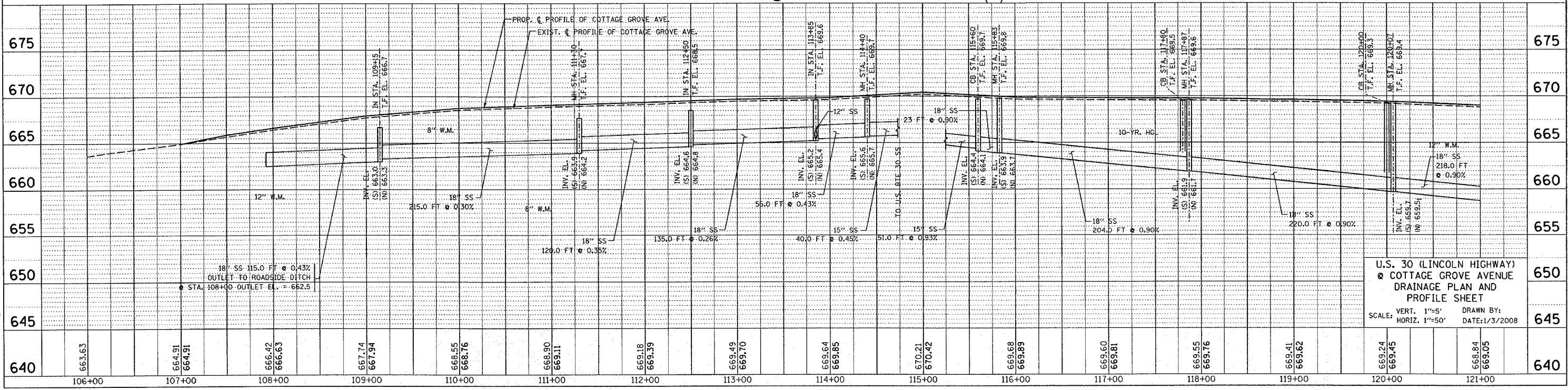
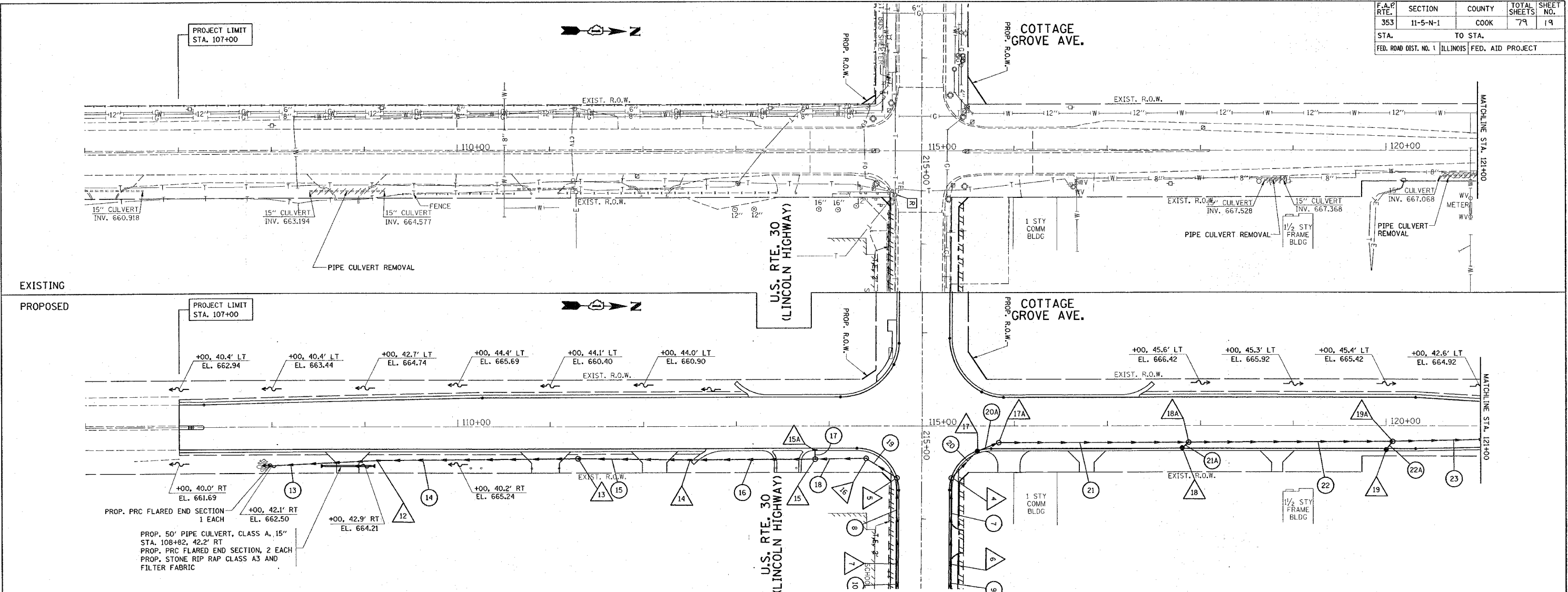


U.S. 30 (LINCOLN HIGHWAY)  
 COTTAGE GROVE AVENUE  
 SOUTH SIDE DRAINAGE  
 PLAN AND PROFILE SHEET  
 SCALE: VERT. 1"=5' HORIZ. 1"=50'  
 DRAWN BY: DATE: 1/3/2008

F.A.P. RTE.	SECTION	COUNTY	TOTAL SHEETS	SHEET NO.
353	11-5-N-1	COOK	79	19
STA. 107+00		TO STA. 121+00		
FED. ROAD DIST. NO. 1		ILLINOIS FED. AID PROJECT		

DATE	BY

DATE	BY



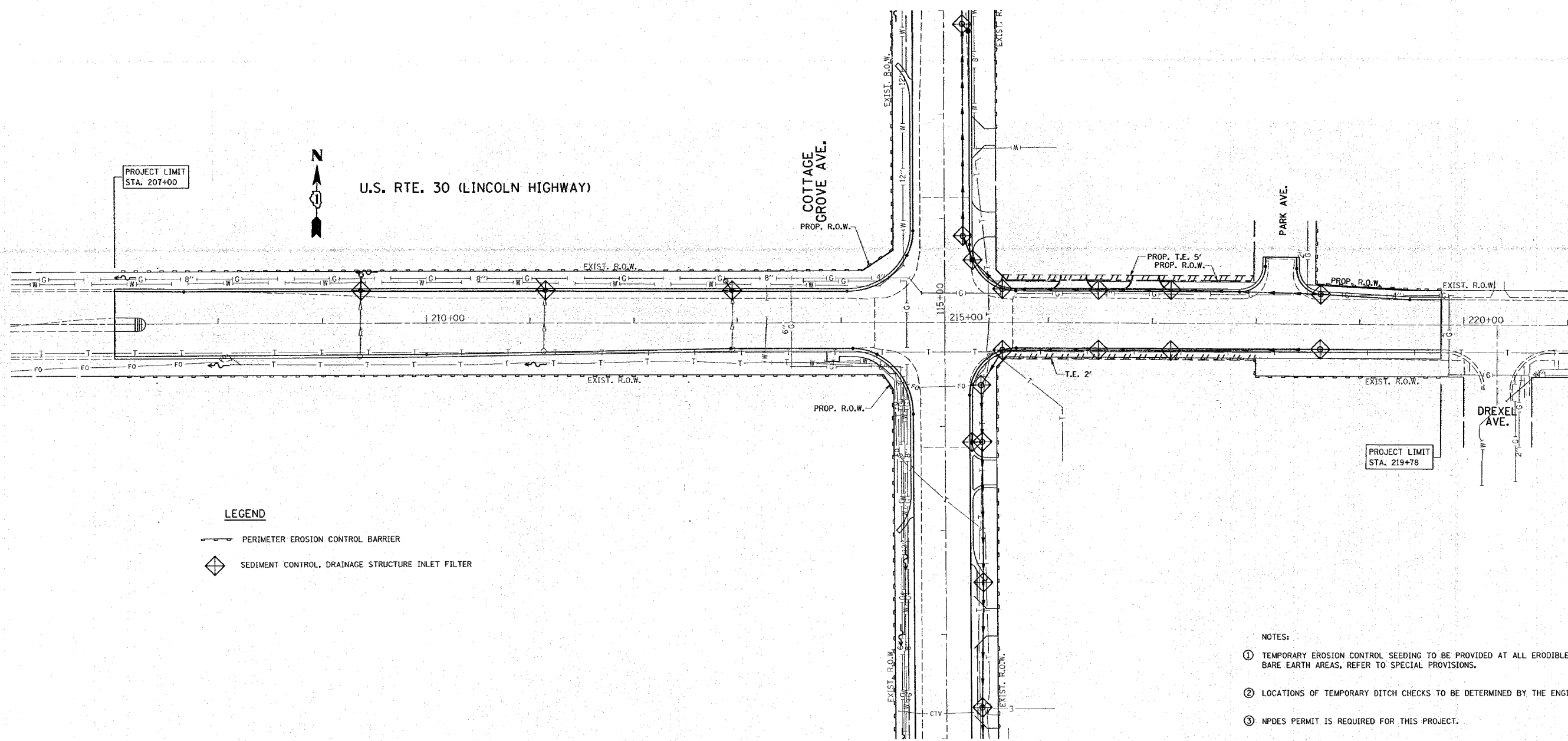
PLOT DATE = 1/23/2008  
 FILE NAME = c:\projects\p101003\ah.draun.dgn  
 PLOT SCALE = 8/8.0000 / IN.  
 USER NAME = drvs003

U.S. 30 (LINCOLN HIGHWAY)  
 & COTTAGE GROVE AVENUE  
 DRAINAGE PLAN AND  
 PROFILE SHEET  
 SCALE: VERT. 1"=5'  
 HORIZ. 1"=50' DRAWN BY:  
 DATE: 1/3/2008





F.A.P. RTE.	SECTION	COUNTY	TOTAL SHEETS	SHEET NO.
353	11-5-N-1	COOK	79	25
STA.		TO STA.		
FED. ROAD DIST. NO. 1		ILLINOIS FED. AID PROJECT		



**LEGEND**

	PERIMETER EROSION CONTROL BARRIER
	SEDIMENT CONTROL, DRAINAGE STRUCTURE INLET FILTER

- NOTES:
- ① TEMPORARY EROSION CONTROL SEEDING TO BE PROVIDED AT ALL ERODIBLE BARE EARTH AREAS, REFER TO SPECIAL PROVISIONS.
  - ② LOCATIONS OF TEMPORARY DITCH CHECKS TO BE DETERMINED BY THE ENGINEER.
  - ③ NPDES PERMIT IS REQUIRED FOR THIS PROJECT.
  - ④ ALL EROSION CONTROL MEASURES SHALL BE IN ACCORDANCE WITH THE REQUIREMENTS OF THE STANDARD SPECIFICATIONS AND OF THE APPLICABLE STATE STANDARDS FOR THE ENTIRE DURATION OF THE CONTRACT, OR UNTIL SUCH A TIME AS DIRECTED BY THE ENGINEER.
  - ⑤ THE PERIMETER EROSION BARRIER SHALL BE INSTALLED AT THE LOCATIONS SHOWN ON THE PLANS OR AS DIRECTED BY THE ENGINEER.

REVISIONS	
NAME	DATE

ILLINOIS DEPARTMENT OF TRANSPORTATION  
 U.S. RTE. 30 (LINCOLN HIGHWAY)  
 @ COTTAGE GROVE AVENUE  
 EROSION CONTROL PLAN

SCALE: 1" = 50'  
 DATE: 1/3/2008  
 DRAWN BY  
 CHECKED BY

PLOT DATE = 1/2/2008  
 FILE NAME = c:\projects\11-5-n-1\11-5-n-1-ero.dgn  
 PLOT SCALE = 50.0000 / IN.  
 USER NAME = dr-11-5-n-1

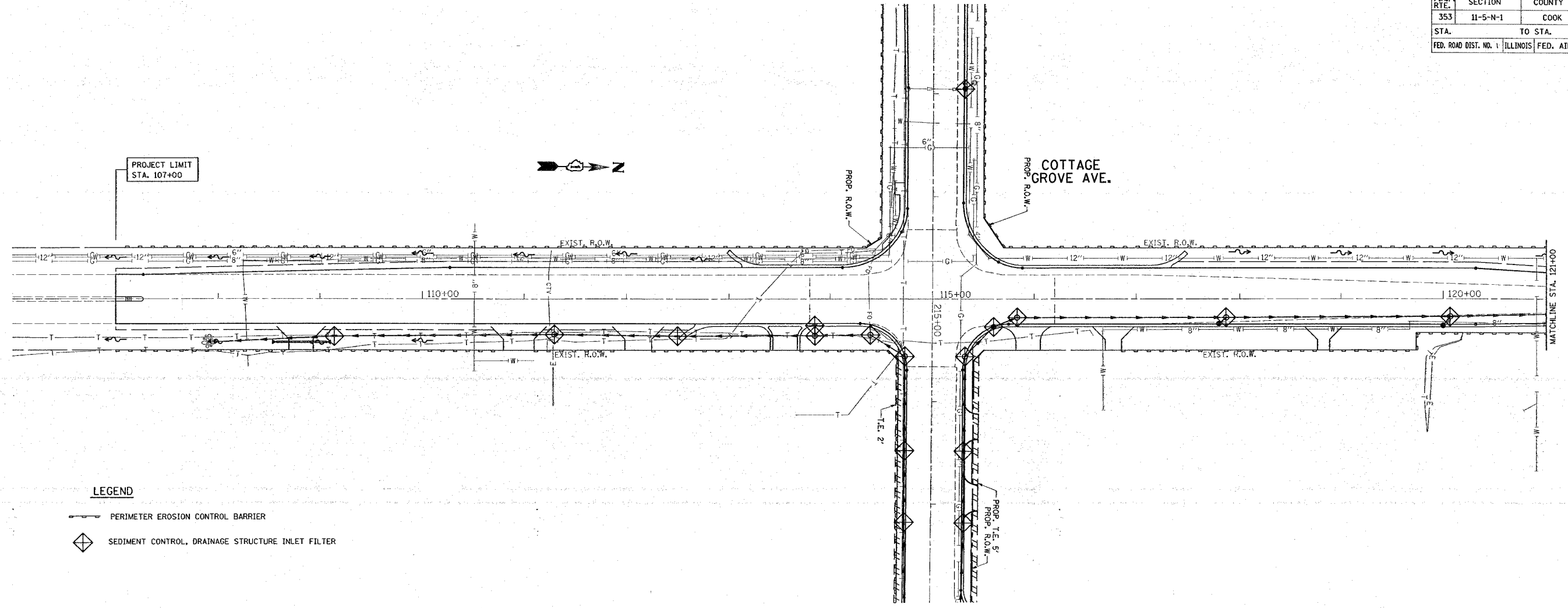
Rev. 1-7-08

REV. 2



\*REF-er001  
\*REF-er002

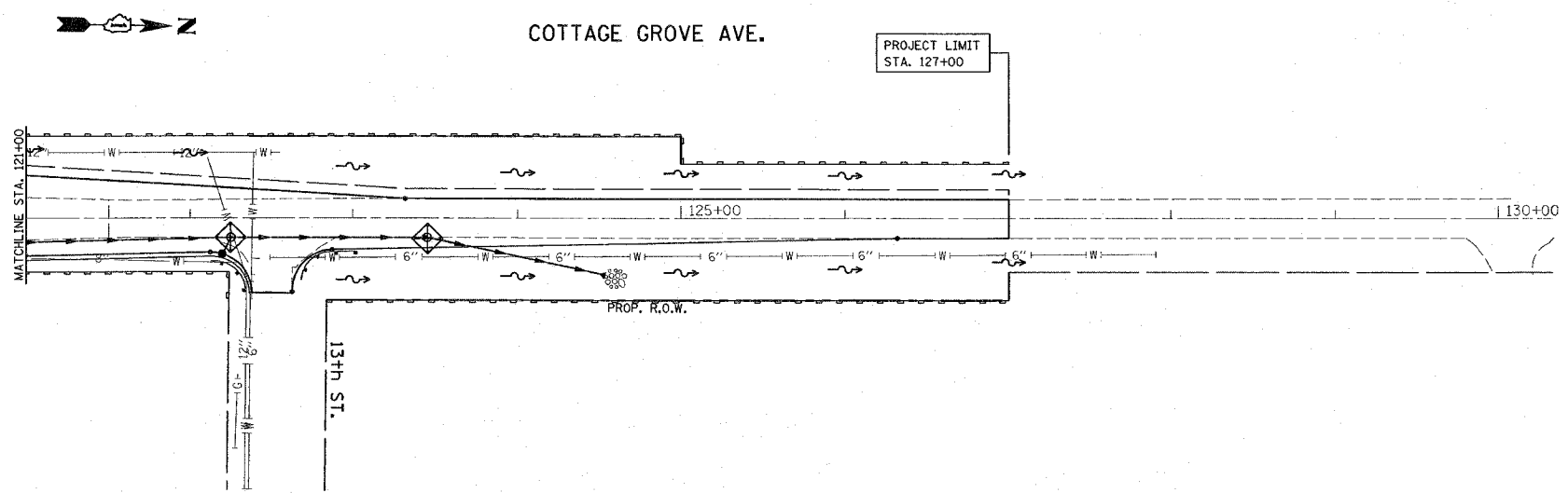
CONTRACT NO. 62949

F.A.P. RTE.	SECTION	COUNTY	TOTAL SHEETS	SHEET NO.
353	11-5-N-1	COOK	79	26
STA.		TO STA.		
FED. ROAD DIST. NO. 1		ILLINOIS FED. AID PROJECT		



**LEGEND**

-  PERIMETER EROSION CONTROL BARRIER
-  SEDIMENT CONTROL, DRAINAGE STRUCTURE INLET FILTER



**NOTES:**

- ① TEMPORARY EROSION CONTROL SEEDING TO BE PROVIDED AT ALL ERODIBLE BARE EARTH AREAS, REFER TO SPECIAL PROVISIONS.
- ② LOCATIONS OF TEMPORARY DITCH CHECKS TO BE DETERMINED BY THE ENGINEER.
- ③ NPDES PERMIT IS REQUIRED FOR THIS PROJECT.
- ④ ALL EROSION CONTROL MEASURES SHALL BE IN ACCORDANCE WITH THE REQUIREMENTS OF THE STANDARD SPECIFICATIONS AND OF THE APPLICABLE STATE STANDARDS FOR THE ENTIRE DURATION OF THE CONTRACT, OR UNTIL SUCH A TIME AS DIRECTED BY THE ENGINEER.
- ⑤ THE PERIMETER EROSION BARRIER SHALL BE INSTALLED AT THE LOCATIONS SHOWN ON THE PLANS OR AS DIRECTED BY THE ENGINEER.

REVISIONS	
NAME	DATE

ILLINOIS DEPARTMENT OF TRANSPORTATION  
**COTTAGE GROVE AVENUE**  
@ U.S. RTE. 30 (LINCOLN HIGHWAY)  
EROSION CONTROL PLAN

SCALE: 1"= 50'  
DATE: 1/3/2008

DRAWN BY  
CHECKED BY

PLOT DATE = 1/3/2008  
FILE NAME = c:\projects\110823\er001.dwg  
PLOT SCALE = 50.0000 / 1 IN.  
USER NAME = drake.dgn

Rev. 1-7-08

REV. 2