

F.A.P. RTE.	SECTION	COUNTY	TOTAL SHEETS	SHEET NO.
353	11-5-N-1	COOK	79	1

80

STATE OF ILLINOIS
DEPARTMENT OF TRANSPORTATION
DIVISION OF HIGHWAYS

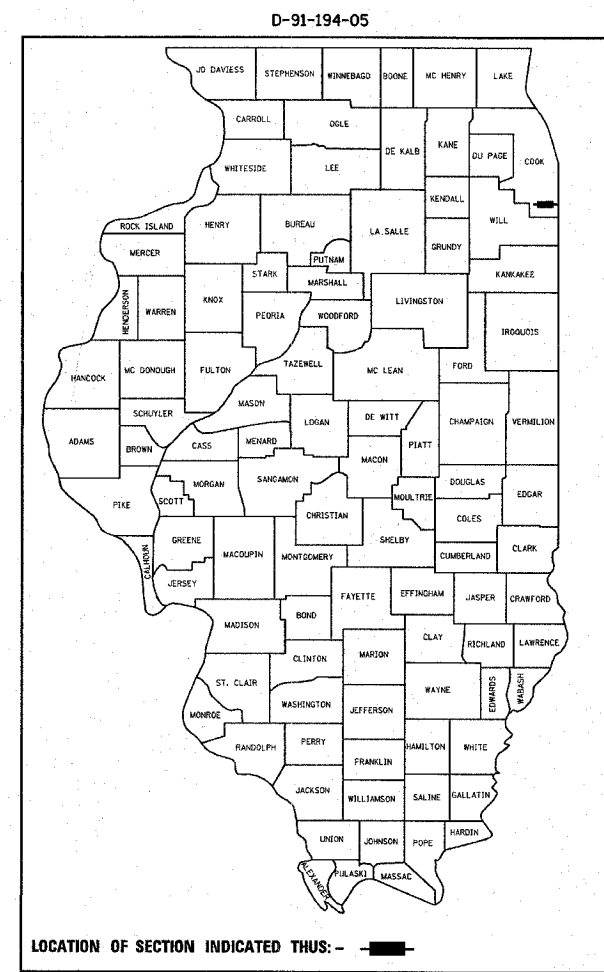
PROPOSED HIGHWAY PLANS

FAP ROUTE 353: US 30
AT COTTAGE GROVE AVE.
SECTION: 11-5-N-1

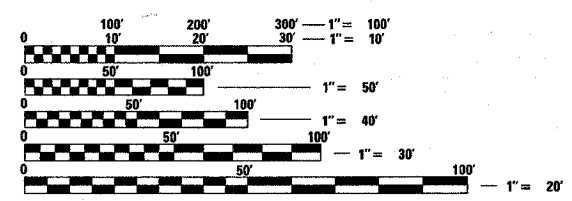
INTERSECTION IMPROVEMENT, TRAFFIC SIGNAL MODERNIZATION
PROJECT: ACHSIP-0353(012)
COOK COUNTY
C-91-194-05

FOR INDEX OF SHEETS, SEE SHEET NO. 2

PROJECT LOCATED IN CITY OF CHICAGO HEIGHTS AND VILLAGE OF FORD HEIGHTS.



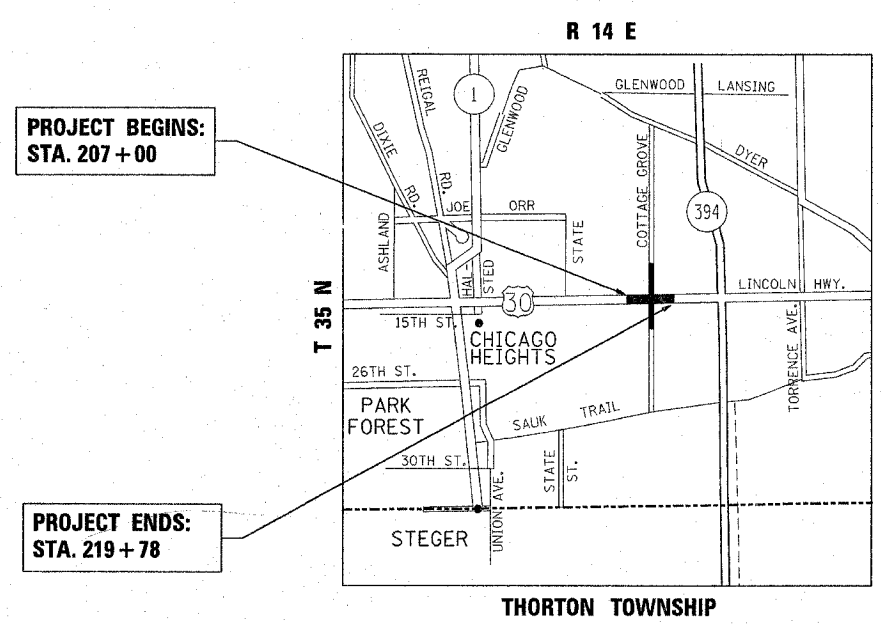
REGION ONE - PLAN PREPARATION ENGINEER - KEN ENG / J. CHANG (847) 705-4432



FULL SIZE PLANS HAVE BEEN PREPARED USING STANDARD ENGINEERING SCALES. REDUCED SIZED PLANS WILL NOT CONFORM TO STANDARD SCALES. IN MAKING MEASUREMENTS ON REDUCED PLANS, THE ABOVE SCALES MAY BE USED.

J.U.L.I.E.
JOINT UTILITY LOCATION INFORMATION FOR EXCAVATION
1-800-892-0123

CONTRACT NO. 62949



PROJECT BEGINS: STA. 207 + 00

PROJECT ENDS: STA. 219 + 78

GROSS AND NET LENGTH OF PROJECT = 1278 FT. (0.24 MILE)

TRAFFIC DATA

US 30: 2005 ADT = 22,400
COTTAGE GROVE AVE: 2002 ADT = 5,200

POSTED SPEED LIMIT:
COTTAGE GROVE AVE. = 45 MPH
US 30 = 35 TO 40 MPH

STATE OF ILLINOIS
DEPARTMENT OF TRANSPORTATION
DIVISION OF HIGHWAYS

SUBMITTED October 25 2007

Diane O. Keefe
DEPUTY DIRECTOR OF HIGHWAYS, REGION ENGINEER

December 7, 2007
Eric E. Harms
INTERIM ENGINEER OF DESIGN AND ENVIRONMENT

December 7, 2007
Christine M. Reed
DIRECTOR OF HIGHWAYS, CHIEF ENGINEER

PRINTED BY THE AUTHORITY OF THE STATE OF ILLINOIS