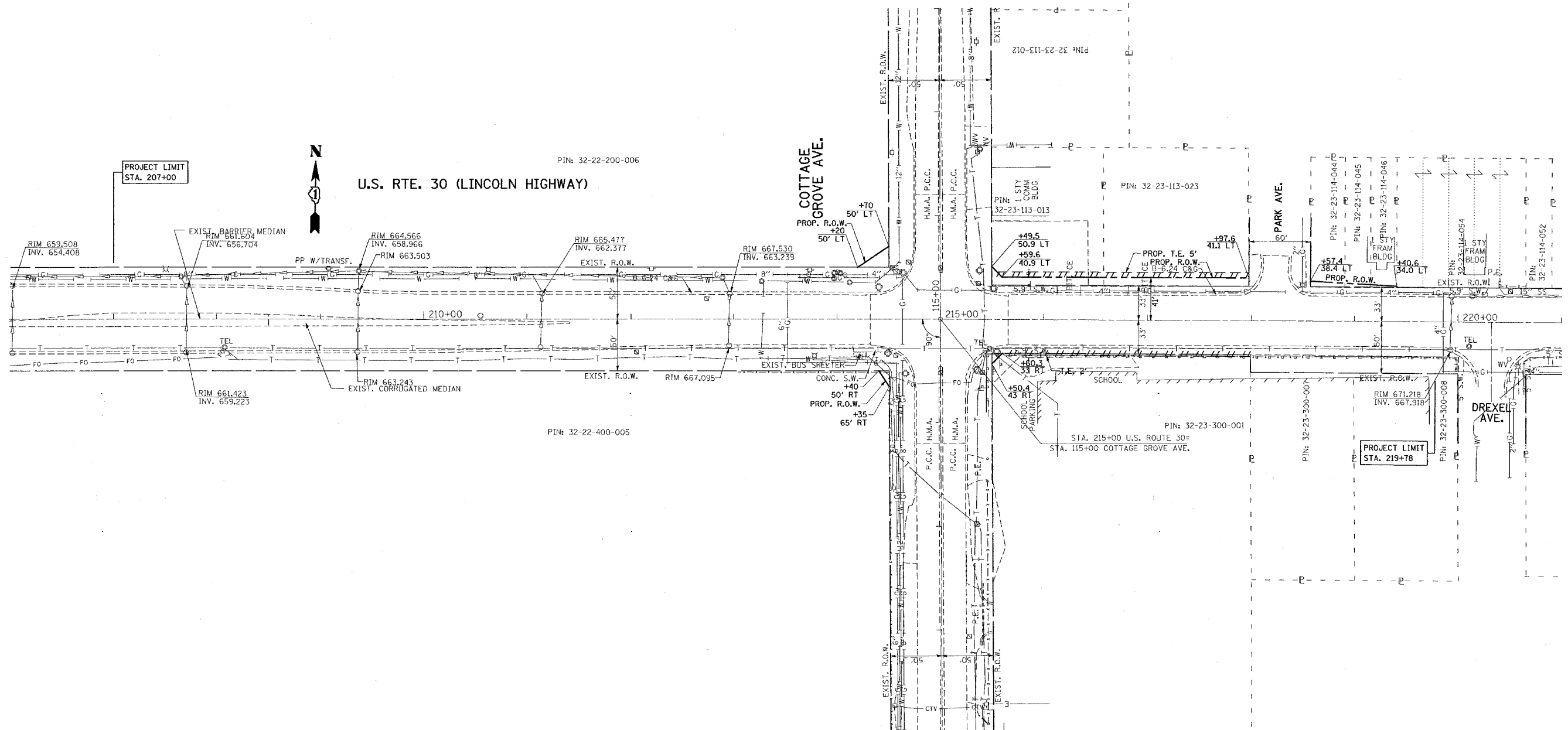


F.A.P. RTE.	SECTION	COUNTY	TOTAL SHEETS	SHEET NO.
353	11-5-N-1	COOK	79	27
STA.		TO STA.		
FED. ROAD DIST. NO. 1		ILLINOIS	FED. AID PROJECT	



PROJECT LIMIT  
STA. 207+00

U.S. RTE. 30 (LINCOLN HIGHWAY)

COTTAGE GROVE AVE.

PARK AVE.

DREXEL AVE.

PROJECT LIMIT  
STA. 219+78

PLOT DATE = 10/25/2007  
FILE NAME = c:\projects\1111\1111.dgn  
PLOT SCALE = 1/8" = 1'-0"  
USER NAME = bboard

REVISIONS	
NAME	DATE

ILLINOIS DEPARTMENT OF TRANSPORTATION  
**U.S. RTE. 30 (LINCOLN HIGHWAY)  
@ COTTAGE GROVE AVENUE  
EXISTING UTILITY PLAN**

SCALE: 1" = 50'  
DATE: 10/25/2007

DRAWN BY  
CHECKED BY