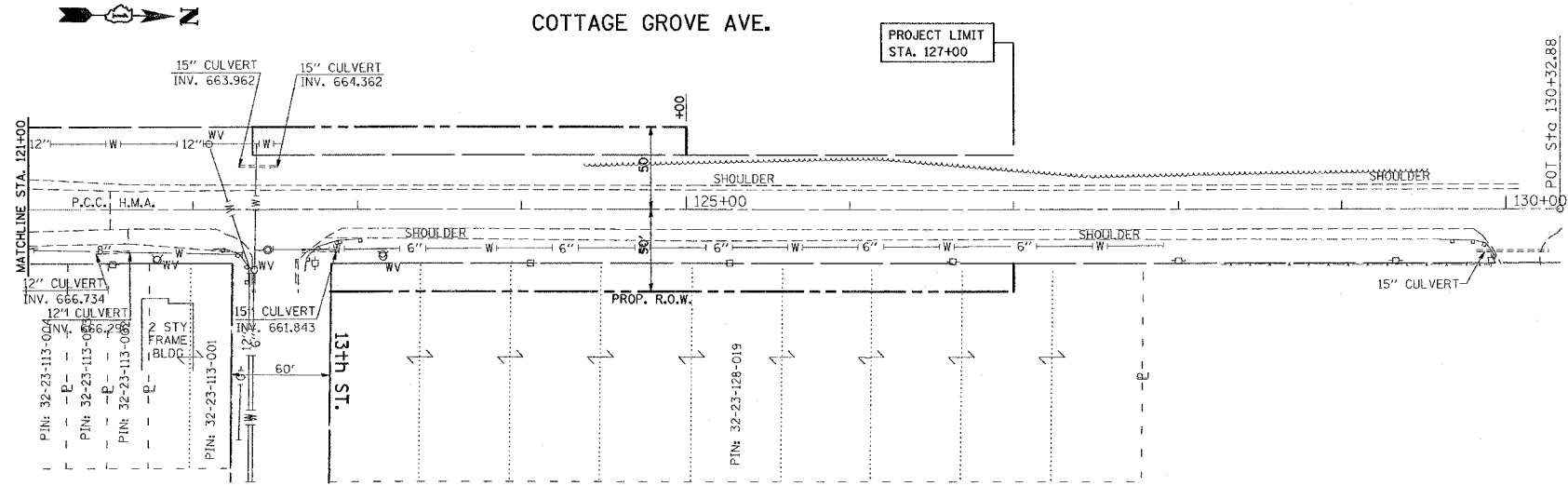
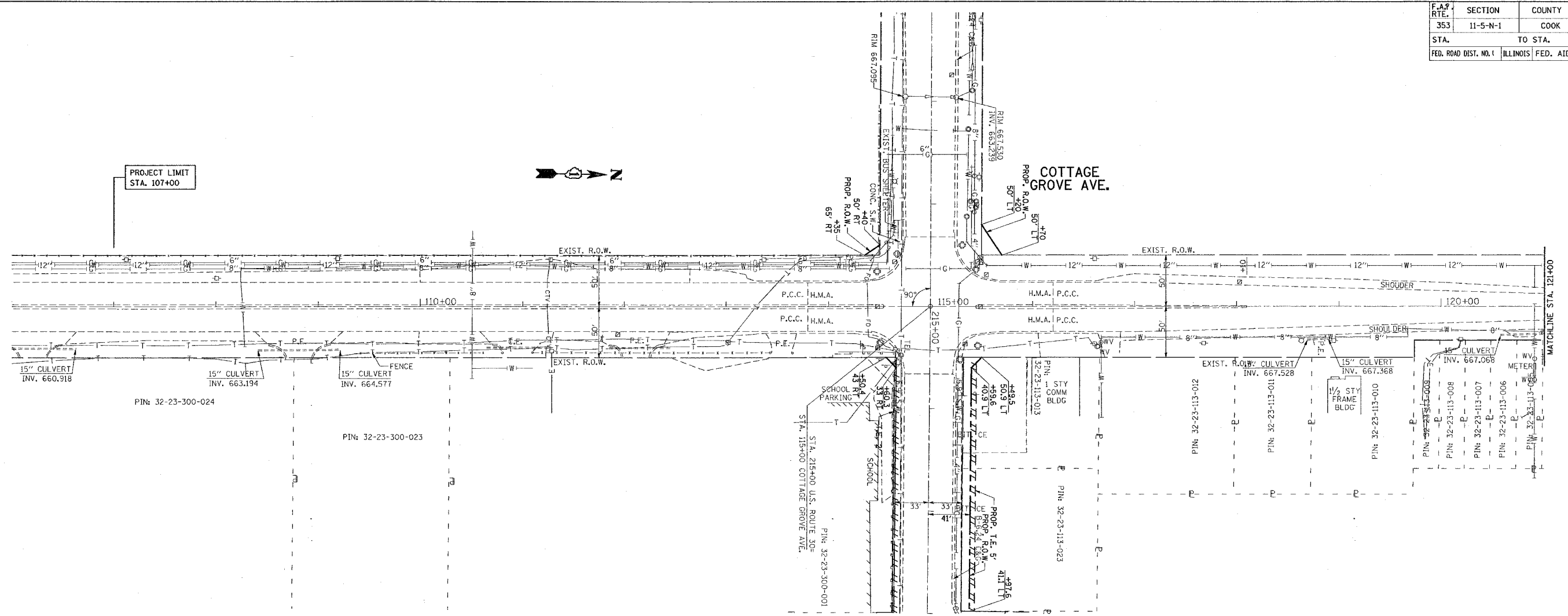


F.A.P. RTE.	SECTION	COUNTY	TOTAL SHEETS	SHEET NO.
353	11-5-N-1	COOK	79	28
STA.		TO STA.		
FED. ROAD DIST. NO. 1		ILLINOIS FED. AID PROJECT		



REVISIONS	
NAME	DATE

ILLINOIS DEPARTMENT OF TRANSPORTATION

COTTAGE GROVE AVENUE
@ U.S. RTE. 30 (LINCOLN HIGHWAY)
EXISTING UTILITY PLAN

SCALE: 1" = 50'
 DATE: 10/24/2007

DRAWN BY
 CHECKED BY

PLOT DATE = 10/24/2007
 FILE NAME = c:\p\proj\62949\11-5-n-1\11-5-n-1-28.dwg
 USER NAME = jld