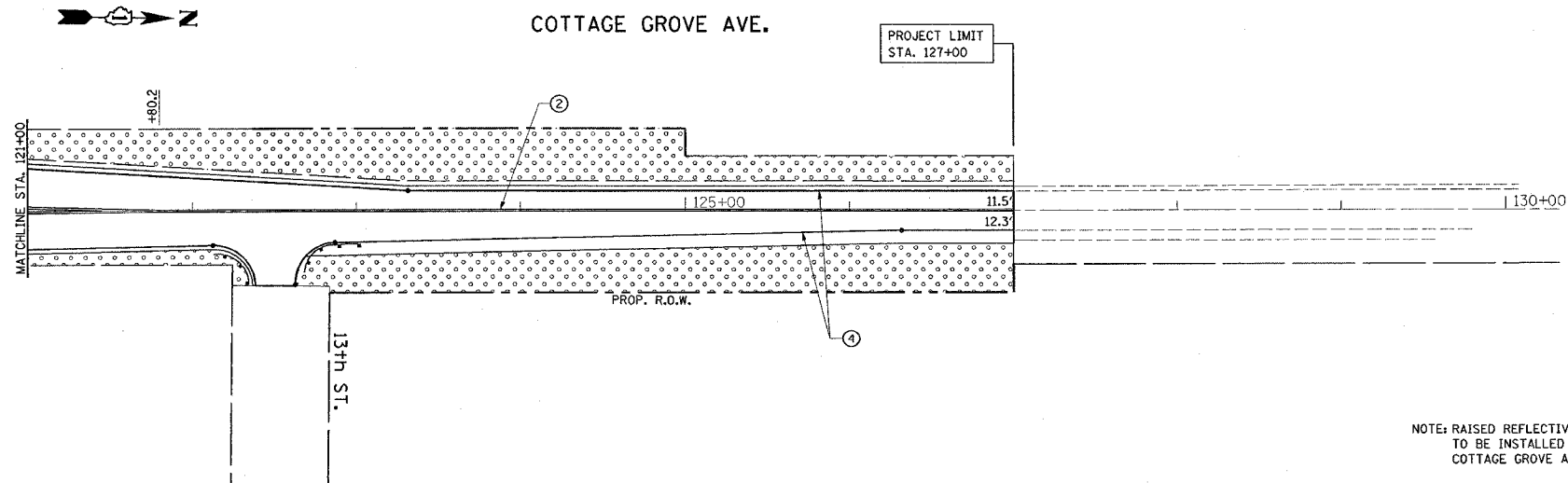
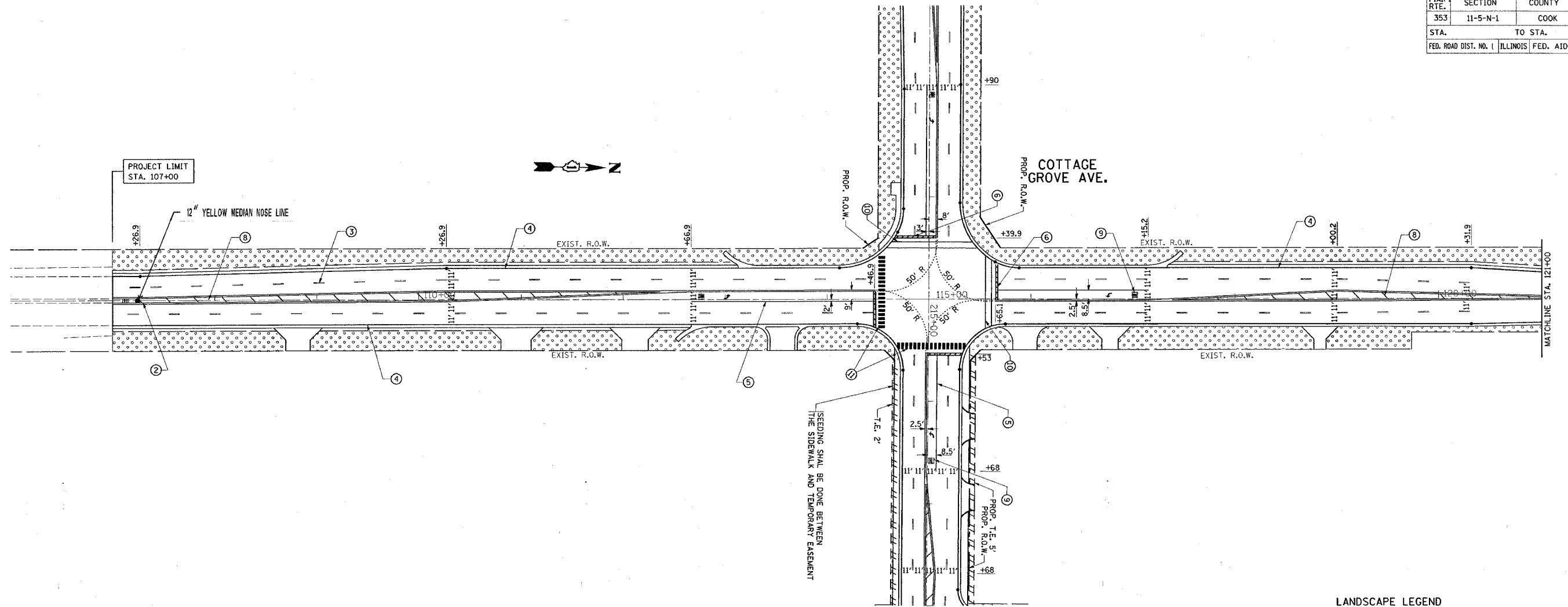


F.A.P. RTE.	SECTION	COUNTY	TOTAL SHEETS	SHEET NO.
353	11-5-N-1	COOK	79	36
STA.		TO STA.		
FED. ROAD DIST. NO. 1		ILLINOIS FED. AID PROJECT		



LANDSCAPE LEGEND

- SEEDING CLASS 2A WITH EROSION CONTROL BLANKET
- TOPSOIL FURNISH AND PLACE, 4"
- NITROGEN, PHOSPHOROUS & POTASSIUM FERTILIZER NUTRIENTS

PAVEMENT MARKING NOTES:

- ① PROPOSED 4" SOLID YELLOW LINE (AROUND MEDIAN)(TYP.)
- ② PROPOSED 4" DOUBLE YELLOW, 2 LINES @ 11" C-C (TYP.)
- ③ PROPOSED 4" WHITE SKIP-DASH, (10' DASH, 30' SKIP)(TYP.)
- ④ PROPOSED 4" WHITE EDGE LINE
- ⑤ PROPOSED 6" WHITE TURN LINE (TYP.)
- ⑥ PROPOSED 24" WHITE STOP BAR (TYP.)
- ⑦ PROPOSED 12" YELLOW DIAGONALS, (45° @ 75' C-C)
- ⑧ PROPOSED 12" YELLOW DIAGONALS, (45° @ 20' C-C)
- ⑨ PROPOSED WHITE PAVEMENT MARKINGS LETTERS AND SYMBOLS (TYP.)
- ⑩ PROPOSED 6" WHITE CROSSWALK, (2 LINES @ 6' C-C)
- ⑪ PROPOSED 12" WHITE CROSSWALK, (6' LINE @ 3' C-C)

NOTE: RAISED REFLECTIVE PAVEMENT MARKERS TO BE INSTALLED ON U.S. 30 AND COTTAGE GROVE AVE.

REVISIONS	
NAME	DATE

ILLINOIS DEPARTMENT OF TRANSPORTATION
COTTAGE GROVE AVENUE
 @ U.S. RTE. 30 (LINCOLN HIGHWAY)
 PAVEMENT MARKING &
 LANDSCAPING PLAN

SCALE: 1" = 50'
 DATE: 12/13/2007

DRAWN BY
 CHECKED BY

Rev. 1