

TEMPORARY TRAFFIC SIGNAL LEGEND

	PROPOSED	EXISTING		PROPOSED	EXISTING
TEMPORARY CONTROLLER CABINET	[Symbol]	[Symbol]	HEAVY-DUTY HANDHOLE	[Symbol]	[Symbol]
TEMPORARY SERVICE INSTALLATION, (P) POLE OR (G) GROUND MOUNT	[Symbol]	[Symbol]	DOUBLE HANDHOLE	[Symbol]	[Symbol]
TEMPORARY TRAFFIC SIGNAL HEAD	[Symbol]	[Symbol]	G.S. CONDUIT IN TRENCH OR PUSHED	[Symbol]	[Symbol]
SPAN WIRE MOUNTED ORIGINAL LOCATION	[Symbol]	[Symbol]	TEMPORARY SPAN WIRE, TETHER WIRE, AND CABLE	[Symbol]	[Symbol]
TEMPORARY TRAFFIC SIGNAL HEAD	[Symbol]	[Symbol]	COMMON TRENCH	CT	[Symbol]
SPAN WIRE MOUNTED SECONDARY LOCATION	[Symbol]	[Symbol]	UNIT DUCT	UD	[Symbol]
TEMPORARY PEDESTRIAN SIGNAL HEAD, BRACKET MOUNTED	[Symbol]	[Symbol]	TEMPORARY PEDESTRIAN PUSHBUTTON DETECTOR	[Symbol]	[Symbol]
TEMPORARY WOOD POLE (CLASS 5 OR BETTER) 45 FOOT (13.7m) MINIMUM	[Symbol]	[Symbol]	DETECTOR LOOP, TYPE I	[Symbol]	[Symbol]
EXISTING SIGNAL POST AND FOUNDATION TO BE REMOVED	[Symbol]	[Symbol]	PERFORMED DETECTOR LOOP	[Symbol]	[Symbol]
STEEL MAST ARM ASSEMBLY AND POLE	[Symbol]	[Symbol]	MICROWAVE VEHICLE SENSOR	[Symbol]	[Symbol]
ALUMINUM MAST ARM ASSEMBLY AND POLE	[Symbol]	[Symbol]	VIDEO DETECTOR	[Symbol]	[Symbol]
COMBINATION MAST ARM ASSEMBLY AND POLE, STEEL WITH LUMINAIRE	[Symbol]	[Symbol]	CLOSED CIRCUIT TV	[Symbol]	[Symbol]
EXISTING STREET LIGHT, FOUNDATION AND LUMINAIRE TO REMAIN	[Symbol]	[Symbol]	EMERGENCY VEHICLE SYSTEM DETECTOR	[Symbol]	[Symbol]
HANDHOLE	[Symbol]	[Symbol]	CONFIRMATION BEACON	[Symbol]	[Symbol]
VIDEO DETECTION ZONE	[Symbol]	[Symbol]	REMOVAL	[Symbol]	[Symbol]
WIRELESS INTERCONNECT (ANTENNA)	[Symbol]	[Symbol]	RELOCATE	[Symbol]	[Symbol]

THE FOLLOWING ITEMS SHALL BE REMOVED BY THE CONTRACTOR AND SHALL BE DISPOSED OF BY THEM OUTSIDE THE RIGHT-OF-WAY AT THEIR EXPENSE. THE SALVAGE VALUE OF THE REMOVED EQUIPMENT SHALL BE REFLECTED IN THE CONTRACT BID PRICE.

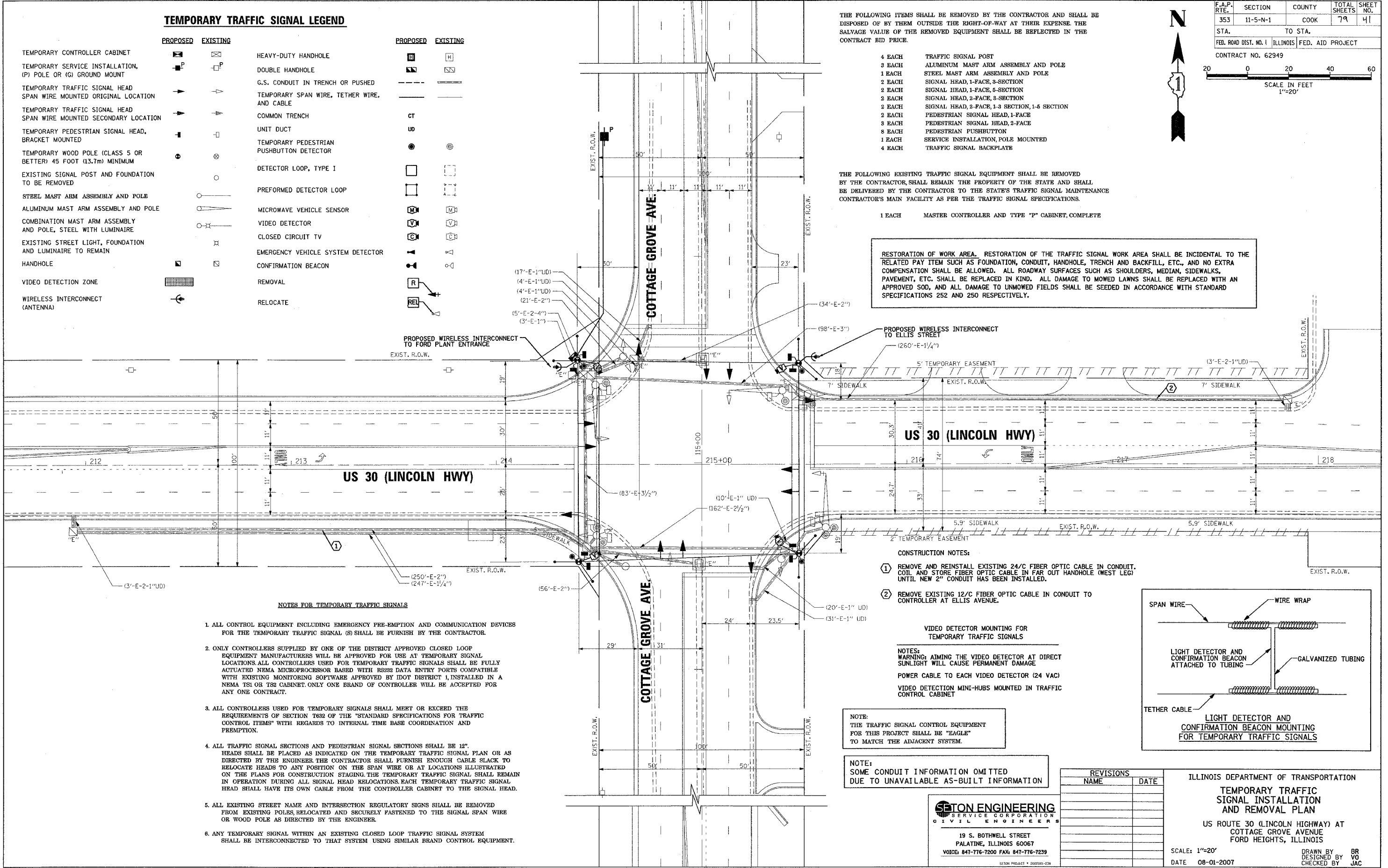
- 4 EACH TRAFFIC SIGNAL POST
- 3 EACH ALUMINUM MAST ARM ASSEMBLY AND POLE
- 1 EACH STEEL MAST ARM ASSEMBLY AND POLE
- 2 EACH SIGNAL HEAD, 1-FACE, 4-SECTION
- 2 EACH SIGNAL HEAD, 1-FACE, 5-SECTION
- 2 EACH SIGNAL HEAD, 2-FACE, 4-SECTION
- 2 EACH SIGNAL HEAD, 2-FACE, 1-3 SECTION, 1-5 SECTION
- 2 EACH PEDESTRIAN SIGNAL HEAD, 1-FACE
- 3 EACH PEDESTRIAN SIGNAL HEAD, 2-FACE
- 8 EACH PEDESTRIAN PUSHBUTTON
- 1 EACH SERVICE INSTALLATION, POLE MOUNTED
- 4 EACH TRAFFIC SIGNAL BACKPLATE

THE FOLLOWING EXISTING TRAFFIC SIGNAL EQUIPMENT SHALL BE REMOVED BY THE CONTRACTOR, SHALL REMAIN THE PROPERTY OF THE STATE AND SHALL BE DELIVERED BY THE CONTRACTOR TO THE STATE'S TRAFFIC SIGNAL MAINTENANCE CONTRACTOR'S MAIN FACILITY AS PER THE TRAFFIC SIGNAL SPECIFICATIONS.

- 1 EACH MASTER CONTROLLER AND TYPE "P" CABINET, COMPLETE

RESTORATION OF WORK AREA. RESTORATION OF THE TRAFFIC SIGNAL WORK AREA SHALL BE INCIDENTAL TO THE RELATED PAY ITEM SUCH AS FOUNDATION, CONDUIT, HANDHOLE, TRENCH AND BACKFILL, ETC., AND NO EXTRA COMPENSATION SHALL BE ALLOWED. ALL ROADWAY SURFACES SUCH AS SHOULDERS, MEDIAN, SIDEWALKS, PAVEMENT, ETC. SHALL BE REPLACED IN KIND. ALL DAMAGE TO MOWED LAWNS SHALL BE REPLACED WITH AN APPROVED SOD, AND ALL DAMAGE TO UNMOWED FIELDS SHALL BE SEEDED IN ACCORDANCE WITH STANDARD SPECIFICATIONS 252 AND 250 RESPECTIVELY.

F.A.P. RTE.	SECTION	COUNTY	TOTAL SHEETS	SHEET NO.
353	11-5-N-1	COOK	79	41
STA.	TO STA.			
FED. ROAD DIST. NO. 1	ILLINOIS	FED. AID PROJECT		
CONTRACT NO. 62949				



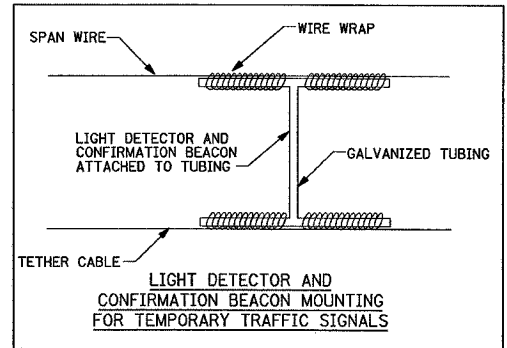
NOTES FOR TEMPORARY TRAFFIC SIGNALS

1. ALL CONTROL EQUIPMENT INCLUDING EMERGENCY PRE-EMPTION AND COMMUNICATION DEVICES FOR THE TEMPORARY TRAFFIC SIGNAL (S) SHALL BE FURNISH BY THE CONTRACTOR.
2. ONLY CONTROLLERS SUPPLIED BY ONE OF THE DISTRICT APPROVED CLOSED LOOP EQUIPMENT MANUFACTURERS WILL BE APPROVED FOR USE AT TEMPORARY SIGNAL LOCATIONS. ALL CONTROLLERS USED FOR TEMPORARY TRAFFIC SIGNALS SHALL BE FULLY ACTUATED NEMA MICROPROCESSOR BASED WITH RS232 DATA ENTRY PORTS COMPATIBLE WITH EXISTING MONITORING SOFTWARE APPROVED BY IDOT DISTRICT 1, INSTALLED IN A NEMA TS1 OR TS2 CABINET. ONLY ONE BRAND OF CONTROLLER WILL BE ACCEPTED FOR ANY ONE CONTRACT.
3. ALL CONTROLLERS USED FOR TEMPORARY SIGNALS SHALL MEET OR EXCEED THE REQUIREMENTS OF SECTION T632 OF THE "STANDARD SPECIFICATIONS FOR TRAFFIC CONTROL ITEMS" WITH REGARDS TO INTERNAL TIME BASE COORDINATION AND PREMPTION.
4. ALL TRAFFIC SIGNAL SECTIONS AND PEDESTRIAN SIGNAL SECTIONS SHALL BE 12". HEADS SHALL BE PLACED AS INDICATED ON THE TEMPORARY TRAFFIC SIGNAL PLAN OR AS DIRECTED BY THE ENGINEER. THE CONTRACTOR SHALL FURNISH ENOUGH CABLE SLACK TO RELOCATE HEADS TO ANY POSITION ON THE SPAN WIRE OR AT LOCATIONS ILLUSTRATED ON THE PLANS FOR CONSTRUCTION STAGING. THE TEMPORARY TRAFFIC SIGNAL SHALL REMAIN IN OPERATION DURING ALL SIGNAL HEAD RELOCATIONS. EACH TEMPORARY TRAFFIC SIGNAL HEAD SHALL HAVE ITS OWN CABLE FROM THE CONTROLLER CABINET TO THE SIGNAL HEAD.
5. ALL EXISTING STREET NAME AND INTERSECTION REGULATORY SIGNS SHALL BE REMOVED FROM EXISTING POLES, RELOCATED AND SECURELY FASTENED TO THE SIGNAL SPAN WIRE OR WOOD POLE AS DIRECTED BY THE ENGINEER.
6. ANY TEMPORARY SIGNAL WITHIN AN EXISTING CLOSED LOOP TRAFFIC SIGNAL SYSTEM SHALL BE INTERCONNECTED TO THAT SYSTEM USING SIMILAR BRAND CONTROL EQUIPMENT.

- CONSTRUCTION NOTES:**
1. REMOVE AND REINSTALL EXISTING 24/C FIBER OPTIC CABLE IN CONDUIT. COIL AND STORE FIBER OPTIC CABLE IN FAR OUT HANDHOLE (WEST LEG) UNTIL NEW 2" CONDUIT HAS BEEN INSTALLED.
 2. REMOVE EXISTING 12/C FIBER OPTIC CABLE IN CONDUIT TO CONTROLLER AT ELLIS AVENUE.

VIDEO DETECTOR MOUNTING FOR TEMPORARY TRAFFIC SIGNALS

NOTES:
 WARNING: AIMING THE VIDEO DETECTOR AT DIRECT SUNLIGHT WILL CAUSE PERMANENT DAMAGE
 POWER CABLE TO EACH VIDEO DETECTOR (24 VAC)
 VIDEO DETECTION MINI-HUBS MOUNTED IN TRAFFIC CONTROL CABINET



NOTE:
 THE TRAFFIC SIGNAL CONTROL EQUIPMENT FOR THIS PROJECT SHALL BE "EAGLE" TO MATCH THE ADJACENT SYSTEM.

NOTE:
 SOME CONDUIT INFORMATION OMITTED DUE TO UNAVAILABLE AS-BUILT INFORMATION

SETON ENGINEERING
 SERVICE CORPORATION
 CIVIL ENGINEERS

19 S. BOWWELL STREET
 PALATINE, ILLINOIS 60067
 VOICE: 847-776-7200 FAX: 847-776-7239

REVISIONS	
NAME	DATE

ILLINOIS DEPARTMENT OF TRANSPORTATION

TEMPORARY TRAFFIC SIGNAL INSTALLATION AND REMOVAL PLAN

US ROUTE 30 (LINCOLN HIGHWAY) AT COTTAGE GROVE AVENUE FORD HEIGHTS, ILLINOIS

SCALE: 1"=20'
 DATE: 08-01-2007

DRAWN BY: BR
 DESIGNED BY: VO
 CHECKED BY: JAC