

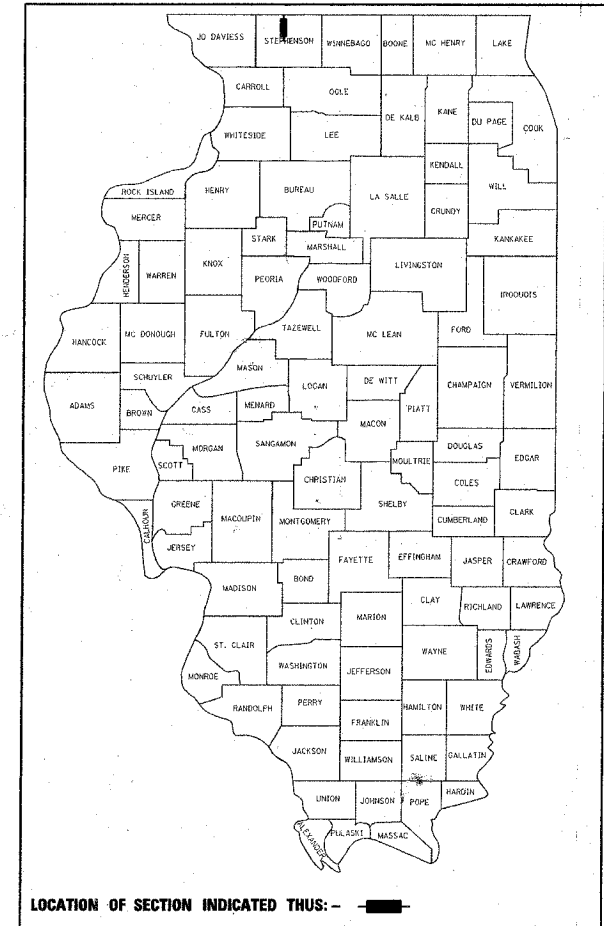
F.A.S. RTE.	SECTION	COUNTY	TOTAL SHEETS	SHEET NO.
1087	106T-1	STEPHENSON	78	1
			74	
			82	

STATE OF ILLINOIS
DEPARTMENT OF TRANSPORTATION
DIVISION OF HIGHWAYS

**PROPOSED
HIGHWAY PLANS**

FAS ROUTE 1087 (IL 73)
SECTION 106T-1
PROJECT ACRS-1087(107)
STEPHENSON COUNTY
CULVERT REPLACEMENT & HOT-MIX ASPHALT SHOULDER

D-92-018-07

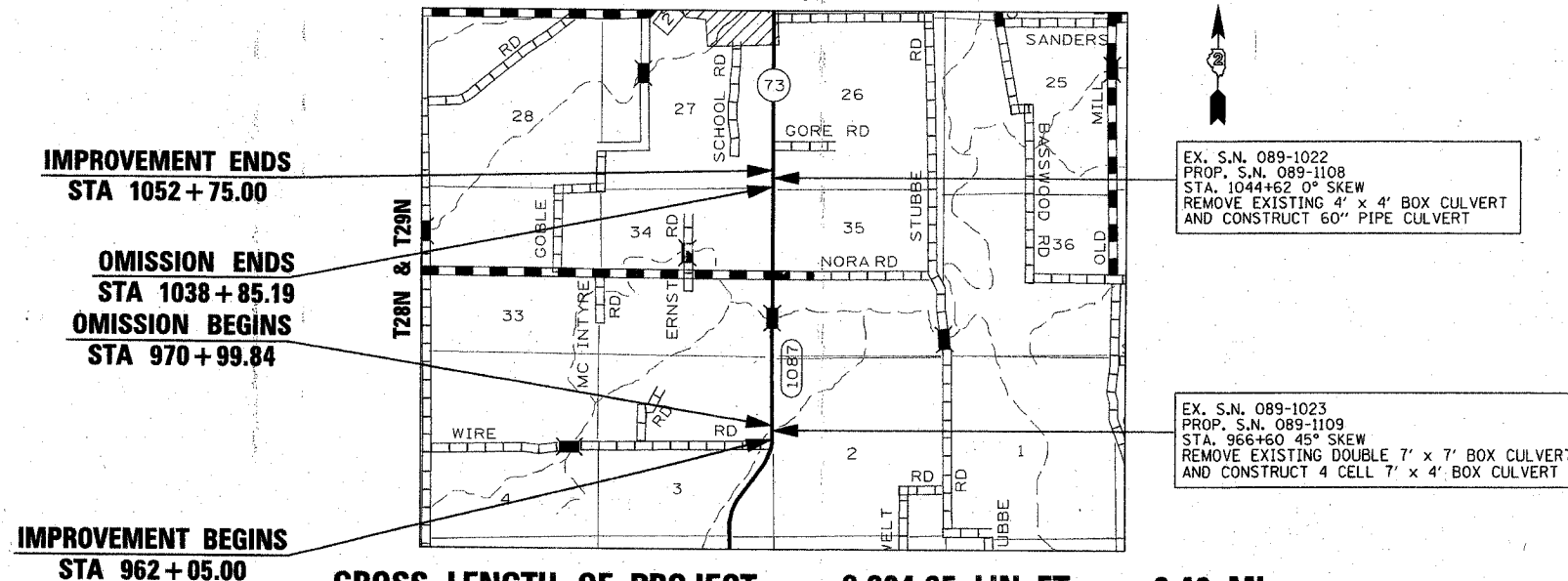


LOCATION OF SECTION INDICATED THUS: - ■ -

FOR INDEX OF SHEETS, SEE SHEET NO. 2
FOR STATE STANDARDS, SEE SHEET NO. 2

DESIGN DESIGNATION
175 (2028) - MAJOR COLLECTOR

C-92-088-07
R6E & R6-7E

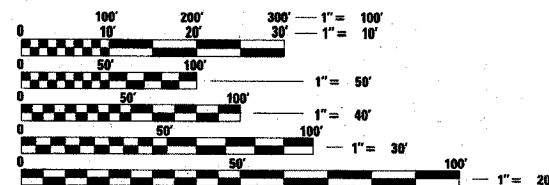


EX. S.N. 089-1022
PROP. S.N. 089-1108
STA. 1044+62 0° SKEW
REMOVE EXISTING 4' x 4' BOX CULVERT
AND CONSTRUCT 60" PIPE CULVERT

EX. S.N. 089-1023
PROP. S.N. 089-1109
STA. 966+60 45° SKEW
REMOVE EXISTING DOUBLE 7' x 7' BOX CULVERT
AND CONSTRUCT 4 CELL 7' x 4' BOX CULVERT

IMPROVEMENT BEGINS
STA 962+05.00

GROSS LENGTH OF PROJECT = 2,284.65 LIN. FT. = 0.43 MI.
NET LENGTH = 2,284.65 LIN. FT. = 0.43 MI.



FULL SIZE PLANS HAVE BEEN PREPARED USING STANDARD ENGINEERING SCALES. REDUCED SIZED PLANS WILL NOT CONFORM TO STANDARD SCALES. IN MAKING MEASUREMENTS ON REDUCED PLANS, THE ABOVE SCALES MAY BE USED.

J.U.L.I.E.
JOINT UTILITY LOCATION INFORMATION FOR EXCAVATION
1-800-892-0123

SN. 089-1023 WADDAMS TOWNSHIP, SECTION 2,3
SN. 089-1022 WINSLOW TOWNSHIP, SECTION 26, 27

CONTRACT NO. 64C84

PROJECT ENGINEER
MASOOD AHMAD

SQUAD LEADER
TRACI HELFICH
(815) 284-5932

GREGORY R. BRUNN
DLZ ILLINOIS, INC.
(847) 640-0840

ROADWAY AND STRUCTURES DESIGNED BY

WAYNE A. TREX
REGISTERED STRUCTURAL ENGINEER
081-005429
STATE OF ILLINOIS

SEAL

WAYNE A. TREX
SIGNATURE

11-30-08
EXPIRES

GREGORY R. BRUNN
REGISTERED PROFESSIONAL ENGINEER
049216
STATE OF ILLINOIS

SEAL

GREGORY R. BRUNN
SIGNATURE

11/30/07
EXPIRES

STATE OF ILLINOIS
DEPARTMENT OF TRANSPORTATION
DIVISION OF HIGHWAYS

SUBMITTED 10/15/07 20 07

DEPUTY DIRECTOR OF HIGHWAYS, REGION ENGINEER
December 7, 2007

ENGINEER OF DESIGN AND ENVIRONMENT
December 7, 2007

DIRECTOR OF HIGHWAYS, CHIEF ENGINEER

**PRINTED BY THE AUTHORITY
OF THE STATE OF ILLINOIS**