

F.A.S. RTE.	SECTION	COUNTY	TOTAL SHEETS	SHEET NO.
1087	106T-1	STEPHENSON	78	13
STA.		TO STA.		
FED. ROAD DIST. NO.		ILLINOIS FED. AID PROJECT		

HORIZONTAL & VERTICAL CONTROL

Chain IL73ENG contains:
 1 CUR 200 CUR 210 CUR 220 CUR 230
 CUR 240 CUR 250 CUR 260 CUR 270
 CUR 280 CUR 290 CUR 300 45

Beginning chain IL73ENG description
 =====

Point 1 N 2,074,143.3623 E 2,388,001.8870 Sta 594+07.7500

COURSE FROM 1 TO PC 200 359' 10" 32.1362° DIST 4,456.9568'

Curve Data

Curve 260
 P.I. Station 940+97.9074 N 2,105,458.9875 E 2,397,044.4750
 DELTA = 39° 06' 47.4736" (RT)
 DEGREE = 5° 00' 57.3956"
 Tangent = 405.7704'
 Length = 779.7773'
 Radius = 1,142.2733'
 External = 69.9304'
 Long Chord = 764.7241'
 Mid. Ord. = 65.8962'
 S. E. = 0.000
 P.C. Station 936+92.1370 N 2,105,053.2208 E 2,397,046.2212
 P.T. Station 944+71.9143 N 2,105,774.9239 E 2,397,299.0998
 C.C. N 2,105,058.1366 E 2,398,188.4839

COURSE FROM PT 260 TO PC 270 38' 51" 59.8109° DIST 1,162.4580'

Curve Data

Curve 270
 P.I. Station 961+40.5539 N 2,107,074.1416 E 2,398,346.1869
 DELTA = 38° 59' 18.5591" (LT)
 DEGREE = 4° 00' 25.4325"
 Tangent = 506.1816'
 Length = 972.9938'
 Radius = 1,429.8691'
 External = 86.9517'
 Long Chord = 954.3294'
 Mid. Ord. = 81.9672'
 S. E. = 0.000
 P.C. Station 956+34.3723 N 2,106,680.0241 E 2,398,028.5532
 P.T. Station 966+07.3661 N 2,107,580.3220 E 2,398,345.1102
 C.C. N 2,107,577.2805 E 2,396,915.2443

COURSE FROM PT 270 TO PC 280 359' 52" 41.2519° DIST 12,173.9918'

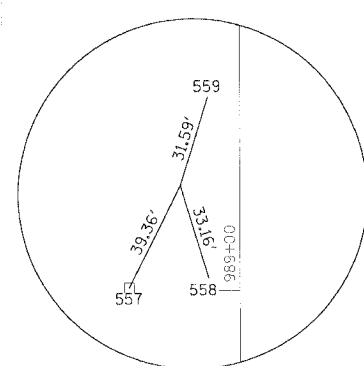
Curve Data

Curve 280
 P.I. Station 1091+92.2397 N 2,120,165.1672 E 2,398,318.3408
 DELTA = 16° 24' 25.3425" (LT)
 DEGREE = 2° 00' 37.1525"
 Tangent = 410.8819'
 Length = 816.1406'
 Radius = 2,850.0823'
 External = 29.4651'
 Long Chord = 813.3550'
 Mid. Ord. = 29.1636'
 S. E. = 0.000
 P.C. Station 1087+81.3579 N 2,119,754.2863 E 2,398,319.2148
 P.T. Station 1095+97.4985 N 2,120,559.0699 E 2,398,201.4452
 C.C. N 2,119,748.2238 E 2,395,469.1389

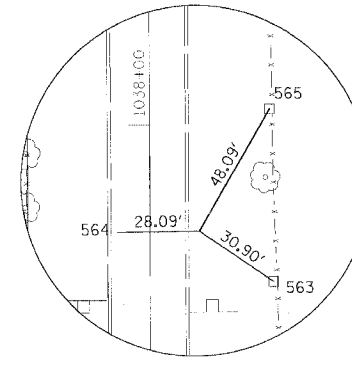
COURSE FROM PT 280 TO PC 290 343' 28" 15.9094° DIST 1,824.3762'

Point 45 N 2,127,007.6214 E 2,394,901.2844 Sta 1170+46.6532

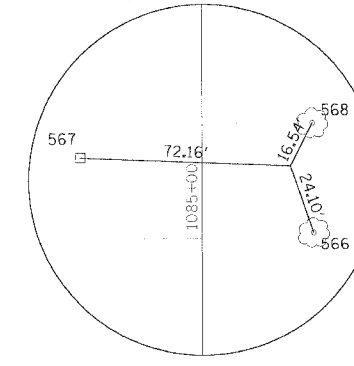
Ending chain IL73ENG description
 =====



HORIZONTAL CONTROL
POINT No. 9732



HORIZONTAL CONTROL
POINT No. 9735



HORIZONTAL CONTROL
POINT No. 9737



HORIZONTAL CONTROL POINTS

POINT	NORTH	EAST	ELEVATION	CHAIN	STATION	OFFSET	DESCRIPTION
9732	2109909.1997	2398319.7002	838.7229	IL73ENG	989+36.29	-20.4561'	PHOTO CONTROL H. & V.
9735	2114736.6372	2398346.8729	874.2019	IL73ENG	1037+63.66	16.9850'	PHOTO CONTROL H. & V.
9737	2119497.6302	2398350.1077	886.5899	IL73ENG	1085+24.64	30.3469'	PHOTO CONTROL H. & V.

BENCH MARKS

POINT	NORTH	EAST	ELEVATION	CHAIN	STATION	OFFSET	DESCRIPTION
427	2105218.1988	2397017.2766	847.1319	IL73ENG	938+52.20	39.8208' LT	R.O.W. MARKER
430	2107386.1497	2398120.4250	794.8269	IL73ENG	963+79.43	209.6268' LT	HEADWALL
432	2109867.8192	2398322.6120	835.7959	IL73ENG	988+94.91	17.6324' LT	FIELD ENTRANCE
434	2112697.4455	2398295.7772	799.6639	IL73ENG	1017+24.58	38.4482' LT	HEADWALL
435	2114662.7884	2398372.7608	885.9929	IL73ENG	1036+89.76	42.7157' RT	R.O.W. MARKER
437	2119089.1226	2398299.9789	884.1259	IL73ENG	1081+16.24	20.6507' LT	HEADWALL
439	2121253.0008	2397977.5280	783.9349	IL73ENG	1103+26.46	17.2414' LT	HANDRAIL
440	2122040.7626	2397783.6962	781.3849	IL73ENG	1111+36.81	21.0543' RT	WALL

SURVEY WORK POINTS

POINT	NORTH	EAST	ELEVATION	CHAIN	STATION	OFFSET	DESCRIPTION
108	2105472.9464	2397083.9970	832.2399	IL73ENG	941+07.44	37.5396' LT	SURVEY POINT
109	2107402.0914	2398356.4901	797.1049	IL73ENG	964+31.37	21.9851' RT	SURVEY POINT
110	2112688.7922	2398302.2327	800.4349	IL73ENG	1017+15.92	32.0111' LT	SURVEY POINT
111	2120618.9140	2398221.7445	805.7139	IL73ENG	1096+49.09	36.486' RT	SURVEY POINT
112	2122559.6430	2397598.1528	786.5569	IL73ENG	1116+83.42	25.4889' RT	SURVEY POINT

REFERENCE TIES

POINT	CHAIN	STATION	OFFSET	DESCRIPTION
557	IL73ENG	989+01.10	38.0696' LT	FENCE POST
558	IL73ENG	989+04.58	10.7644' LT	EDGE OF PAVEMENT
559	IL73ENG	989+66.42	10.9668' LT	EDGE OF PAVEMENT
563	IL73ENG	1037+46.12	42.4296' RT	FENCE POST
564	IL73ENG	1037+63.38	11.1003' LT	EDGE OF PAVEMENT
565	IL73ENG	1038+05.24	41.1535' RT	FENCE POST
566	IL73ENG	1085+01.88	38.2658' RT	DECIDUOUS TREE
567	IL73ENG	1085+27.63	41.7549' LT	FENCE POST
568	IL73ENG	1085+39.39	37.8357' RT	DECIDUOUS TREE

REVISIONS	
NAME	DATE

ILLINOIS DEPARTMENT OF TRANSPORTATION
HORIZONTAL & VERTICAL CONTROL
 IL RTE 73 CULVERT REPLACEMENTS
 SCALE: VERT.: N.A.
 HORIZ.: 1"=20'
 DATE: OCTOBER 1, 2007
 DRAWN BY: DLZ
 CHECKED BY: GB

HORIZONTAL & VERTICAL CONTROL

DATE: 10/1/07
 FILE NAME: ILL73ENG
 USER: DLZ

