
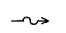
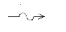

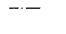



F.A.S. RTE.	SECTION	COUNTY	TOTAL SHEETS	SHEET NO.
1087	106T-1	STEPHENSON	78	14
STA. 959+00		TO STA. 965+00		
FED. ROAD DIST. NO.		ILLINOIS FED. AID PROJECT		

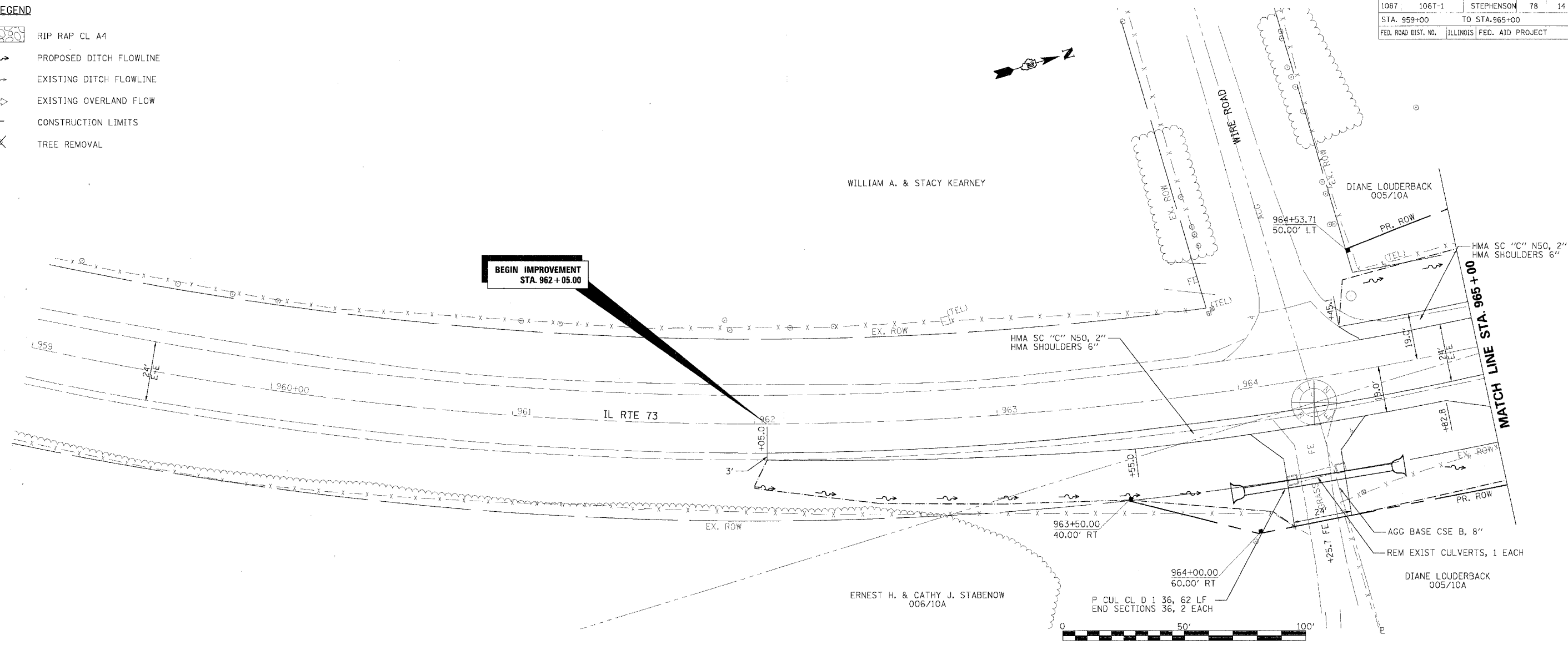
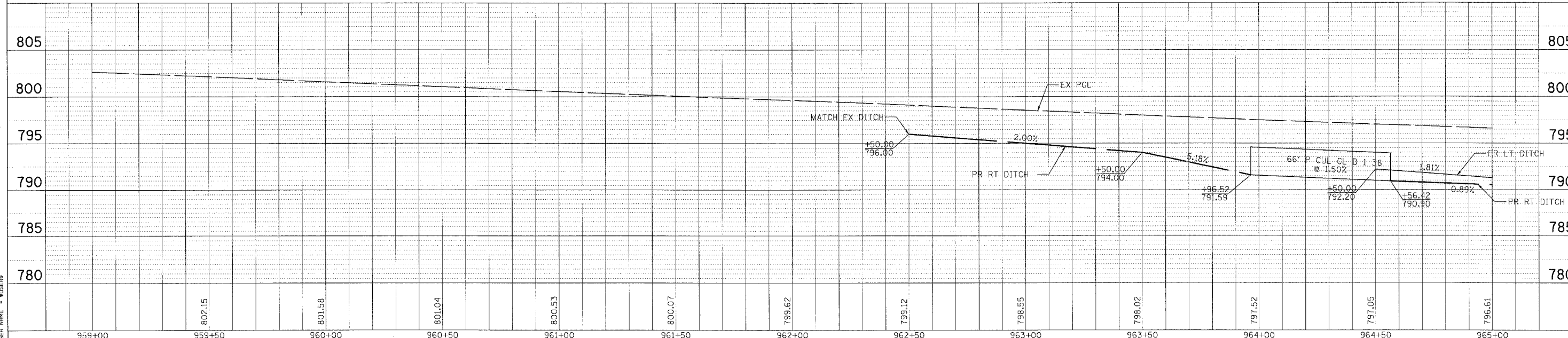
LEGEND

-  RIP RAP CL A4
-  PROPOSED DITCH FLOWLINE
-  EXISTING DITCH FLOWLINE
-  EXISTING OVERLAND FLOW
-  CONSTRUCTION LIMITS
-  TREE REMOVAL

DATE	
PI AN	
DESIGNED	
PLOTTED	
NOTED	
NO. 1	
NO. 2	
NO. 3	
NO. 4	
NO. 5	
NO. 6	
NO. 7	
NO. 8	
NO. 9	
NO. 10	

DATE	
PI AN	
DESIGNED	
PLOTTED	
NOTED	
NO. 1	
NO. 2	
NO. 3	
NO. 4	
NO. 5	
NO. 6	
NO. 7	
NO. 8	
NO. 9	
NO. 10	

PLT DATE = DATE
 FILE NAME = FILE
 PLOTTER = PLOTTER
 USER NAME = USER



PLAN & PROFILE
PROPOSED SN 089-1109