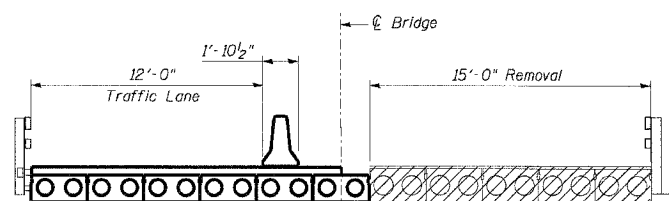


F.A.P. RTE.	SECTION	COUNTY	TOTAL SHEETS	SHEET NO.
308	(104-BY-1BR)	CARROLL	40	8
STA. 542+80		TO STA. 554+50		
FED. ROAD DIST. NO.		ILLINOIS	FED. AID PROJECT	

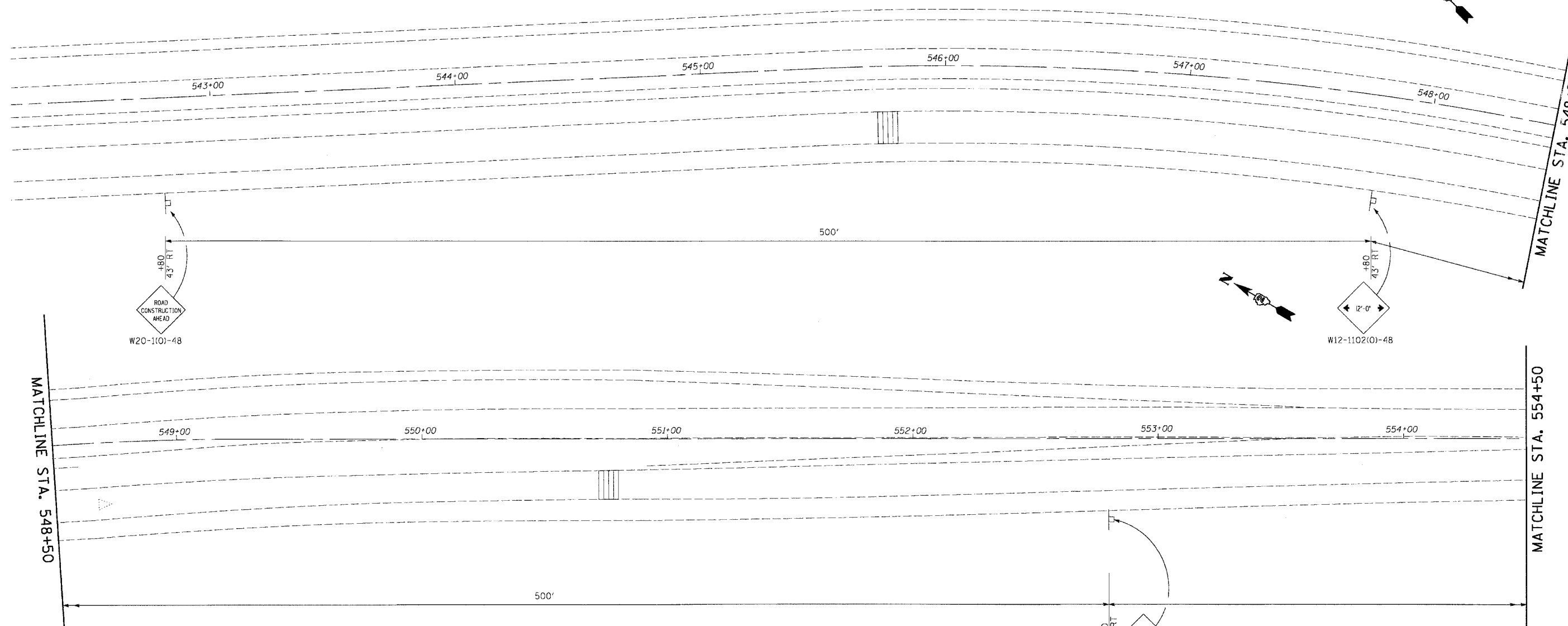
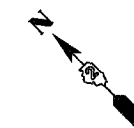


STAGE I TYPICAL SECTION

## STAGE II

PHASE	SEQUENCE OF OPERATIONS					
	A			B		
INTERVAL	1	2	3	4	5	6
EASTBOUND IL RTE 84 LEFT SIGNAL AND RIGHT SIGNAL	G	Y	R	R	R	R
WESTBOUND IL RTE 84 LEFT SIGNAL AND RIGHT SIGNAL	R	R	R	G	Y	R

NOTES: 1. CALL KRISTIE NYDEREK WITH DISTRICT 2 TRAFFIC AT (815) 284-5474 2 WEEKS BEFORE INSTALLING TEMPORARY SIGNAL.  
 2. PROPOSED HOT-MIX ASPHALT SHOULDERS SHALL BE CONSTRUCTED PRIOR TO THE PROPOSED BRIDGE RECONSTRUCTION AND REQUIRED STAGE I AND STAGE II LANE CLOSURES, USING STANDARD DAILY LANE CLOSURES.



MATCHLINE STA. 548+50

MATCHLINE STA. 554+50

### LEGEND

- |                    |                                                      |
|--------------------|------------------------------------------------------|
| WORK AREA          | DRUM WITH STEADY BURNING LIGHT                       |
| SIGN               | TEMPORARY CONCRETE BARRIER                           |
| TYPE III BARRICADE | TEMPORARY RUMBLE STRIP (WHEN SPECIFIED)              |
| TRAFFIC SIGNAL     | DOUBLE VERTICAL PANEL                                |
| DETECTOR LOOPS     | CRYSTAL, BIDIRECTIONAL BARRIER WALL/GUARDRAIL MARKER |
| IMPACT ATTENUATOR  |                                                      |

### NOTES

1. ALL GUARDRAIL MUST BE RE-INSTALLED PRIOR TO STAGE II CONSTRUCTION.

REVISIONS	
NAME	DATE

ILLINOIS DEPARTMENT OF TRANSPORTATION  
**MAINTENANCE OF TRAFFIC**  
**STAGE II**  
 IL-84 OVER A DRAINAGE DITCH  
 FAP ROUTE 308 SECTION (104-BY-1BR)  
 CARROLL COUNTY  
 STATION 566+38  
 STRUCTURE NO. 008-0016  
 VERT. SCALE: HORIZ. DATE 10/10/07  
 DRAWN BY CKL  
 CHECKED BY CAC

PLOT DATE = 10/10/2007  
 FILE NAME = G:\ENR\06-6779-13-1\64D14\CD\CD\SH1088\_Mol\_Stage\_02.dgn  
 USER = JG  
 PLOT SCALE = 1/8"=1'-0"  
 USER NAME = JG