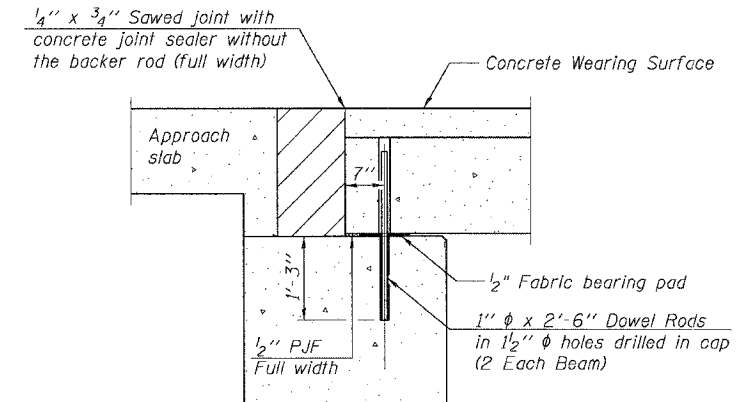
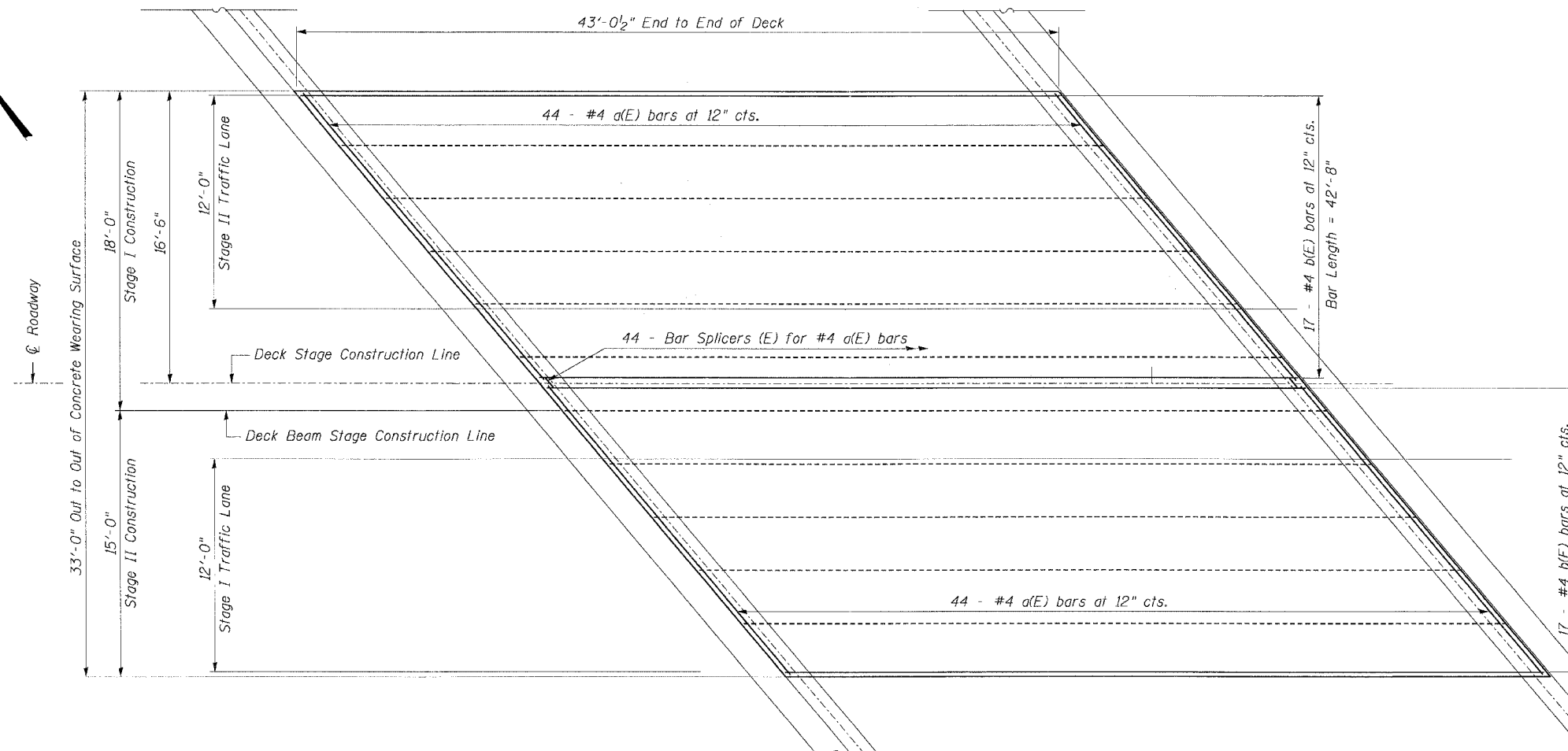


STATE OF ILLINOIS  
DEPARTMENT OF TRANSPORTATION

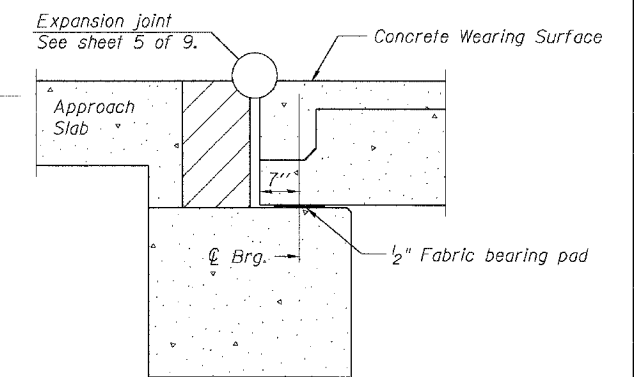
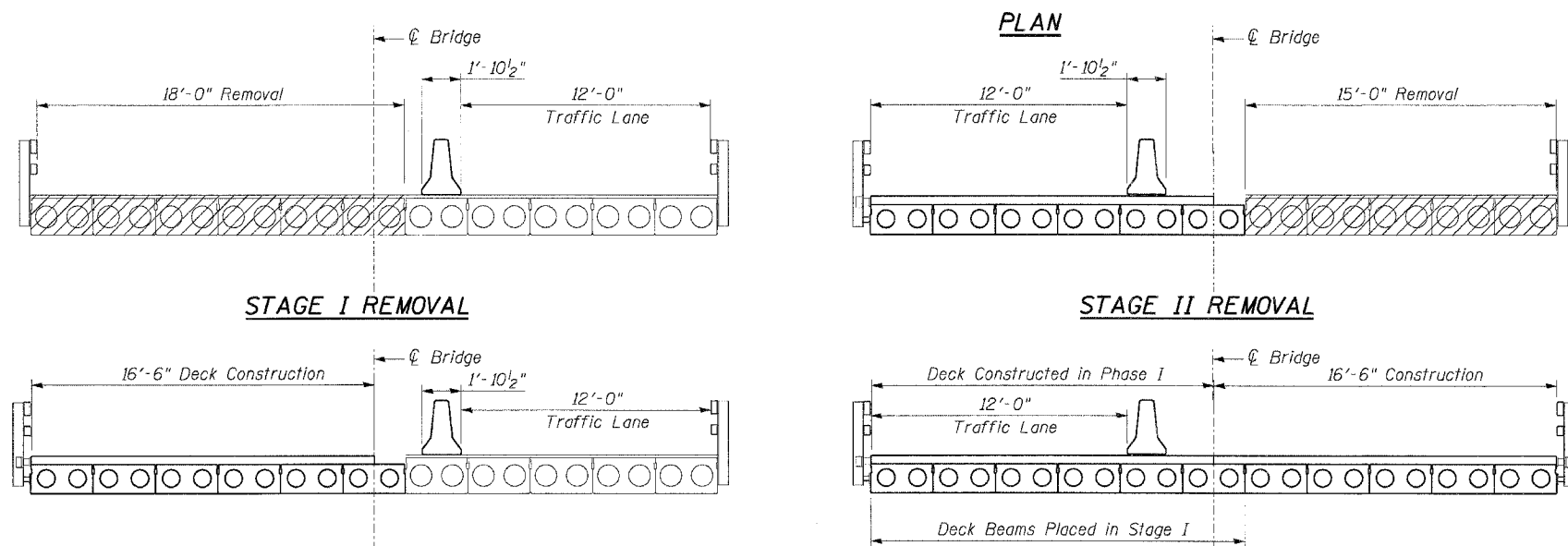
ROUTE NO.	SECTION	COUNTY	TOTAL SHEETS	SHEET NO.	SHEET NO. 2 9 SHEETS
FAP 308	104-BY-1BRD	CARROLL	40	14	
FED. ROAD DIST. NO. 7	ILLINOIS	FED. AID PROJECT-			

Contract #64D14



**SECTION THRU WEST ABUTMENT**

Notes:  
After beams have been erected, holes shall be drilled into substructure and anchor dowels placed. Dowel holes shall be filled with non-shrink grout to top of beam and allowed to cure min. 24 hrs. prior to grouting the shear keys.  
All horizontal dimensions are at right angles to beam ends. Hatched area to be poured after concrete wearing surface is in place.  
See sheet 4 of 9 for bearing pad details.  
Contractor shall burn the existing dowel rods flush with the bearing seat, grind the existing dowel rods smooth, and seal the existing dowel rods with epoxy. The cost of this work is included with Removal of Existing Superstructure.



**SECTION THRU EAST ABUTMENT**

Notes:  
All horizontal dimensions are at right angles to beam ends. Hatched area to be poured after concrete wearing surface is in place.  
See sheet 4 of 9 for bearing pad details.

DESIGNED	GPM
CHECKED	BRT
DRAWN	GPM
CHECKED	BRT

GP-1R (04-04-05)

ILLINOIS DEPARTMENT OF TRANSPORTATION  
**SUPERSTRUCTURE AND STAGING DETAILS**

IL-84 OVER A DRAINAGE DITCH  
FAP ROUTE 308 SECTION (104-BY-1BRD)  
CARROLL COUNTY  
STATION 566+38  
STRUCTURE NO. 008-0016

SCALE: NONE  
DATE 10/10/07