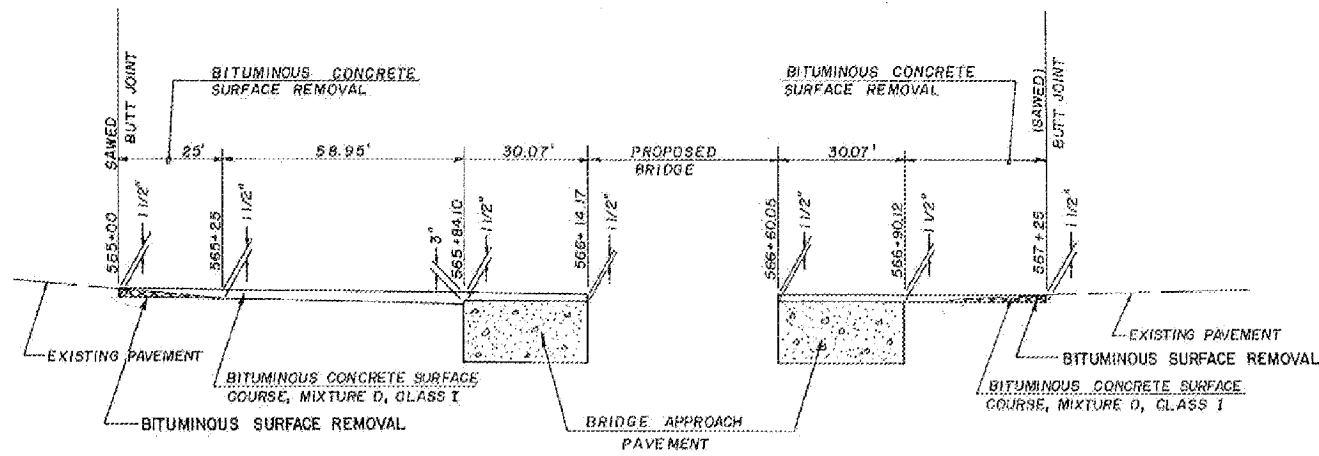


FOR INFORMATION ONLY

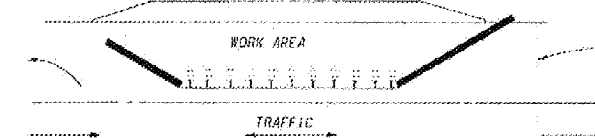


DETAIL OF BITUMINOUS SURFACING

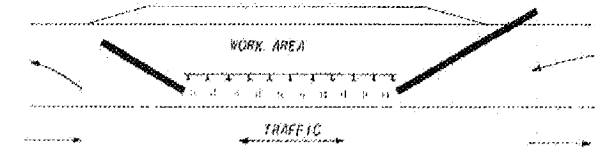
NO SCALE

SPECIAL DETAIL OF SEQUENCE FOR CHANGING FROM STAGE I TO STAGE II TRAFFIC CONTROL

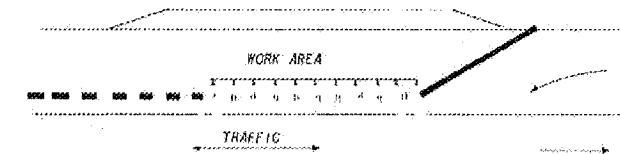
ROUTE NO.	SEC.	COUNTY	TOTAL SHEETS	SHEET NO.
FA 18	104-By-18R	CARROLL	90	31
FHWA REG NO. 4 LINGHS PROJECT				



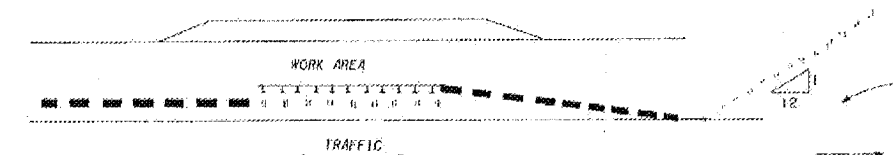
- (A) WITH STAGE I TRAFFIC CONTROL IN PLACE PREPARE & CORE ANCHORAGE FOR STAGE II TEMPORARY BRIDGE RAIL.
(B) SUPPLY TEMPORARY TRAFFIC CONTROL FOR CHANGING FROM STAGE I TO STAGE II TRAFFIC CONTROL.
(SEE SPECIAL PROVISIONS)



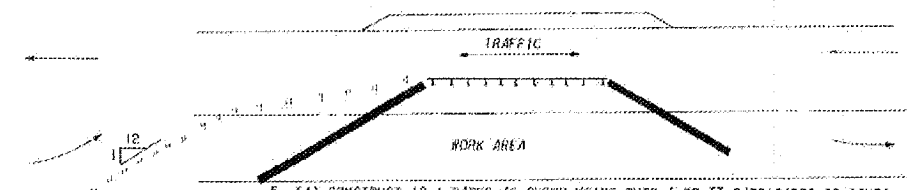
- MOVE TEMPORARY BRIDGE RAIL TO STAGE II POSITION, AND PLACE TYPE I OR II BARRICADES OR CONES AS SHOWN.



- MOVE DEPARTING TAPER OF TEMPORARY CONCRETE BARRIERS AS SHOWN AND SUPPLY ADDITIONAL BARRIER UNITS REQUIRED FOR STAGE II.



- (A) CONSTRUCT 12:1 TAPER AS SHOWN USING TYPE I OR II BARRICADES OR CONES.
(B) MOVE APPROACHING TAPER OF TEMPORARY CONCRETE BARRIERS AS SHOWN AND SUPPLY ADDITIONAL BARRIER UNITS REQUIRED FOR STAGE II.
(C) REMOVE TAPER CONSTRUCTED IN STEP 4 (A).



- (A) CONSTRUCT 12:1 TAPER AS SHOWN USING TYPE I OR II BARRICADES OR CONES.
(B) MOVE TEMPORARY CONCRETE BARRIERS TO FINAL STAGE II POSITION AND ANCHOR INTO PLACE.
(C) RELOCATE TEMPORARY TRAFFIC SIGNALS TO STAGE II POSITION.
(D) REMOVE TAPER CONSTRUCTED IN STEP 5 (A) & ACTIVATE STAGE II TRAFFIC CONTROL.

LEGEND

- ANCHORAGE FOR TEMPORARY BRIDGE RAIL
- TYPE I OR II BARRICADES OR CONES
- TEMPORARY CONCRETE BARRIERS IN STAGE POSITION
- INTERMEDIATE LOCATION OF TEMPORARY CONCRETE BARRIERS

NOTE: (A) STEPS 2 THROUGH 5 INCLUSIVE SHALL BE COMPLETED DURING ONE DAYLIGHT PERIOD.
(B) COMPATIBLE STEPS 2, 3 AND 4(A) ARE SHOWN FOR CLARITY AND MAY BE ACCOMPLISHED SIMULTANEOUSLY.
(C) USE ONE BARRICADE OR CONE PER FOOT OF LANE WIDTH WHEN CONSTRUCTING 12:1 TAPERS IN STEPS 4(A) & 5(A).

SPECIAL DETAILS