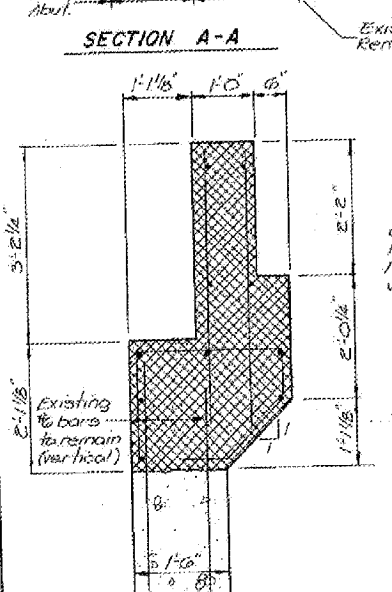
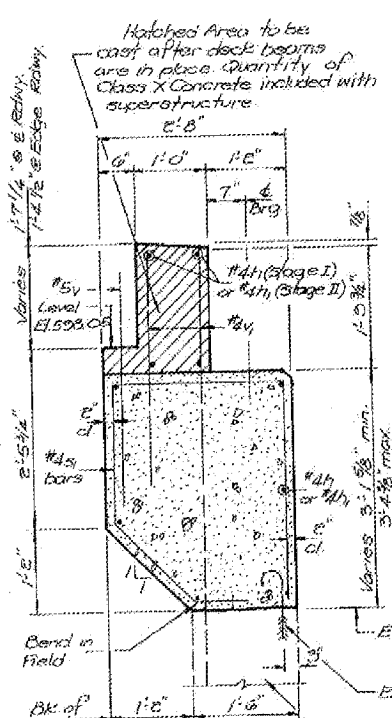


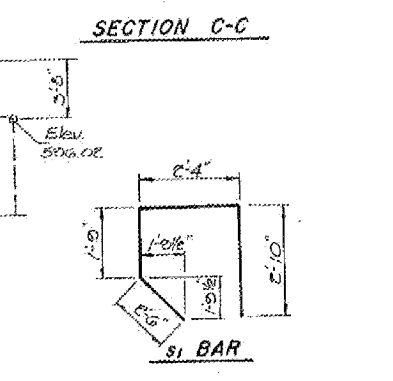
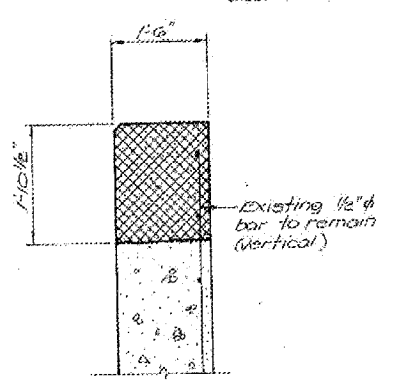
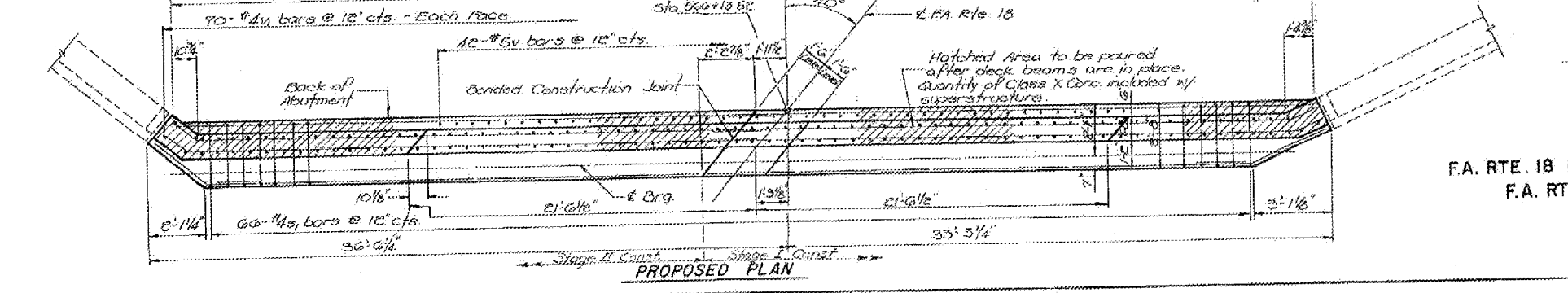
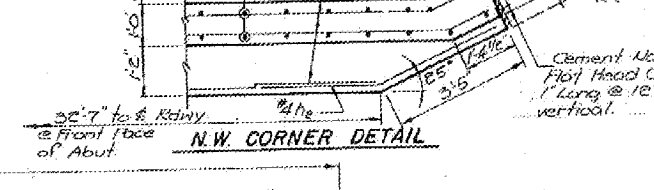
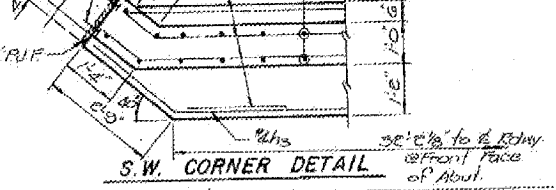
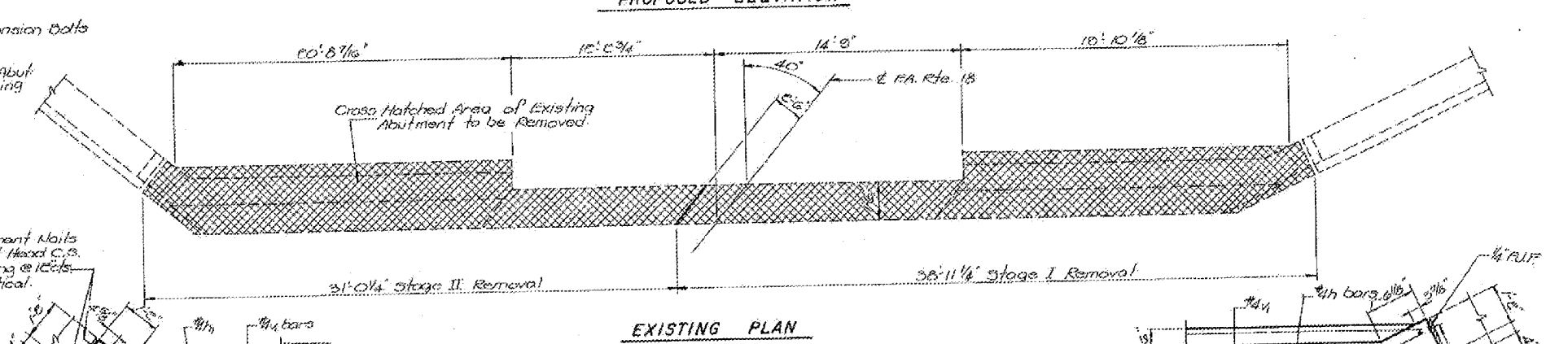
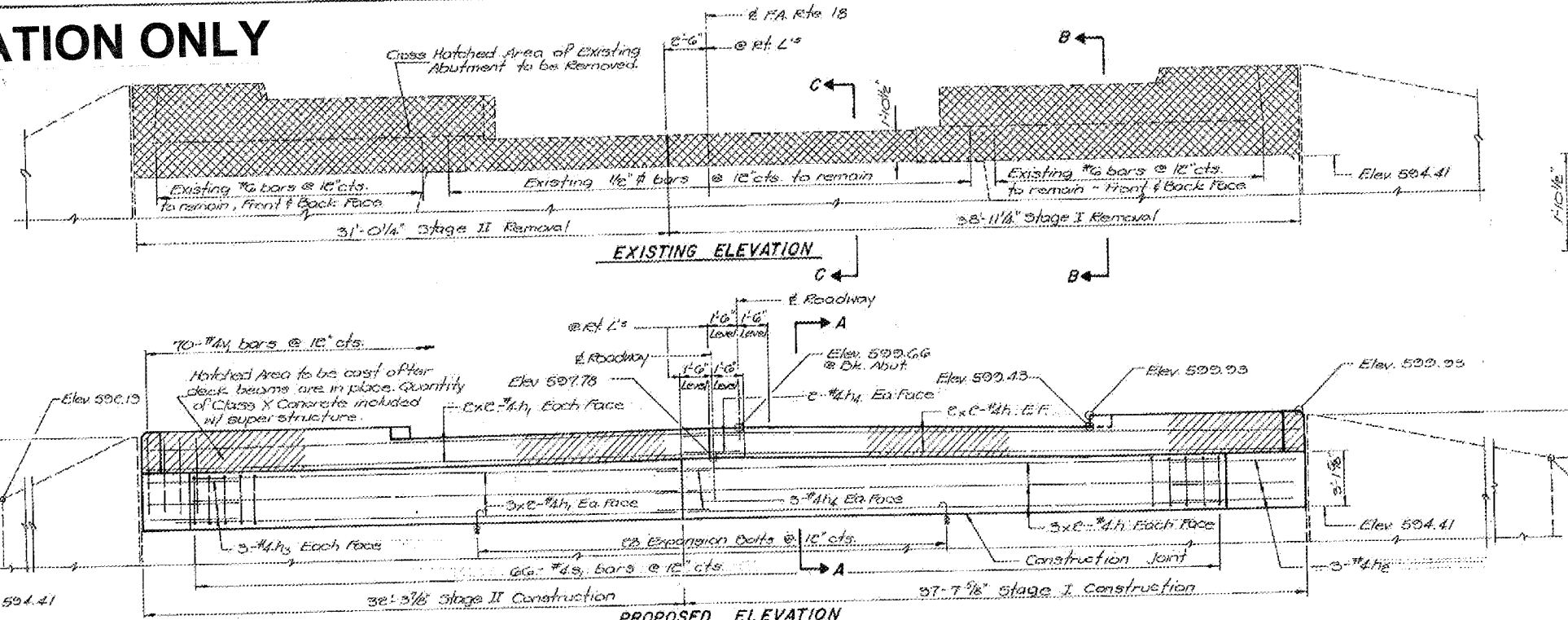
FOR INFORMATION ONLY

ROUTE NO.	SECTION	COUNTY	TOTAL SHEETS	SHEET NO.
F.A. 18	104-BY-1BR	CARROLL	40	38

SHEET 7 OF 9



DESIGNED	DHC
CHECKED	KLF
DRAWN	JNB
CHECKED	KLF



BILL OF MATERIAL

Bar	No	Size	Length	Shape
h	12	#4	15'-8"	
h	10	#4	17'-0"	
h2	3	#4	6'-0"	
h3	3	#4	5'-0"	
h4	6	#4	3'-4"	
S1	66	#4	0'-5"	(1)
v	42	#5	3'-4"	
v	140	#4	4'-4"	
Class X Concrete		CY	22.3	
Reinforcement Bars		Lbs	1340	
Cons. Removal		CY	15.4	
Exp. Bolts 3/4"		EA	85	

*(See note sheet 6.)

Note: Volume of Class X Concrete & weight of Reinforcement Bars included in hatched area of proposed Abutment are listed with quantities for the superstructure on sheet 2.

WEST ABUTMENT
 F.A. RTE. 18 OVER TRIB. OF MISSISSIPPI RIVER
 F.A. RTE. 18, SECTION 104 BY-1BR
 CARROLL COUNTY
 STA. 566 + 37.11

DATE: 6/16/52