

SQUAD LEADER: FAITH DUNCAN  
815-284-5364

PROJECT ENGINEER: REBECCA MARRUFFO

F.A.P. RTE.	SECTION	COUNTY	TOTAL SHEETS	SHEET NO.
646	(5BR-1)D	CARROLL	52	1

STATE OF ILLINOIS  
DEPARTMENT OF TRANSPORTATION  
DIVISION OF HIGHWAYS

# PROPOSED HIGHWAY PLANS

FAP ROUTE 646 (IL 40)  
SECTION (5BR-1)D

CARROLL COUNTY  
C-92-015-08

D-92-069-07

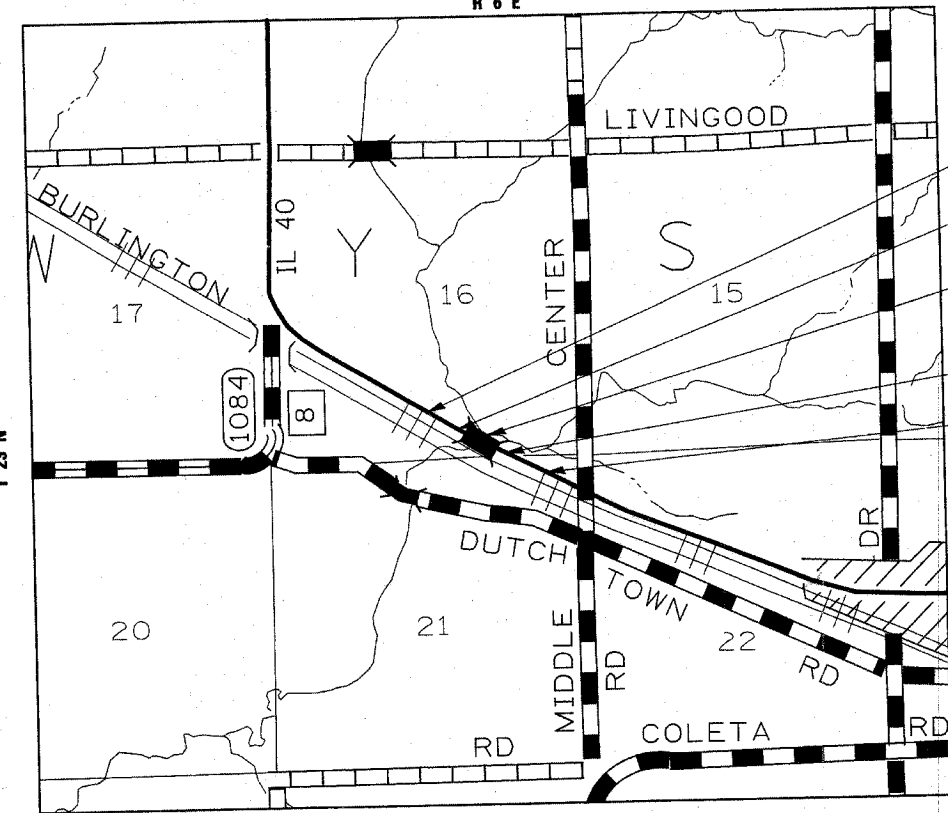


**INDEX OF SHEETS**

1	COVER SHEET
2	SUMMARY OF QUANTITIES
3	GENERAL NOTES
4,5	TYPICAL SECTIONS
6,7	SCHEDULE OF QUANTITIES
8	HORIZONTAL AND VERTICAL CONTROL
9-11	PLAN AND PROFILE
12-19	BRIDGE PLANS
20-22	EXISTING BRIDGE PLANS - INFORMATION ONLY
23,24	PERIMETER EROSION CONTROL BARRIER DETAIL
25,26	STAGING DETAILS
27	DETAIL OF HOT-MIX ASPHALT SHOULDER AT GUARDRAIL (23.4)
	DELINEATOR AND POST (37.4)
	INFORMATIONAL WARNING SIGN (39.4)
	TYPICAL BENCHING DETAIL ON EXISTING EMBANKMENT (50.4)
28	LETTERING FOR NAME PLATE (89.4)
	STOP LINE SIGN FOR TEMPORARY SIGNALS (99.4)
	EROSION CONTROL DETAILS FOR SILT FENCE (29.2)
29	WITNESS MARKER & PERMANENT SURVEY MARKERS, TYPE II (66.2)
30,31	TYPICAL PAVEMENT MARKINGS (41.1)
32-52	IL 40 CROSS SECTIONS

**STATE STANDARDS**

001001-01	AREAS OF REINFORCEMENT BARS
001006	DECIMAL OF AN INCH AND A FOOT
280001-04	TEMPORARY EROSION CONTROL SYSTEMS
515001-02	NAME PLATE FOR BRIDGES
630001-07	STEEL PLATE BEAM GUARDRAIL
630201-05	PCC/BITUMINOUS STABILIZATION AT STEEL PLATE BEAM GUARDRAIL
630301-04	SHOULDER WIDENING FOR TYPE 1 (SPECIAL) GUARDRAIL TERMINALS
631032-03	TRAFFIC BARRIER TERMINAL, TYPE 6A
635001	DELINEATORS
635006-02	REFLECTOR AND TERMINAL MARKER PLACEMENT
635011-01	REFLECTOR MARKER AND MOUNTING DETAILS
667101	PERMANENT SURVEY MARKERS
701006-02	TYPICAL APPLICATION OF TRAFFIC CONTROL STANDARD
701201-02	TYPICAL APPLICATION OF TRAFFIC CONTROL STANDARD
701301-02	TYPICAL APPLICATION OF TRAFFIC CONTROL STANDARD
701306-01	TYPICAL APPLICATION OF TRAFFIC CONTROL STANDARD
701311-02	TYPICAL APPLICATION OF TRAFFIC CONTROL STANDARD
701321-09	TYPICAL APPLICATION OF TRAFFIC CONTROL STANDARD
701901	TRAFFIC CONTROL DEVICES
704001-04	TEMPORARY CONCRETE BARRIER
720011	METAL POST FOR SIGNS, MARKERS AND DELINEATORS
728001	TELESCOPING STEEL SIGN SUPPORT
729001	APPLICATIONS OF TYPE A & B METAL POSTS (FOR SIGNS AND MARKERS)
780001-01	TYPICAL PAVEMENT MARKINGS
886001	DETECTOR LOOP INSTALLATIONS
886006	TYPICAL LAYOUT FOR DETECTION LOOPS



IMPROVEMENT ENDS  
STA 251+79.15

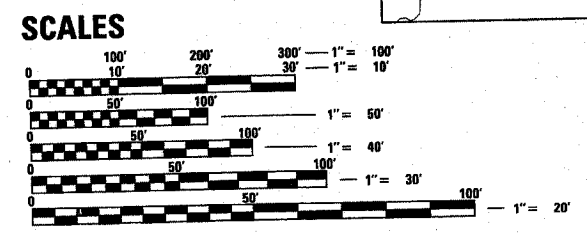
SECTION ENDS  
STA 249+02.71

SECTION (5BR-1)D  
INCLUDES THE REMOVAL AND REPLACEMENT  
OF SIX BEAMS ON THE EXISTING STRUCTURE  
SN-008-0014 OVER OTTER CREEK.

SECTION BEGINS  
STA 247+39.04

IMPROVEMENT BEGINS  
STA 243+54.27

LOCATION OF SECTION INDICATED THUS:



FULL SIZE PLANS HAVE BEEN PREPARED USING STANDARD ENGINEERING SCALES. REDUCED SIZED PLANS WILL NOT CONFORM TO STANDARD SCALES. IN MAKING MEASUREMENTS ON REDUCED PLANS, THE ABOVE SCALES MAY BE USED.

J.U.L.I.E.  
JOINT UTILITY LOCATION INFORMATION FOR EXCAVATION  
1-800-892-0123

WYSOX TOWNSHIP SECTION 16, 21  
CONTRACT NO. 64D29

GROSS LENGTH OF PROJECT = 824.88 LIN FT = 0.15 MI  
NET LENGTH OF PROJECT = 824.88 LIN FT = 0.15 MI

STATE OF ILLINOIS  
DEPARTMENT OF TRANSPORTATION  
DIVISION OF HIGHWAYS

SUBMITTED \_\_\_\_\_ 20  
*Ang F. Ryan*  
DEPUTY DIRECTOR OF HIGHWAYS, REGION ENGINEER

December 7, 20 07  
*Eric E. Horn*  
ENGINEER OF DESIGN AND ENVIRONMENT

December 7, 20 07  
*Christine M. Reed*  
DIRECTOR OF HIGHWAYS, CHIEF ENGINEER

**PRINTED BY THE AUTHORITY  
OF THE STATE OF ILLINOIS**

**REGION 2, DISTRICT 2  
DIXON**