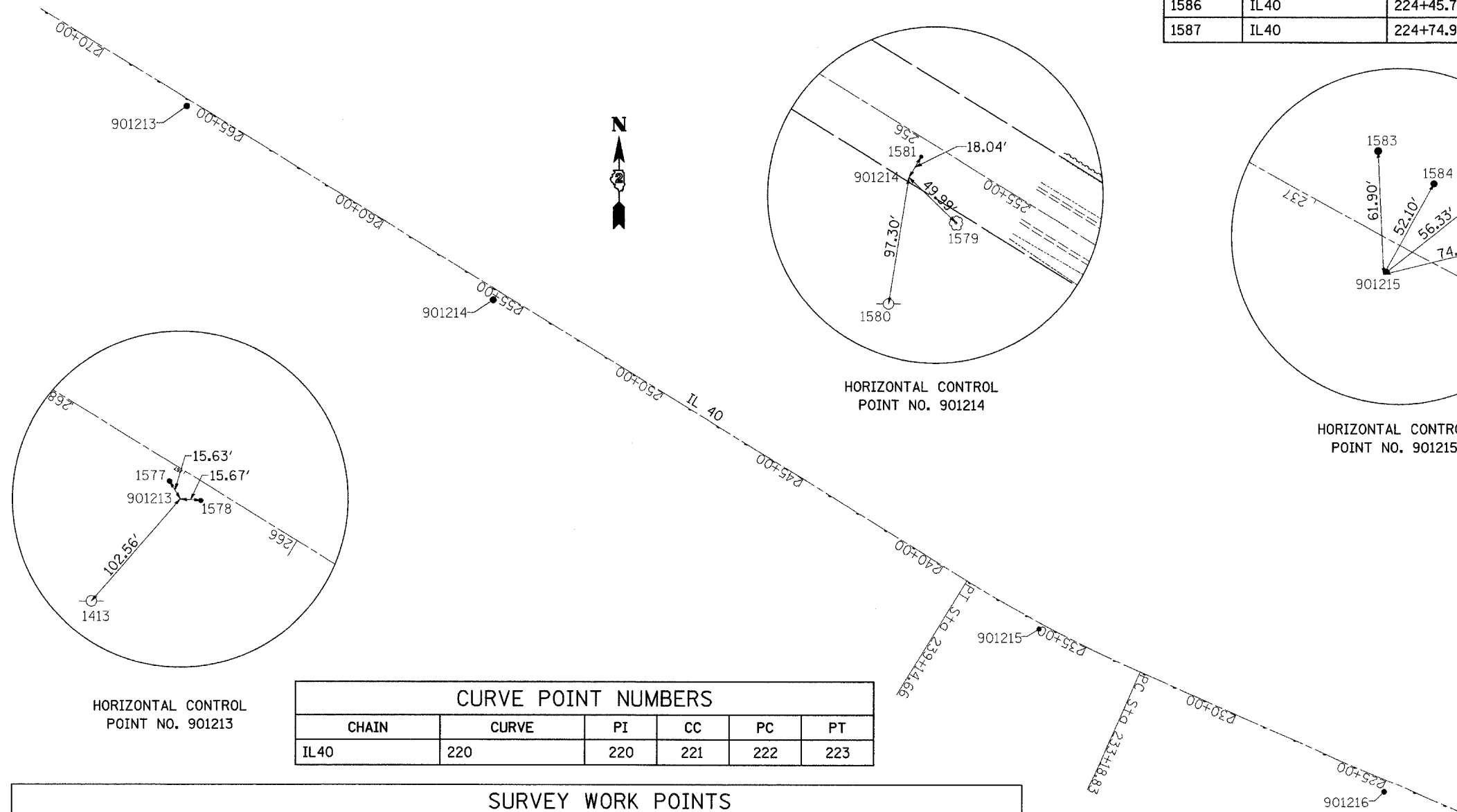


HORIZONTAL CONTROL POINTS							
POINT	NORTH	EAST	ELEVATION	CHAIN	STATION	OFFSET	DESCRIPTION
901213	1934340.8550	2391933.7820	744.3090	IL40	266+92.2815	19.7661' LT	PHOTO CONTROL H. & V., PIN
901214	1933754.0160	2392866.8180	725.6780	IL40	255+90.0962	30.8864' LT	PHOTO CONTROL H. & V., PIN
901215	1932757.2300	2394529.7770	734.1020	IL40	236+52.2472	16.7246' LT	PHOTO CONTROL H. & V., PIN
901216	1932258.6220	2395580.6950	734.3790	IL40	224+90.4352	36.0203' LT	PHOTO CONTROL H. & V., PIN

BENCH MARKS							
POINT	NORTH	EAST	ELEVATION	CHAIN	STATION	OFFSET	DESCRIPTION
1413	1934263.6210	2391866.2960	745.703	IL40	267+09.3092	120.9072' LT	TELEGRAPH POLE, 60D NAIL
1415	1932774.8240	2394602.1030	740.684	IL40	235+96.3701	32.5680' RT	R.O.W. MARKER, TOP

REFERENCE TIES				
POINT	CHAIN	STATION	OFFSET	DESCRIPTION
1577	IL40	267+06.2031	12.6691' LT	PAVEMENT, SHINER
1578	IL40	266+78.3794	12.5293' LT	PAVEMENT, SHINER
1579	IL40	255+41.4521	41.7389' LT	TREE DECIDUOUS
1580	IL40	255+52.9161	120.7972' LT	TELEGRAPH POLE, SHINER
1581	IL40	255+90.2340	12.8476' LT	PAVEMENT - EDGE, BITUMINOUS
1582	IL40	236+29.2359	34.7085' RT	FENCE POST, SHINER
1583	IL40	236+84.1715	36.3464' RT	FENCE POST, SHINER
1584	IL40	236+51.3316	35.3698' RT	FENCE POST, SHINER
1585	IL40	225+04.2212	119.6745' LT	TELEGRAPH POLE, SHINER
1586	IL40	224+45.7019	39.701' LT	POWER POLE, SHINER
1587	IL40	224+74.9264	66.6067' LT	GUARDRAIL STEEL PLATE BEAM, END



Beginning chain D_IL40 description

Point D213 N 1,930,662.1564 E 2,399,288.7668 Sta 184+53.4559
 Course from D213 to PC 220 293° 48' 17.7278" Dist 4,865.3789'

Curve Data

 Curve 220
 P.I. Station 236+17.2048 N 1,932,746.3690 E 2,394,564.3240
 Delta = 7° 47' 06.4551" (RT)
 Degree = 1° 18' 23.8332"
 Tangent = 298.3700'
 Length = 595.8216'
 Radius = 4,385.0366'
 External = 10.1392'
 Long Chord = 595.3634'
 Mid. Ord. = 10.1158'
 P.C. Station 233+18.8348 N 1,932,625.9397 E 2,394,837.3102
 P.T. Station 239+14.6564 N 1,932,902.6665 E 2,394,310.1671
 C.C. N 1,936,637.9193 E 2,396,607.2159

Course from PT 220 to D232 301° 35' 24.1829" Dist 4,139.5166'

Point D232 N 1,935,071.1026 E 2,390,784.0527 Sta 280+54.1730

Ending chain D_IL40 description

CURVE POINT NUMBERS					
CHAIN	CURVE	PI	CC	PC	PT
IL40	220	220	221	222	223

SURVEY WORK POINTS							
POINT	NORTH	EAST	ELEVATION	CHAIN	STATION	OFFSET	DESCRIPTION
1001	1933308.0073	2393624.5547	706.096	IL40	247+11.0062	13.8733' LT	TRAVERSE STATION, NAIL
1002	1933140.9619	2393974.5793	710.761	IL40	243+25.3443	27.1906' RT	TRAVERSE STATION, NAIL
1003	1933361.3894	2393627.5088	699.338	IL40	247+36.4534	33.1460' RT	BILL HOLT PIN AND CAP