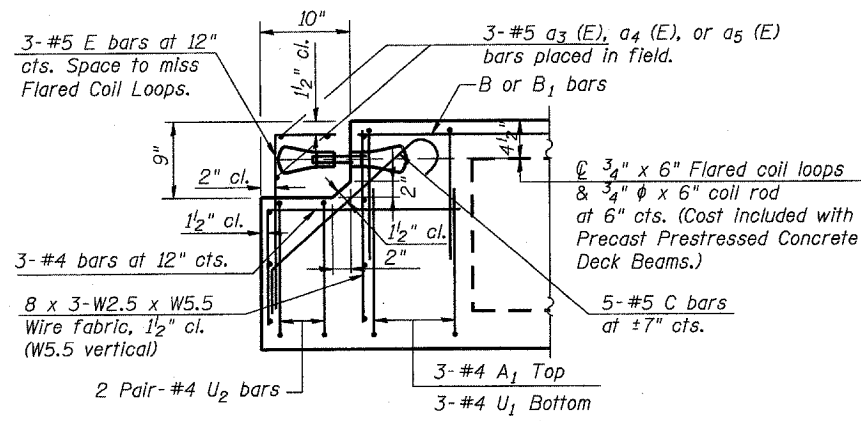
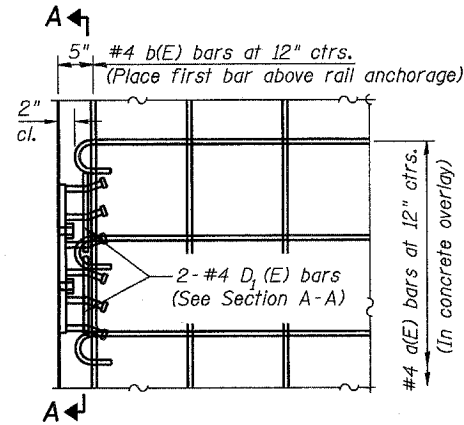


STATE OF ILLINOIS
DEPARTMENT OF TRANSPORTATION

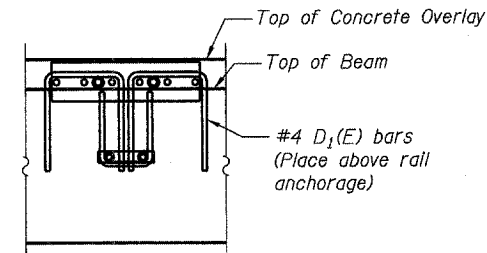
ROUTE NO.	SECTION	COUNTY	SHEET	SHEET NO.
F.A.P. 646		CARROLL	15	8
FED. ROAD DIST. NO. 7	ILLINOIS	FED. AID PROJECT-		SHEETS



END ELEVATION
(Expansion End)

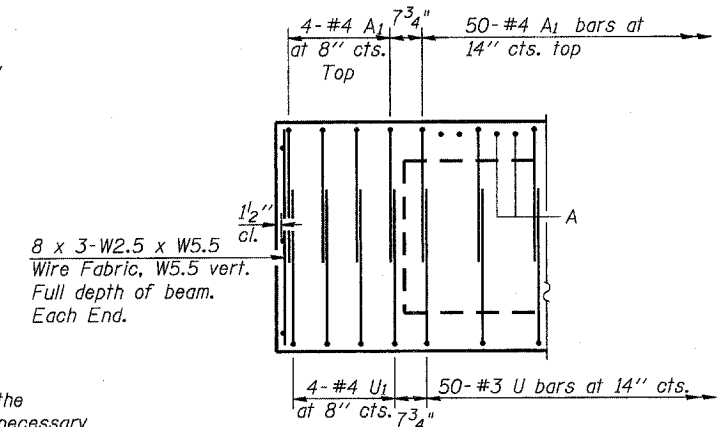


PARTIAL DECK PLAN AT RAIL ANCHORAGE

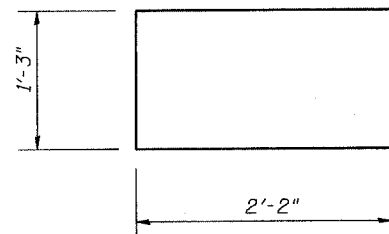


SECTION A-A

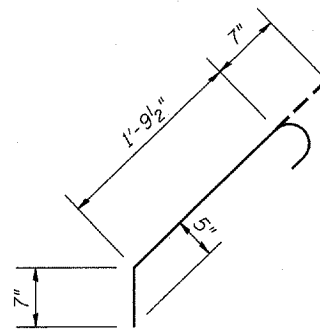
The rail anchorage shall be cast with the beam and the wearing surface shall be cast in the field. Formwork necessary for the wearing surface may be secured utilizing the bottom rail anchorage inserts and/or additional inserts cast into the beam. Drilling into the beam will not be permitted.



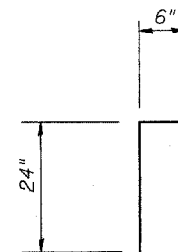
END ELEVATION
(Fixed End)



BAR U₂



BAR C



BAR E

Note: Transverse tie rods are not required at block-out end of beams.
See sheet 3 of 8 for additional beam information.

DESIGNED	DFM
CHECKED	CH
DRAWN	MV
CHECKED	DFM

DECK BEAM DETAILS
F.A.P. 646 (IL RTE 40)
CARROLL COUNTY
STRUCTURE NO. 008-0014
SHEET 15 OF 52