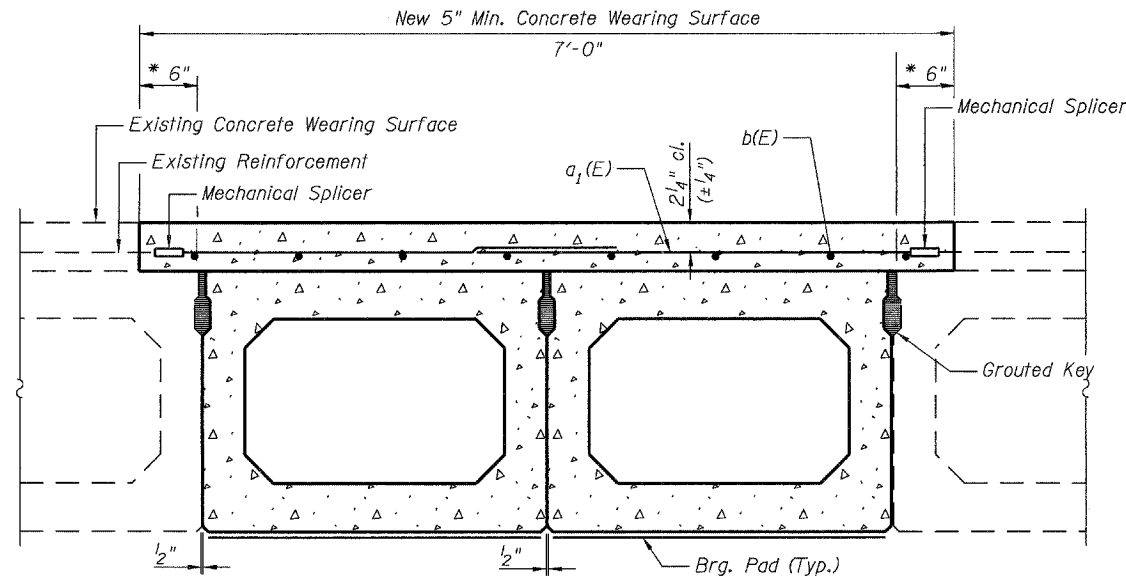


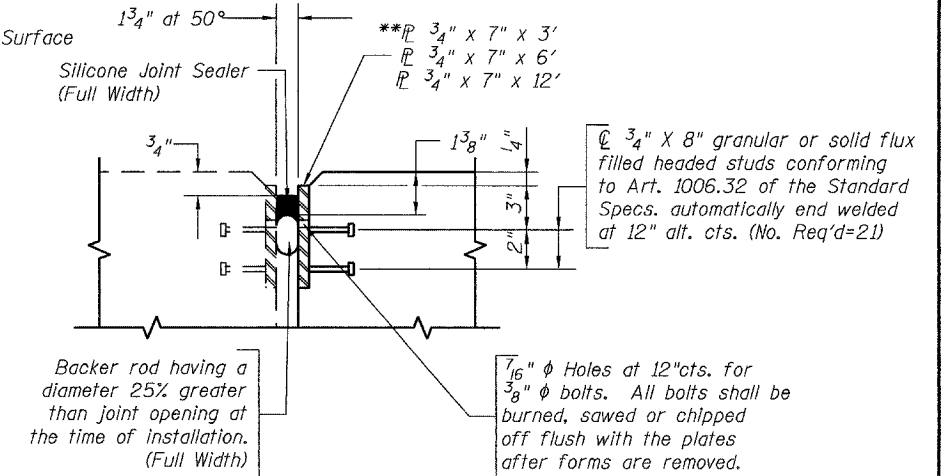
SECTION THRU BEAM 1

* Limits of 5" min. Concrete Wearing Surface Removal. Cost Included with Concrete Removal.



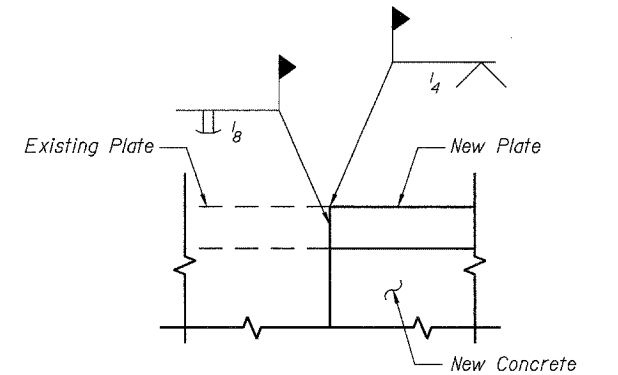
SECTION THRU BEAMS 4 & 5

* Limits of 5" min. Concrete Wearing Surface Removal. Cost included with Concrete Removal.



SILICONE JOINT SEAL

**After fabrication, all surfaces of the steel P's shall be painted with the inorganic zinc rich primer per AASHTO M300, Type 1. Cost of furnishing and erecting and painting the structural steel is included with Silicone Joint Sealer.



ELEVATION JOINT PLATE WELD

Cost Included with Silicone Joint Sealer

BILL OF MATERIALS

See Sheet 6 of 8.

SUPERSTRUCTURE DETAILS

F.A.P. 646 (IL RTE 40)
CARROLL COUNTY
STRUCTURE NO. 008-0014
SHEET 16 OF 52

DESIGNED	DFM
CHECKED	CH
DRAWN	MV
CHECKED	DFM