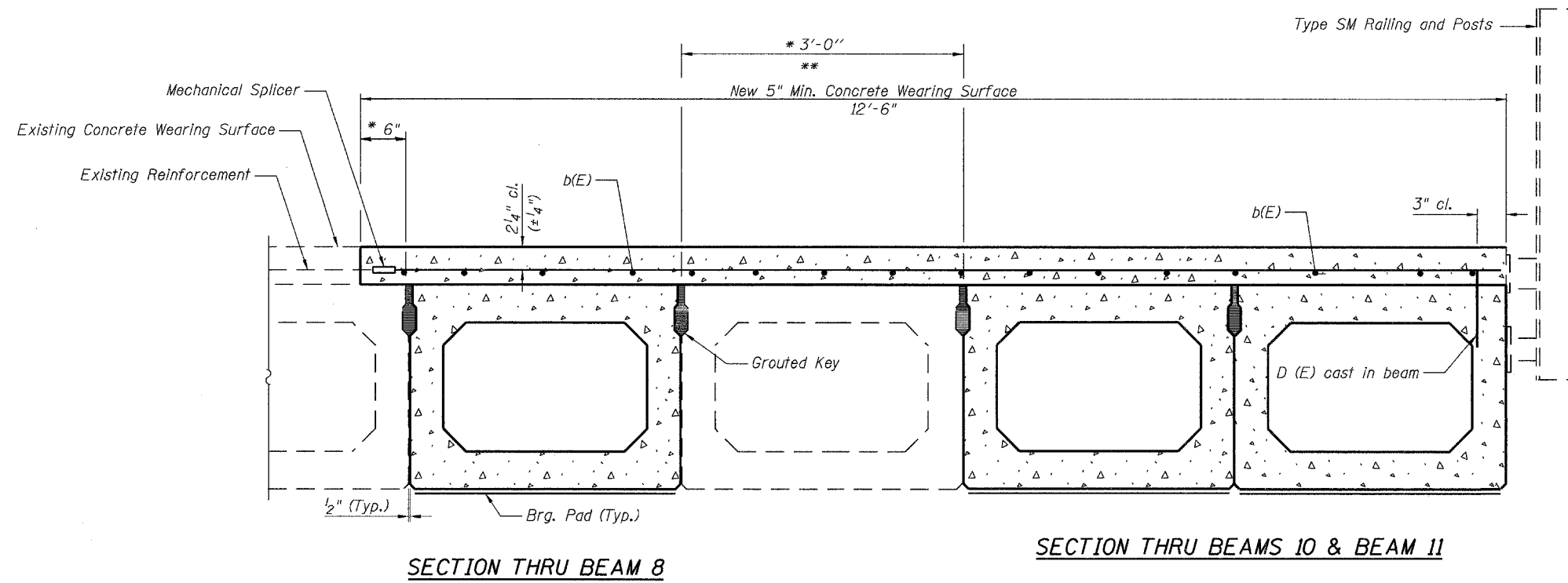


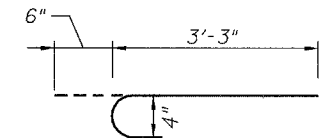
STATE OF ILLINOIS
DEPARTMENT OF TRANSPORTATION

ROUTE NO. F.A.P. 646	SECTION -	COUNTY CARROLL	TOTAL SHEETS 8	SHEET NO. 17	SHEET NO. 6 8 SHEETS
FED. ROAD DIST. NO. 7		ILLINOIS		FED. AID PROJECT-	

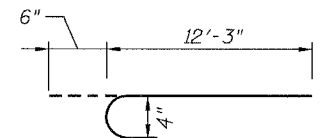


MIN. BAR LAP

#4 bar = 1'-4"
#5 bar = 1'-8"



a₁(E) BAR



a₂(E) BAR

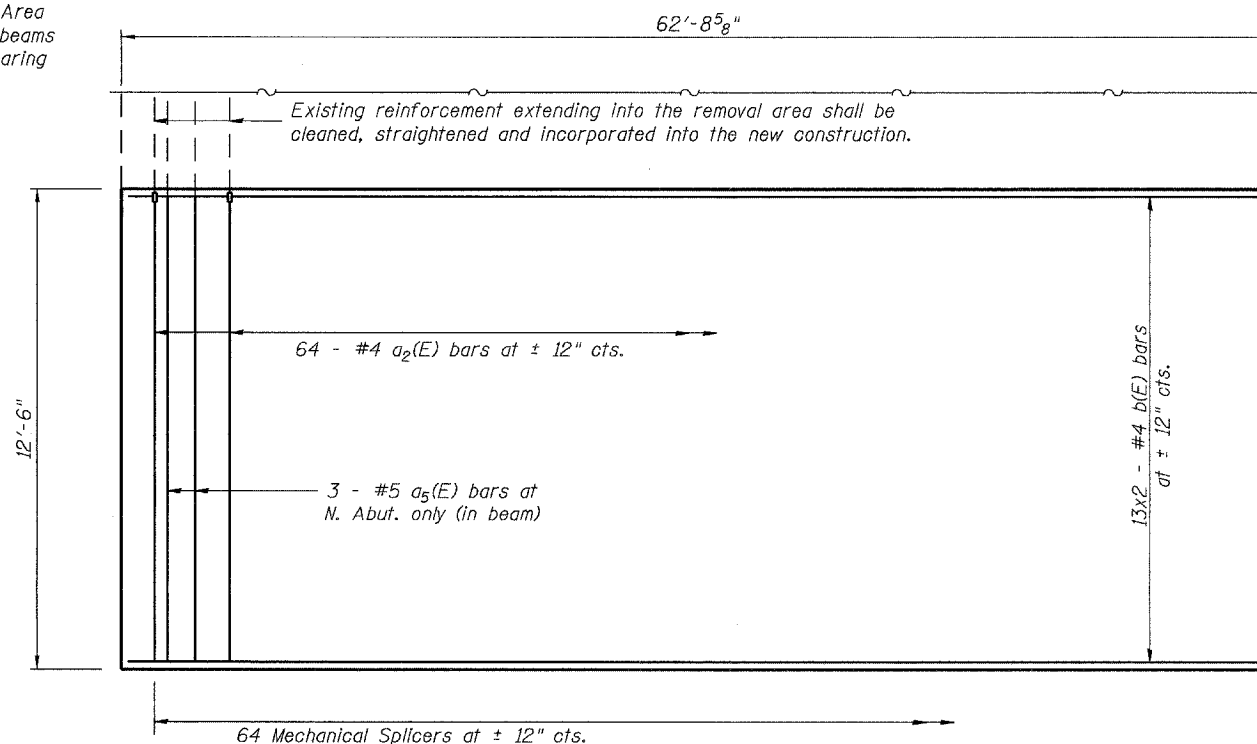
* Limits of 5" min. Concrete Wearing Surface Removal. Cost included with Concrete Removal.

** Remove a 9" x 10" blockout area at expansion end of Beam 9 to allow placement of #5 a₅(E) bars. Existing Reinforcement extending into the removal area shall be cleaned straightened and incorporated into the new construction. Cost Included with Concrete Removal. Area to be filled with Class BS Concrete after the new beams have been installed. Cost included with Concrete Wearing Surface.

BILL OF MATERIALS

Bar	No.	Size	Length	Shape
a(E)	64	#4	3'-9"	
a ₁ (E)	128	#4	4'-2"	
a ₂ (E)	64	#4	12'-9"	
a ₃ (E)	3	#5	2'-9"	
a ₄ (E)	3	#5	5'-9"	
a ₅ (E)	3	#5	11'-9"	
b(E)	50	#4	32'-1"	
Reinforcement Bars, Epoxy Coated			Pound	2200
Conc. Wearing Surface			Sq. Yd.	160.3
Concrete Removal			Cu. Yd.	5.3
Mechanical Splicers			Each	256

Bars indicated thus 42 x 2-#4 etc. Indicates 42 line of bars with 2 lengths per line.



PLAN BEAMS 8 to 11

SUPERSTRUCTURE DETAILS
F.A.P. 646 (IL RTE 40)
CARROLL COUNTY
STRUCTURE NO. 008-0014
SHEET 17 OF 52

DESIGNED	DFM
CHECKED	CH
DRAWN	MV
CHECKED	DFM