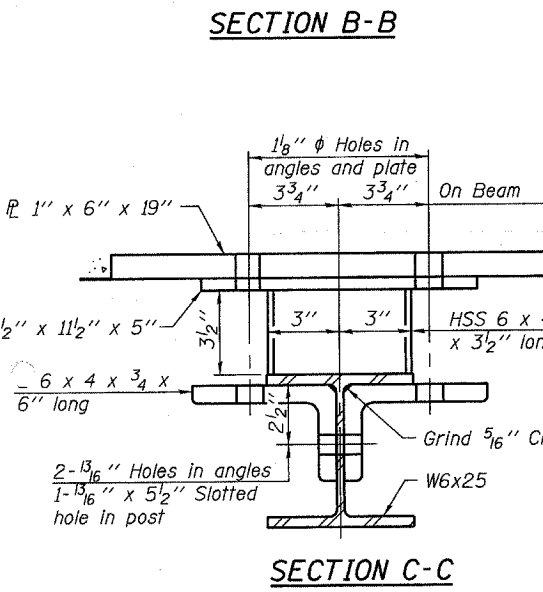
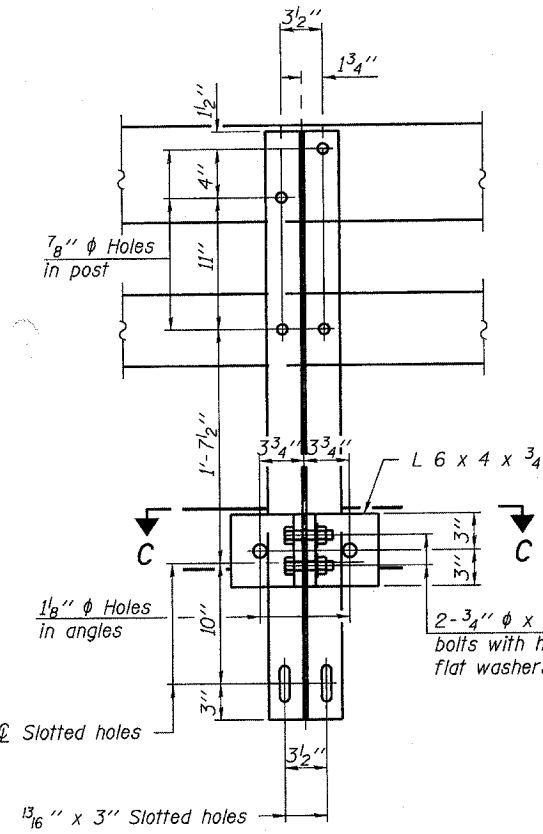
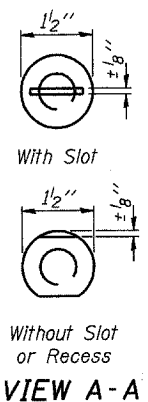
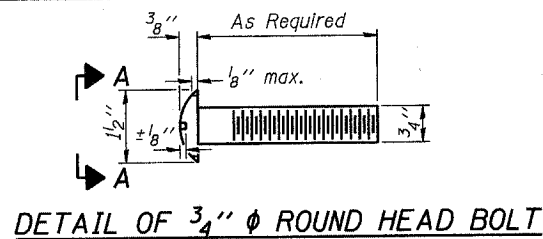


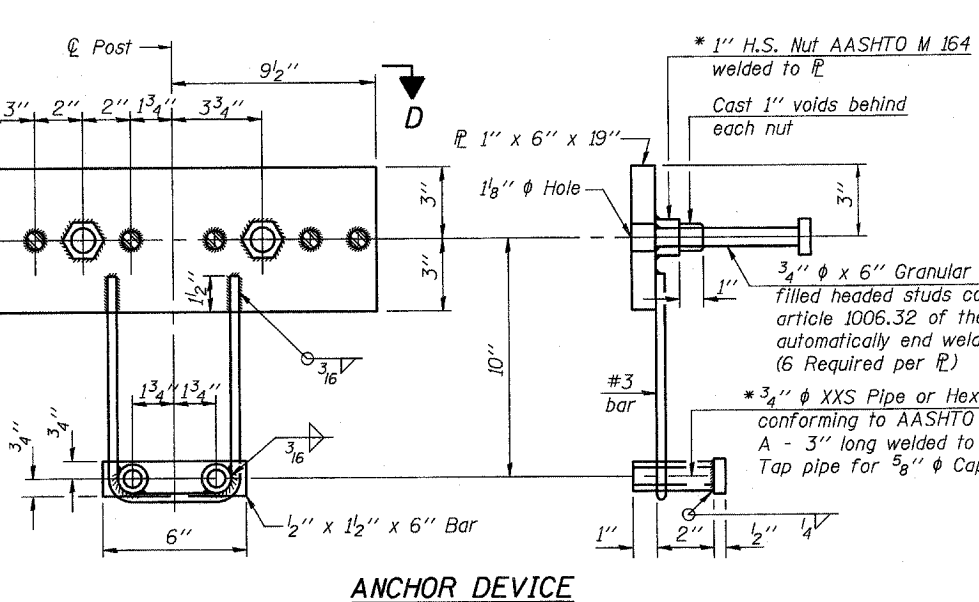
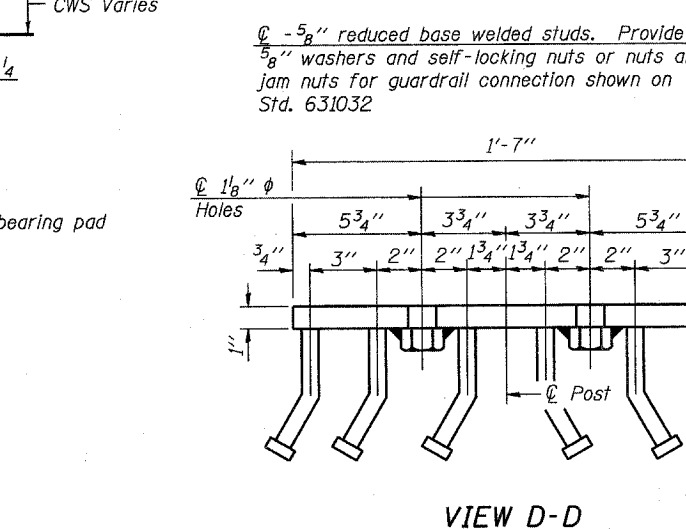
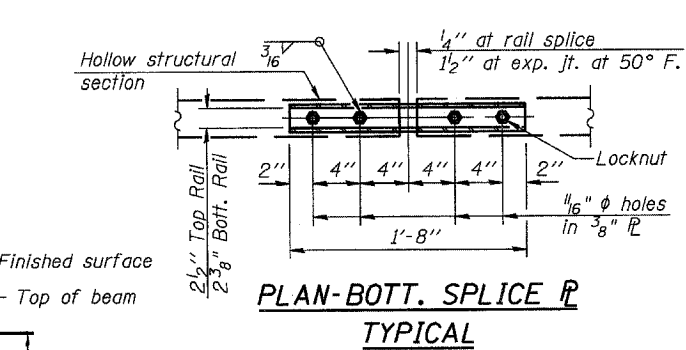
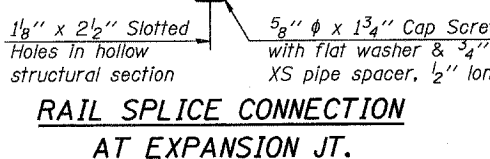
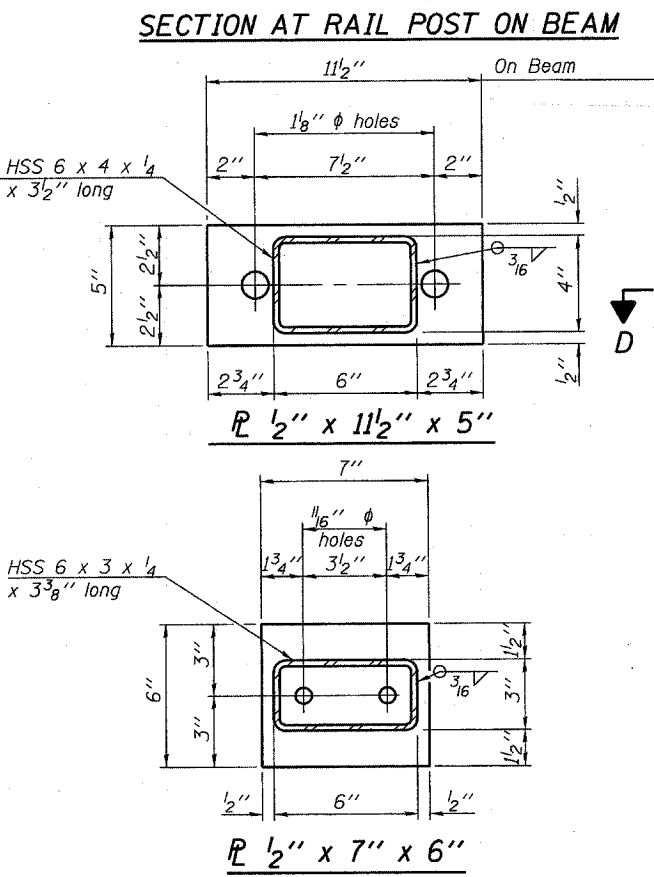
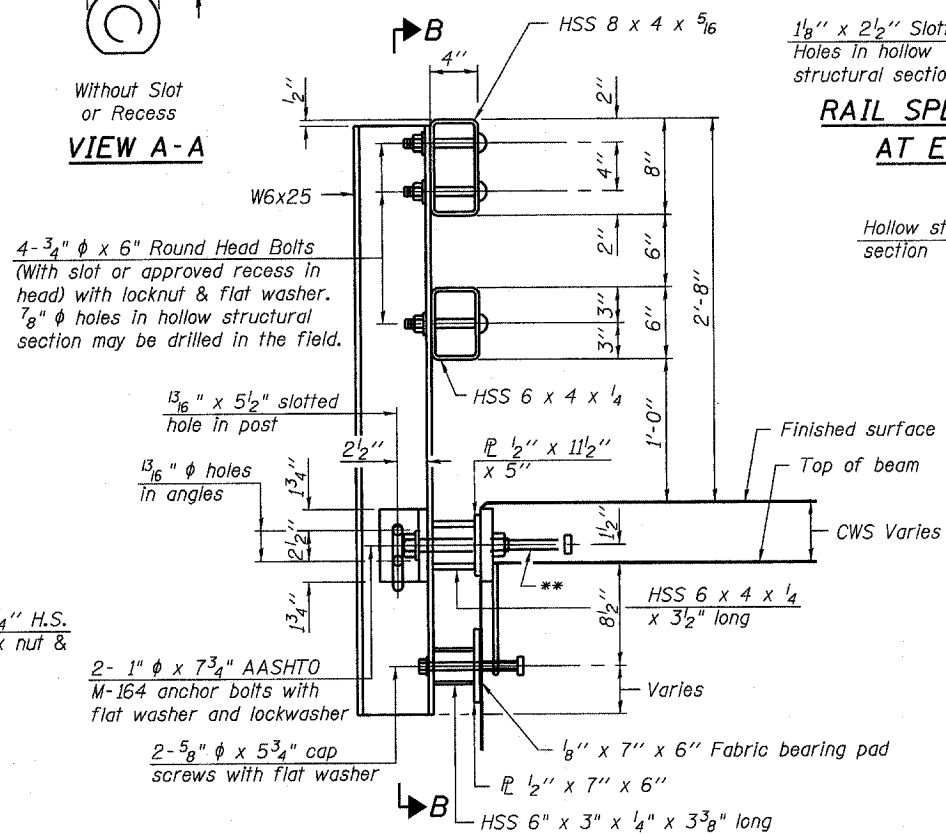
STATE OF ILLINOIS
DEPARTMENT OF TRANSPORTATION

ROUTE NO.	SECTION	COUNTY	TOTAL SHEETS	SHEET NO.
FAP 646		CARROLL	18	8 SHEETS
FED. ROAD DIST. NO. 7	ILLINOIS	FED. AID PROJECT-		

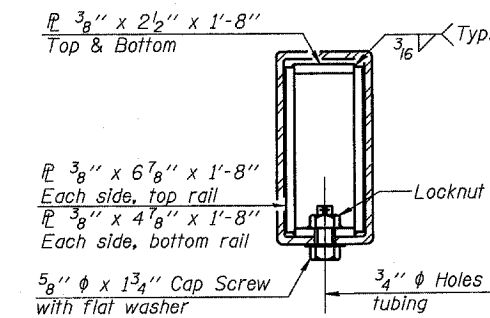


DESIGNED	DFM
CHECKED	CH
DRAWN	MV
CHECKED	DFM

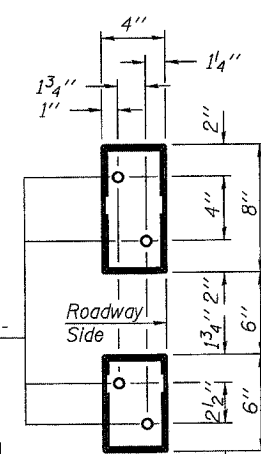
(6'-3" Maximum Post Spacing) (5" minimum to 7 1/8" maximum CWS thickness)



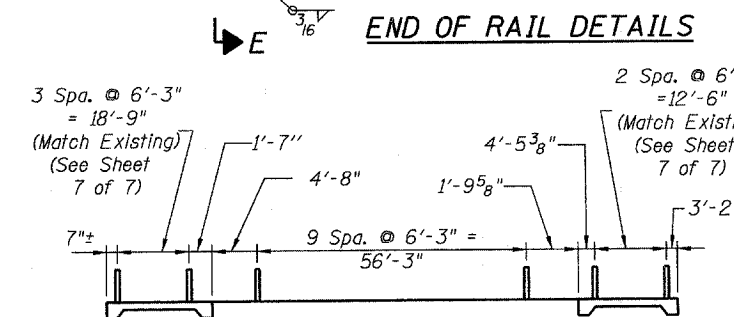
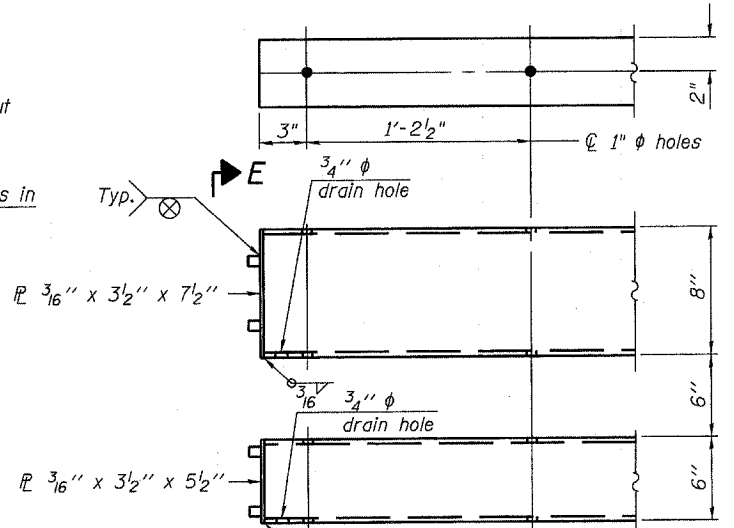
* Threaded areas shall be plugged or blocked off during casting of beam. Galvanized after fabrication.



SECTION AT RAIL SPLICE



VIEW E-E



RAIL SPACING

Notes:
All field drilled holes shall be coated with an approved zinc rich paint before erection.
For multi-span bridges, sufficient 1/4" x 6" x 1'-2" galvanized steel shims shall be provided to align rail between adjacent spans. Cost included with Steel Bridge Rail, Type SM.
Steel rail elements shall be galvanized according to Article 509.05 of the Standard Specifications.
Anchor devices in existing approach slabs should be reused for attachment of Type SM Steel Bridge Railing.
** The studs of the anchor devices shall be placed below the top reinforcement bars and the outermost longitudinal reinforcement bar shall be placed directly above the studs of the rail post anchor device.

BILL OF MATERIAL

Item	Unit	Quantity
Steel Railing, Type SM	Foot	210

**STEEL RAILING, TYPE SM
WITH CONCRETE WEARING SURFACE
F.A.P. 646 (IL RTE 40)
CARROLL COUNTY
STRUCTURE NO. 008-0014
SHEET 18 OF 52**