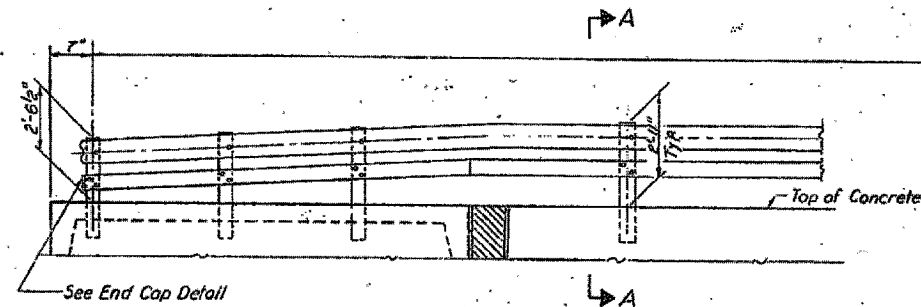


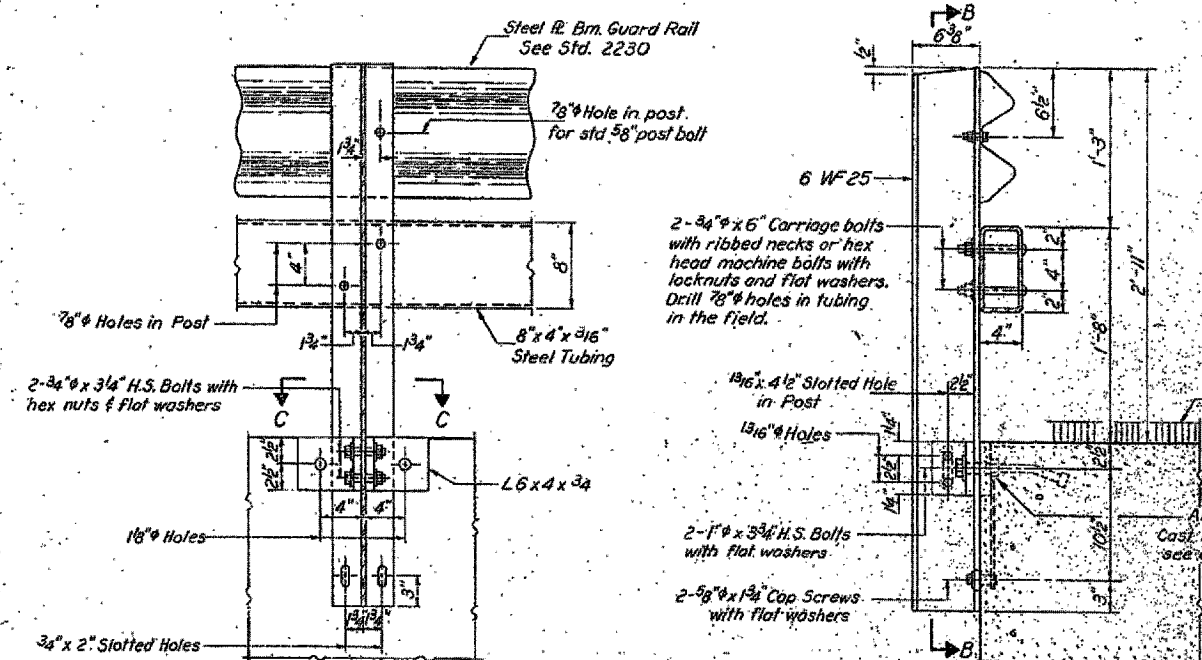
STATE OF ILLINOIS
DEPARTMENT OF PUBLIC WORKS & BUILDINGS
DIVISION OF HIGHWAYS

16'- Post Spaces at 6'-3" = 100'-0"

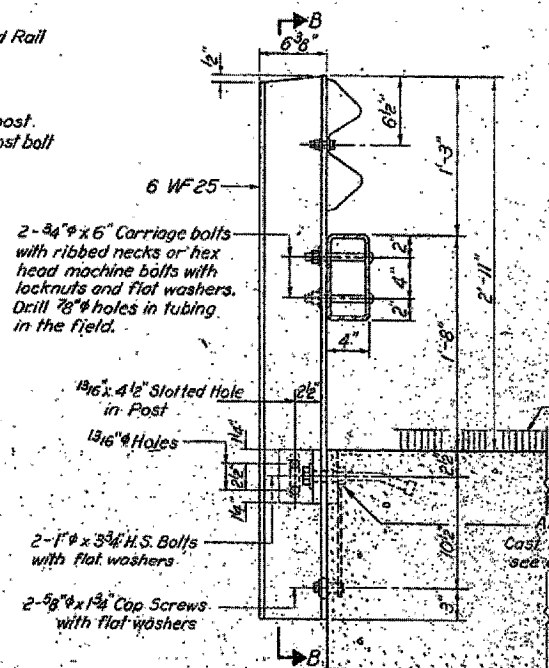
SECTION	DATE	BY	NO.	SHEET NO.
10-20-20	10-20-20	16	15	6 SHEETS



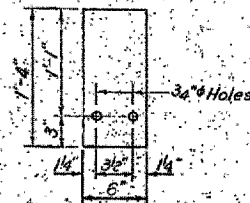
ELEVATION (Looking East)
Showing inside face of railing



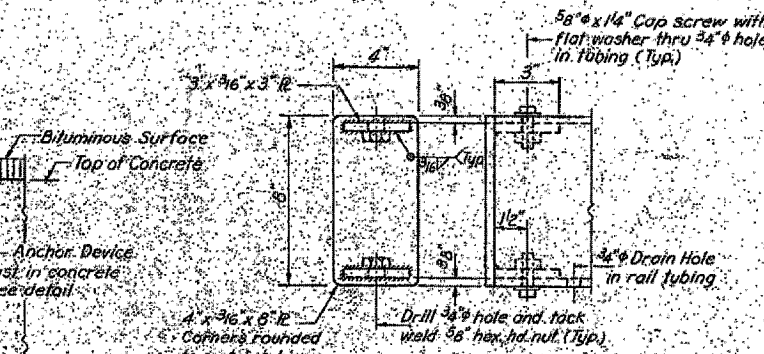
SECTION B-B



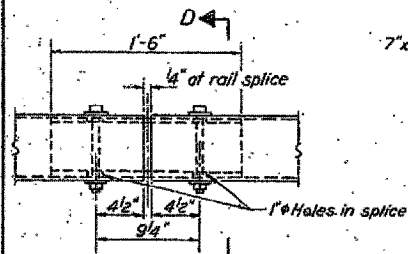
SECTION A-A



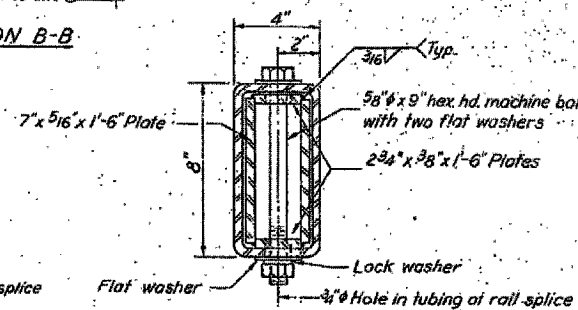
SHIM DETAIL



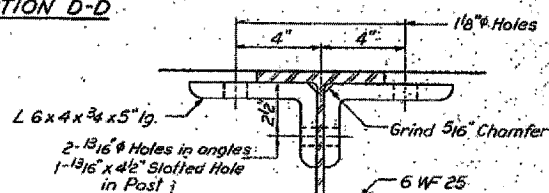
END CAP DETAIL
4 Required



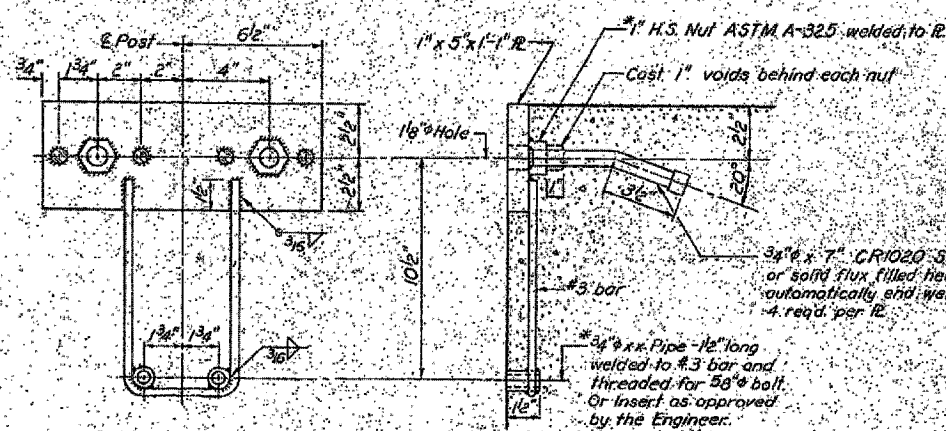
RAIL SPLICE



SECTION D-D



SECTION C-C



ANCHOR DEVICE

* Threaded areas shall be plugged or blocked off during casting of beam.

BILL OF MATERIAL

Item	Unit	Quantity
STEEL RAILING, TYPE W	Lm. FL.	200

TYPE W

INFORMATION ONLY

DESIGNED R.O.G.K.
CHECKED D.A.R.
S.L.
DRAWN J.L. Armstrong
CHECKED D.A.R.
EXAMINED M.G.S. 1971
PASSED H.G. Baumann
APPROVED Richard A. Holtermann
CHIEF ENGINEER