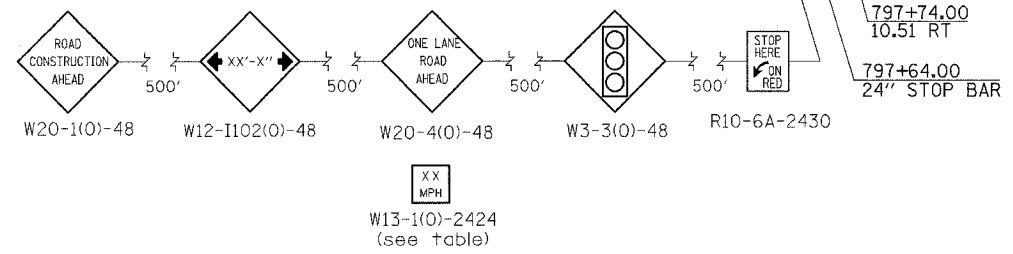
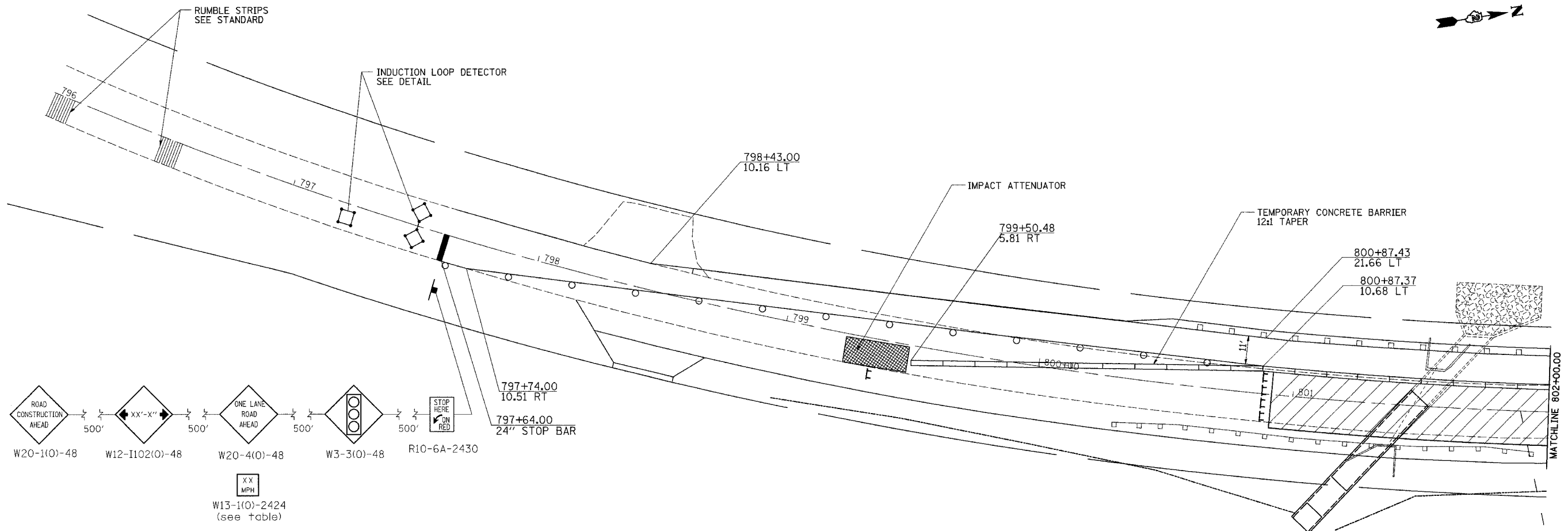


|                     |         |          |                  |           |
|---------------------|---------|----------|------------------|-----------|
| F.A.P. RTE.         | SECTION | COUNTY   | TOTAL SHEETS     | SHEET NO. |
| 642                 | 11T     | CARROLL  | 79               | 31        |
| STA.                |         | TO STA.  |                  |           |
| FED. ROAD DIST. NO. |         | ILLINOIS | FED. AID PROJECT |           |

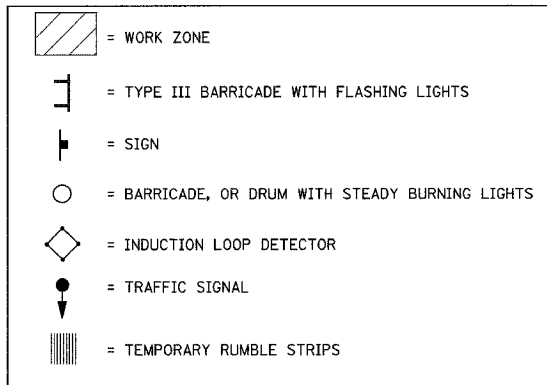
# STAGE 3

## STA 801+47 & 805+74.24



### STAGE 3 NOTES

1. USE STANDARD 701321 FOR CULVERT WORK.
2. CONSTRUCT UPSTREAM SECTIONS OF CULVERTS INCLUDING END SECTIONS, RIP-RAP, AND EARTH WORK.
3. COMPLETE CONSTRUCTION OF FULL WIDTH HMA SHOULDERS IN AREAS OF GUARDRAIL REMOVAL.
4. PLACE PROPOSED GUARD RAIL.



| REVISIONS |      | ILLINOIS DEPARTMENT OF TRANSPORTATION |
|-----------|------|---------------------------------------|
| NAME      | DATE |                                       |
|           |      |                                       |
|           |      |                                       |
|           |      |                                       |
|           |      |                                       |
|           |      |                                       |
|           |      |                                       |
|           |      |                                       |
|           |      |                                       |
|           |      |                                       |
|           |      |                                       |
|           |      |                                       |

SCALE: VERT. \_\_\_\_\_  
 HORIZ. \_\_\_\_\_  
 DATE \_\_\_\_\_ DRAWN BY \_\_\_\_\_  
 CHECKED BY \_\_\_\_\_

### STAGING PLAN SHEETS

PLOT DATE = Wed Oct 10 15:26:07 2007  
 FILE NAME = c:\projects\642\64211T\64211T.dgn  
 USER NAME = c:\users\...