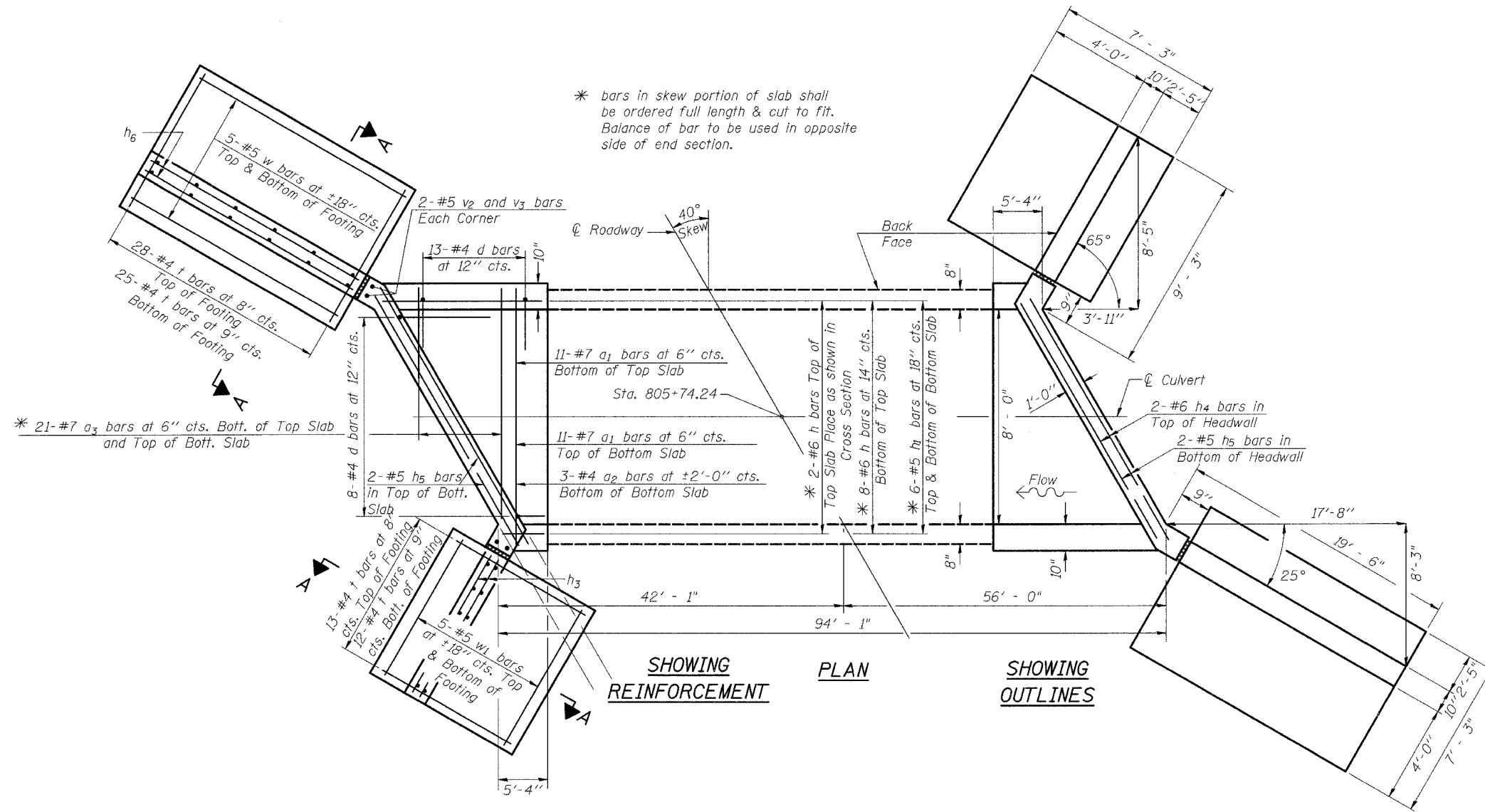


F.A.P. RTE.	SECTION	COUNTY	TOTAL SHEETS	SHEET NO.
642	11T	CARROLL	79	42
STA.	TO STA.			
FED. ROAD DIST. NO.	ILLINOIS	FED. AID PROJECT		

8'x8' Precast Box Culvert Downstream End Section Only LT. STA. 801 + 47

DOWNSTREAM END SECTION ONLY
SEE DROP BOX NO. 1 FOR UPSTREAM END SECTION



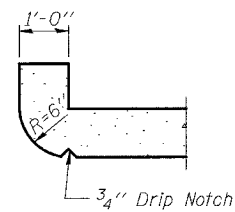
BILL OF MATERIAL

Bar	No.	Size	Length	Shape
a ₁	22	#7	11'-1"	U
a ₂	4	#4	8'-10"	—
a ₃	21	#7	14'-9"	U
d	54	#4	5'-6"	L
h	10	#6	19'-6"	—
h ₁	6	#5	19'-6"	—
h ₂	8	#6	19'-6"	—
h ₃	14	#4	8'-3"	—
h ₄	2	#6	12'-0"	—
h ₅	4	#5	12'-0"	—
h ₆	14	#4	18'-6"	—
n(E)	14	#6	5'-7"	U
n ₁ (E)	16	#5	4'-0"	U
t	78	#4	7'-0"	—
v	31	#4	8'-3"	—
v ₁	31	#5	2'-11"	—
v ₂	4	#5	9'-0"	—
v ₃	4	#5	6'-7"	—
v ₄	8	#5	11'-9"	—
v ₅	16	#5	4'-0"	—
v ₆	16	#5	9'-11"	—
w	10	#5	18'-6"	—
w ₁	10	#5	8'-3"	—
Class "SI" Concrete			Cu Yd	32.17
Reinforcement Bars, Epoxy Coated			Pound	184.16
Reinforcement Bars			Pound	3643.21

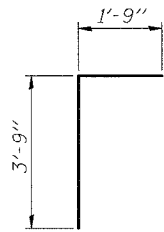
SHOWING REINFORCEMENT

PLAN

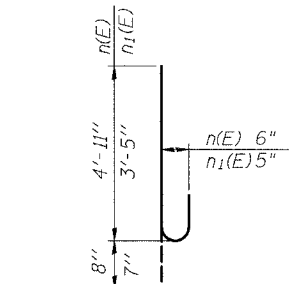
SHOWING OUTLINES



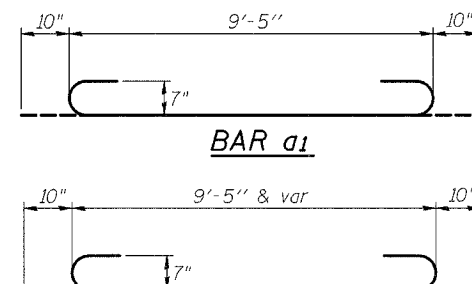
SECTION THRU HEADWALL
(Up Stream End Only)



BAR d



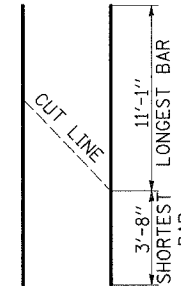
BARS n(E) and n₁(E)



BAR a₁

* BAR a₃

BAR a₃
CUT DIAGRAM



BAR h and h₁ and h₂
CUT DIAGRAM

