

F.A. RTE.	SECTION	COUNTY	TOTAL SHEETS	SHEET NO.
80	(50-5) HBK-2	LASALLE	331	1

P - 93 - 018 - 02  
D - 93 - 061 - 05

348

**INDEX OF SHEETS**

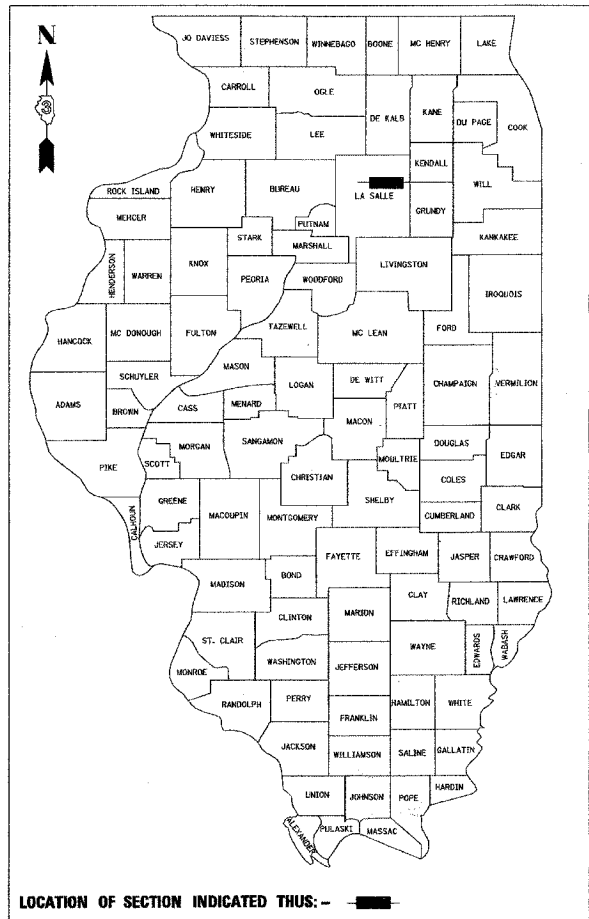
SHEET NO.	DESCRIPTION
1	TITLE SHEET
2	HIGHWAY STANDARDS & GENERAL NOTES
3 - 6	SUMMARY OF QUANTITIES
7 - 11	TYPICAL SECTIONS
12 - 18B	SCHEDULE OF QUANTITIES
19	ALIGNMENT, TIES & BENCHMARKS
20	SUPERELEVATION TRANSITION DETAILS
21 - 38	ROADWAY PLANS & PROFILES
39 - 41	INTERSECTION DETAILS
42 - 82C	MAINTENANCE OF TRAFFIC
83 - 91	STORM WATER POLLUTION PREVENTION PLAN
92 - 102E	DRAINAGE & UTILITY SHEETS
	RIGHT - OF - WAY SHEETS (NOT INCLUDED)
103 - 104	PAVEMENT JOINT & ELEVATION PLANS
105 - 113	PAVEMENT MARKING AND LANDSCAPING PLANS
114	LIGHTING GENERAL NOTES AND SCHEDULE OF QUANTITIES
115 - 122	LIGHTING PLANS
123 - 127	TEMPORARY TRAFFIC SIGNAL PLANS
128	SIGNING PLANS
129 - 147A	STRUCTURE PLANS
148 - 150	BORING LOGS
151 - 154	CULVERT DETAILS
155 - 165D	DETAIL DRAWINGS
166 - 324	CROSS-SECTIONS
325 - 331	EXISTING BRIDGE PLANS

**STATE OF ILLINOIS**  
**DEPARTMENT OF TRANSPORTATION**  
**DIVISION OF HIGHWAYS**  
**PROPOSED**  
**HIGHWAY PLANS**

**F.A.I. 80 (INTERSTATE 80)**  
**SECTION (50-5) HBK-2**  
**PROJECT ACIM-BRI-080-3(127) 095**  
**LASALLE COUNTY**

C - 93 - 106 - 05

**RECONSTRUCTION OF I-80 / MARSEILLES ROAD INTERCHANGE**



LOCATION OF SECTION INDICATED THUS: - [shaded box] -

**HIGHWAY CLASSIFICATIONS**

MARSEILLES ROAD /CH 15 I-80 - F.A.I. 80  
FUNCTIONAL CLASS: MAJOR COLLECTOR FUNCTIONAL CLASS: INTERSTATE  
ADT: 4,600 (2006) ADT: 31,700 (2006)

STATE OF ILLINOIS  
DEPARTMENT OF TRANSPORTATION  
DIVISION OF HIGHWAYS

SUBMITTED October 22, 2007

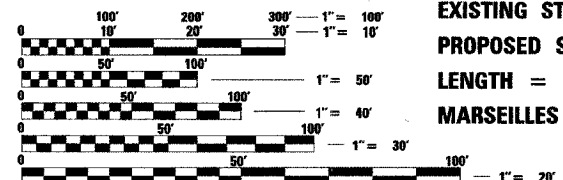
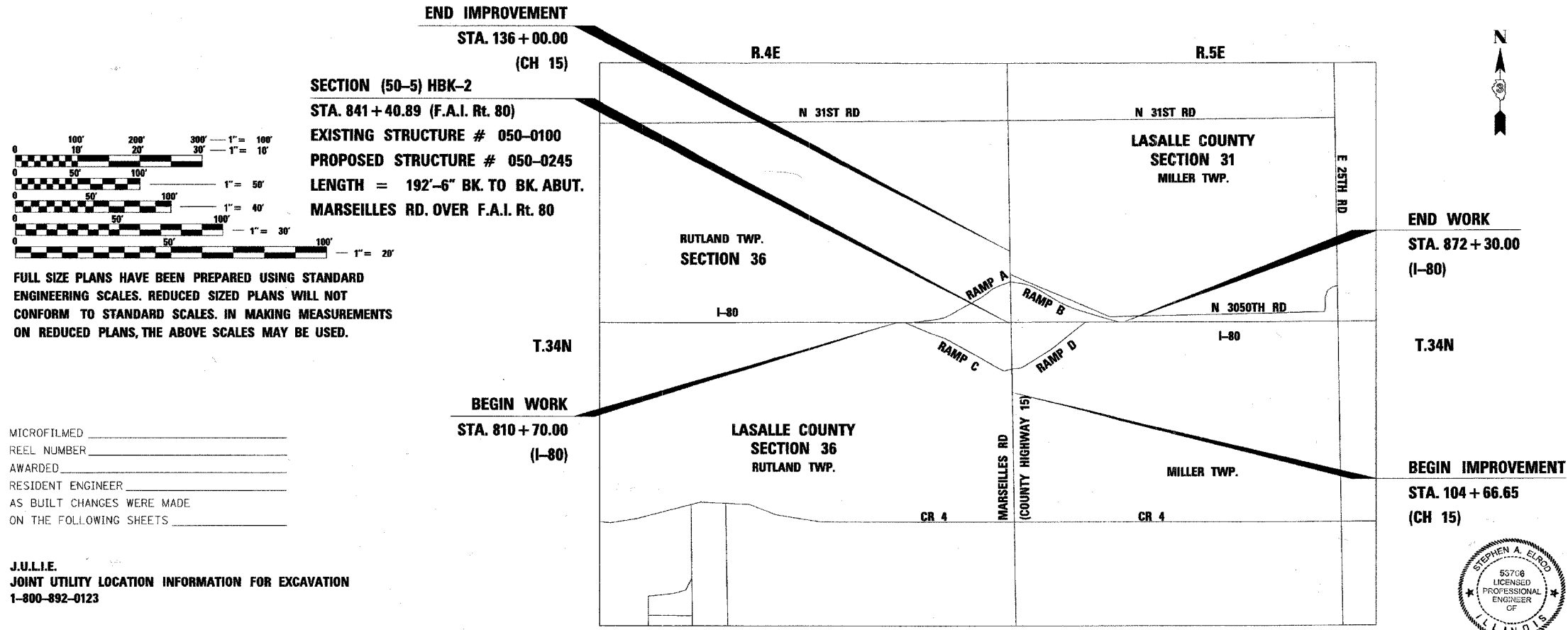
*George A. Ryan*  
DEPUTY DIRECTOR OF HIGHWAYS, REGION ENGINEER

December 7, 2007  
*Eric E. Starnik*  
ENGINEER OF DESIGN AND ENVIRONMENT

December 7, 2007  
*Christine M. Reed*  
DIRECTOR OF HIGHWAYS, CHIEF ENGINEER

**PRINTED BY THE AUTHORITY**  
**OF THE STATE OF ILLINOIS**

**Baker** 801 West Adams Street  
Suite 600  
Chicago, IL 60607  
(312) 707-8770  
Baker Engineering, Inc. IL. REG. NO. 184.000377



FULL SIZE PLANS HAVE BEEN PREPARED USING STANDARD ENGINEERING SCALES. REDUCED SIZED PLANS WILL NOT CONFORM TO STANDARD SCALES. IN MAKING MEASUREMENTS ON REDUCED PLANS, THE ABOVE SCALES MAY BE USED.

MICROFILMED \_\_\_\_\_  
REEL NUMBER \_\_\_\_\_  
AWARDED \_\_\_\_\_  
RESIDENT ENGINEER \_\_\_\_\_  
AS BUILT CHANGES WERE MADE ON THE FOLLOWING SHEETS \_\_\_\_\_

J.U.L.I.E.  
JOINT UTILITY LOCATION INFORMATION FOR EXCAVATION  
1-800-892-0123

DISTRICT 3 NO. (815) 434-6131

PROJECT ENGINEER: David Broviak  
UNIT CHIEF: Mark Jones  
CONTRACT NO. 66600



**LOCATION MAP**

GROSS LENGTH & NET LENGTH FOR MARSEILLES ROAD = 3133 FT. = 0.593 MI.  
GROSS LENGTH & NET LENGTH FOR I-80 RAMPS = 9489 FT. = 1.79 MI.



P.E.  
IL. REG. NO. 59708  
EXP. 11/30/09  
DATE 10/14/07