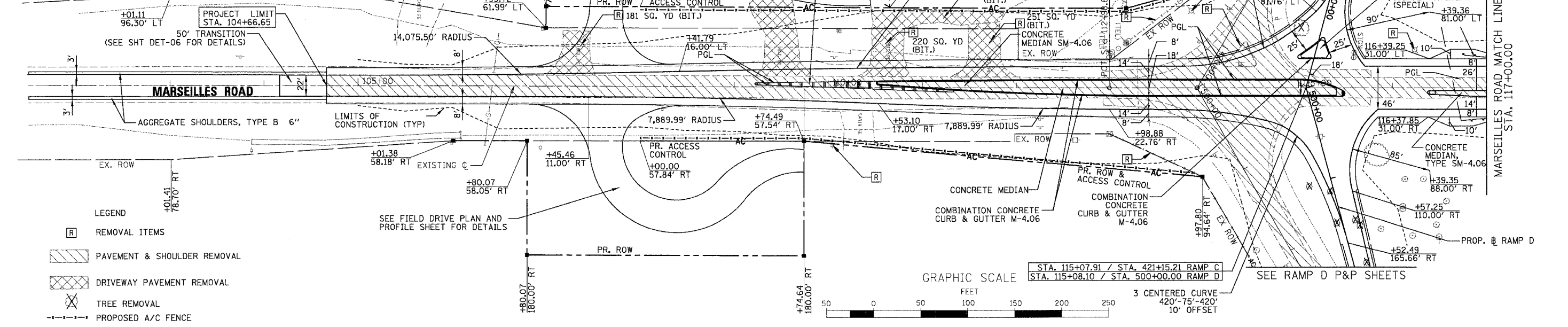
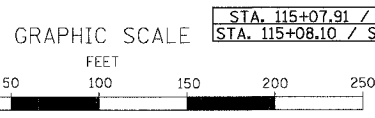


F.A.I. RTE.	SECTION	COUNTY	TOTAL SHEETS	SHEET NO.
80	(50-5) HBK-2	LASALLE	331	21
STA. 105+00.00 TO STA. 117+00.00				
FED. ROAD DIST. NO.			ILLINOIS FED. AID PROJECT	

- NOTES:
- SEE LIGHTING PLANS FOR THE LOCATIONS OF TEMPORARY AND PROPOSED LIGHTING
  - SEE TYPICAL SECTIONS FOR PAVEMENT STRUCTURE.
  - SEE ROADWAY AND INTERSECTION DETAILS FOR MORE GEOMETRIC DETAIL.
  - SEE PAVEMENT JOINT AND ELEVATION PLAN FOR JOINTING AND ELEVATION DETAILS.
  - PROPOSED DRIVEWAY CENTERLINES ARE PERPENDICULAR TO MARSEILLES ROAD CENTERLINE UNLESS OTHERWISE NOTED.
  - SEE DRAINAGE & UTILITY PLANS FOR REMOVAL OF STORM SEWER PIPE, STRUCTURES AND RELATED WORK. EX. ROW



- LEGEND
- [R] REMOVAL ITEMS
  - [Hatched] PAVEMENT & SHOULDER REMOVAL
  - [Cross-hatched] DRIVEWAY PAVEMENT REMOVAL
  - [X] TREE REMOVAL
  - [Dashed line] PROPOSED A/C FENCE

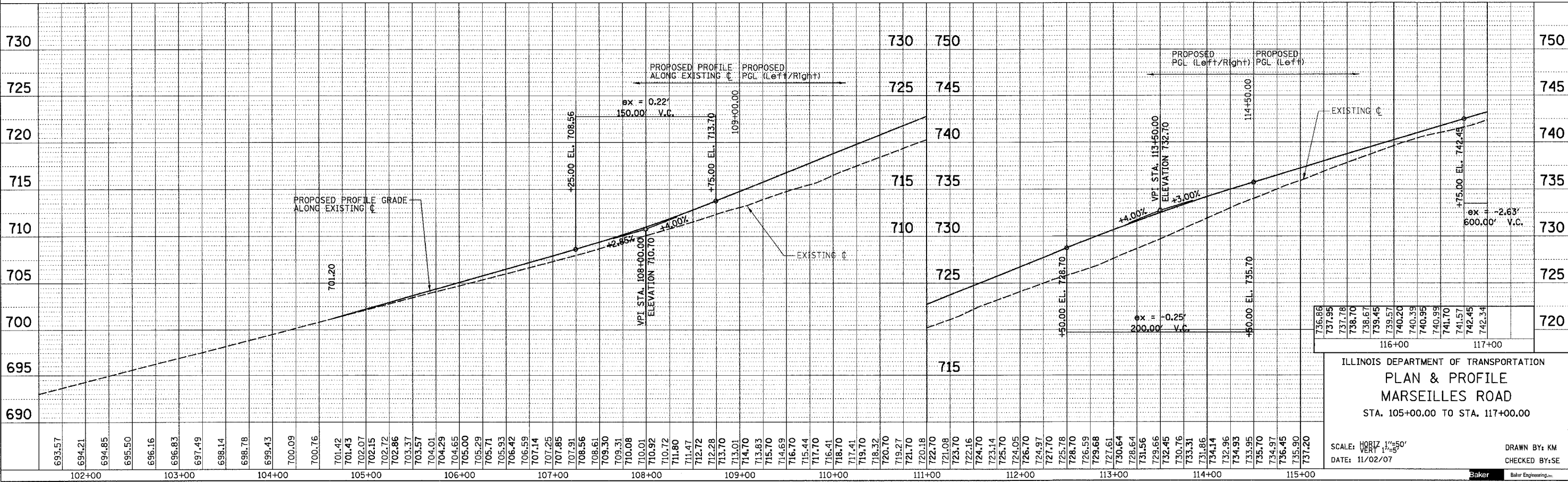


STA. 115+07.91 / STA. 421+15.21 RAMP C  
 STA. 115+08.10 / STA. 500+00.00 RAMP D

3 CENTERED CURVE  
 420'-75'-420'  
 10' OFFSET

DATE	
BY	
PLAN	
NO.	
NO.	
NO.	

DATE	
BY	
PROFILE	
NO.	
NO.	
NO.	



736.86	737.95	737.78	738.70	738.67	739.45	739.57	740.39	740.95	740.99	741.70	741.57	742.45	742.34
116+00						117+00							

ILLINOIS DEPARTMENT OF TRANSPORTATION  
 PLAN & PROFILE  
 MARSEILLES ROAD  
 STA. 105+00.00 TO STA. 117+00.00

SCALE: HORIZ. 1"=50'  
 VERT. 1"=5'

DATE: 11/02/07

DRAWN BY: KM  
 CHECKED BY: SE



h:\07496\3.0 deliverables\3.2 roadway\design\sheet\180\_RPP01.rpt  
 11/5/2007