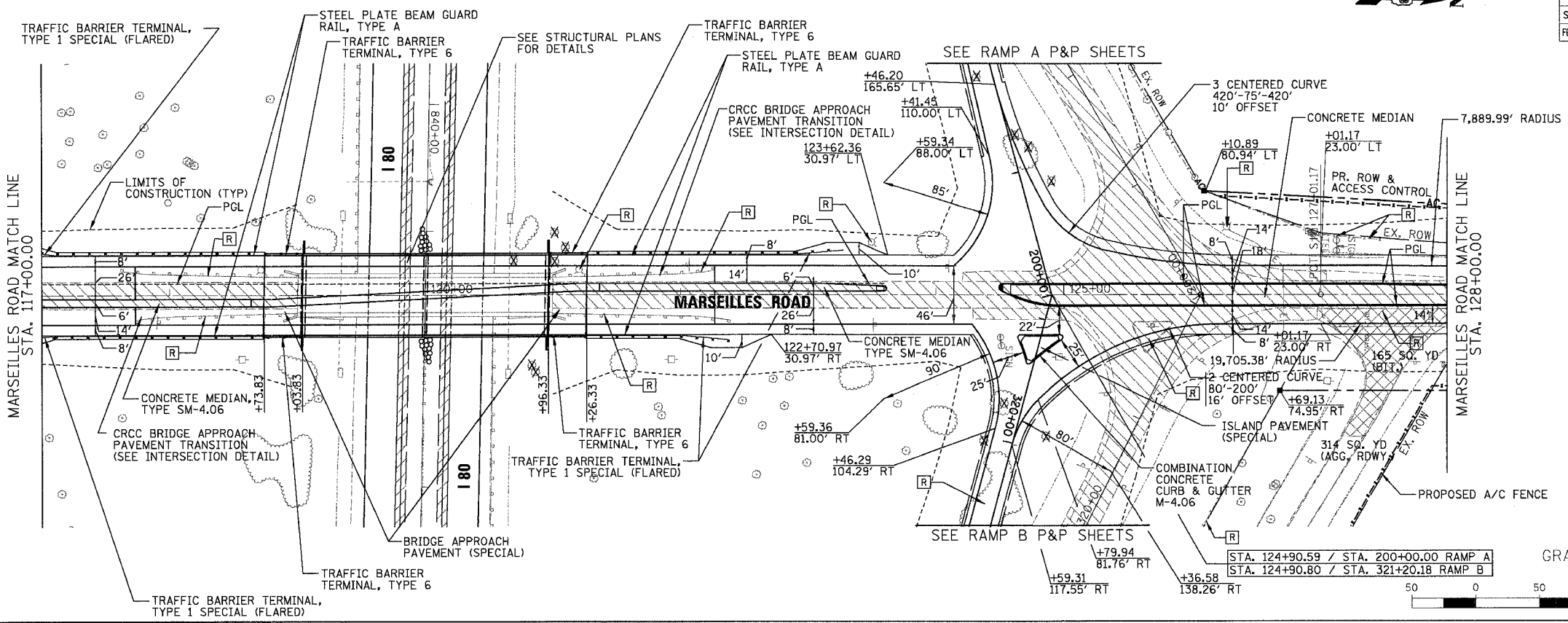


F.A.I. RTE.	SECTION	COUNTY	TOTAL SHEET SHEETS	SHEET NO.
80	(50-5) HBK-2	LASALLE	331	22
STA. 117+00.00		TO STA. 128+00.00		
FED. ROAD DIST. NO.		ILLINOIS	FED. AID PROJECT	

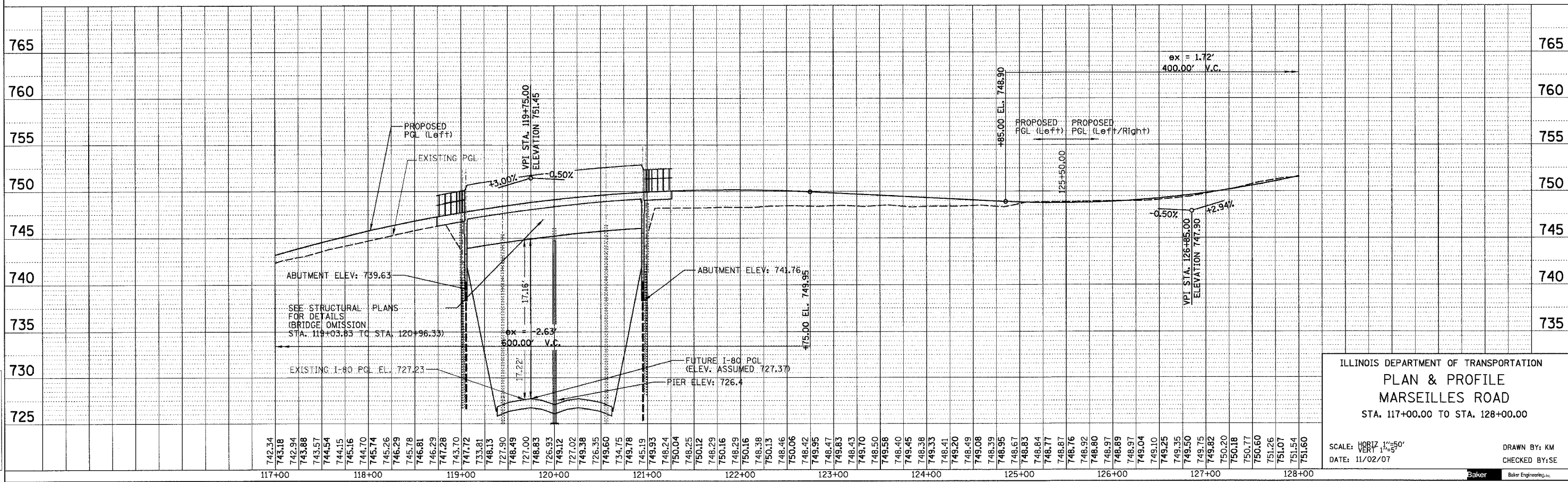
- NOTES:
- SEE LIGHTING PLANS FOR THE LOCATIONS OF TEMPORARY AND PROPOSED LIGHTING STRUCTURE.
 - SEE TYPICAL SECTIONS FOR PAVEMENT STRUCTURE.
 - SEE ROADWAY AND INTERSECTION DETAILS FOR MORE GEOMETRIC DETAIL.
 - SEE PAVEMENT JOINT AND ELEVATION PLAN FOR JOINTING AND ELEVATIONS DETAILS.
 - PROPOSED DRIVEWAY CENTERLINES ARE PERPENDICULAR TO MARSEILLES ROAD UNLESS OTHERWISE NOTED.
 - SEE DRAINAGE & UTILITY PLANS FOR REMOVAL OF STORM SEWER PIPE, STRUCTURES AND RELATED WORK.

PLAN	SURVEYED	DATE
	PLOTTED	
	CHECKED	
	BY	
	DATE	

- LEGEND
- [R] REMOVAL ITEMS
 - [Hatched Box] PAVEMENT & SHOULDER REMOVAL
 - [Cross-hatched Box] DRIVEWAY PAVEMENT REMOVAL
 - [Tree Symbol] TREE REMOVAL
 - [Dashed Line] PROPOSED A/C FENCE



PROFILE	SURVEYED	DATE
	PLOTTED	
	CHECKED	
	BY	
	DATE	



ILLINOIS DEPARTMENT OF TRANSPORTATION
PLAN & PROFILE
MARSEILLES ROAD
 STA. 117+00.00 TO STA. 128+00.00

SCALE: HORIZ. 1"=50'
 VERT. 1"=5'
 DATE: 11/02/07

DRAWN BY: KM
 CHECKED BY: SE

