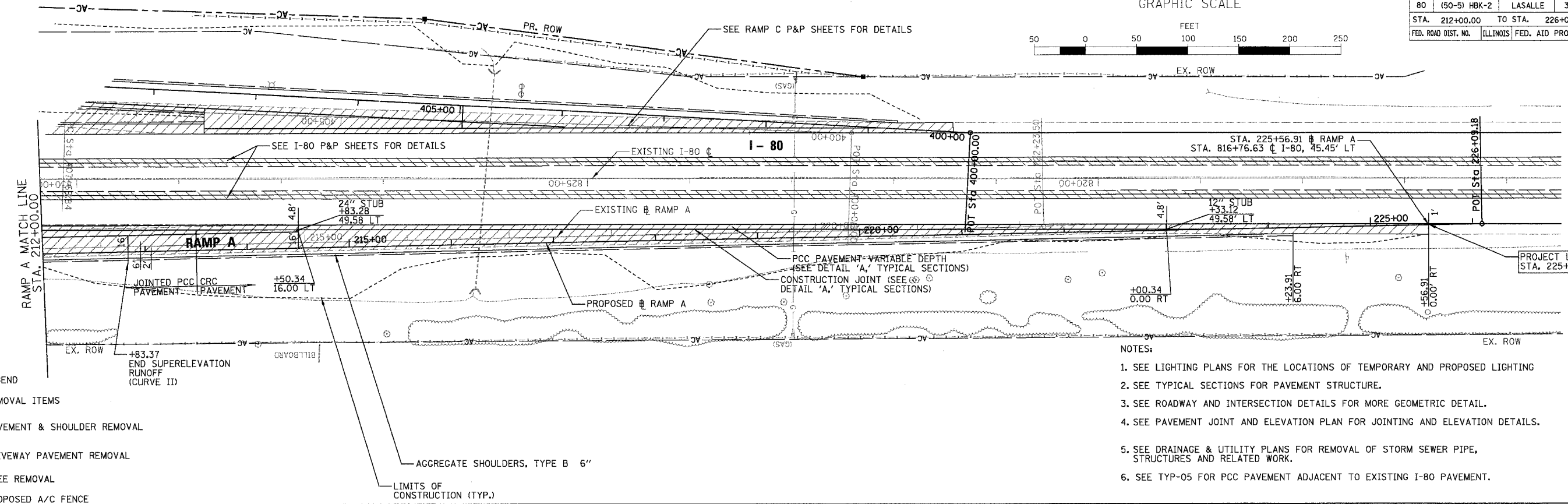
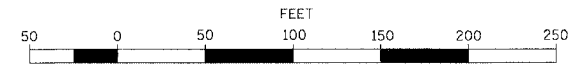


F.A.I. RTE.	SECTION	COUNTY	TOTAL SHEETS	SHEET NO.
80	(50-5) HBK-2	LASALLE	331	25
STA. 212+00.00 TO STA. 226+09.18		ILLINOIS FED. AID PROJECT		

GRAPHIC SCALE

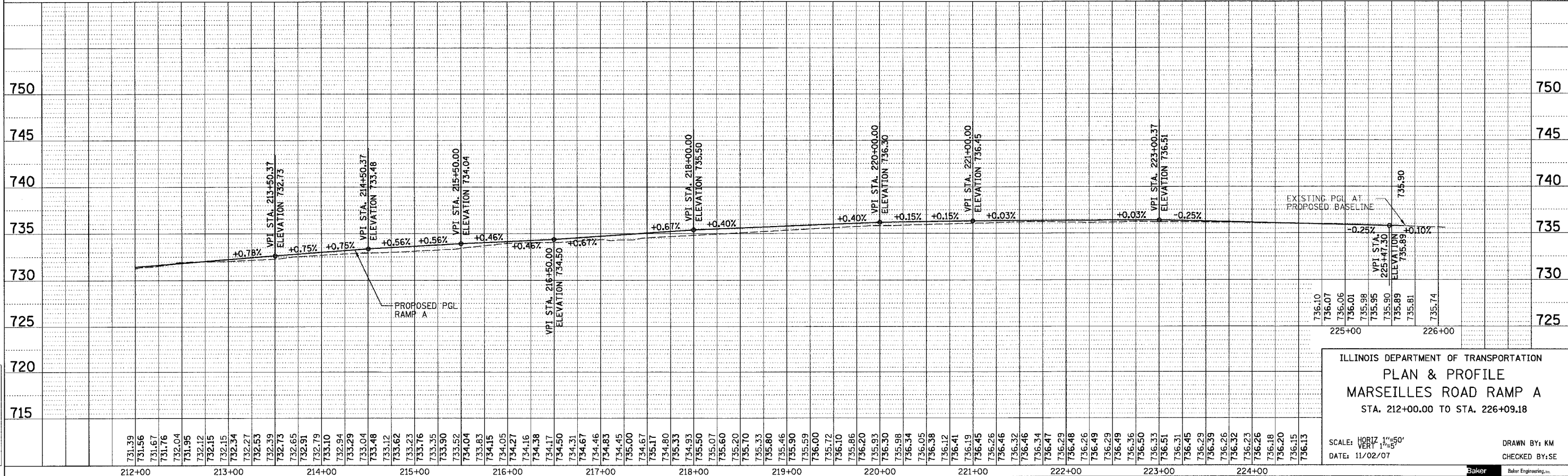


- NOTES:
1. SEE LIGHTING PLANS FOR THE LOCATIONS OF TEMPORARY AND PROPOSED LIGHTING
 2. SEE TYPICAL SECTIONS FOR PAVEMENT STRUCTURE.
 3. SEE ROADWAY AND INTERSECTION DETAILS FOR MORE GEOMETRIC DETAIL.
 4. SEE PAVEMENT JOINT AND ELEVATION PLAN FOR JOINTING AND ELEVATION DETAILS.
 5. SEE DRAINAGE & UTILITY PLANS FOR REMOVAL OF STORM SEWER PIPE, STRUCTURES AND RELATED WORK.
 6. SEE TYP-05 FOR PCC PAVEMENT ADJACENT TO EXISTING I-80 PAVEMENT.

PLAN	DATE
BY	
CHECKED	
NO.	

- LEGEND
- [R] REMOVAL ITEMS
 - [Hatched] PAVEMENT & SHOULDER REMOVAL
 - [Cross-hatched] DRIVEWAY PAVEMENT REMOVAL
 - [X] TREE REMOVAL
 - [Dashed line] PROPOSED A/C FENCE

PROFILE	DATE
BY	
CHECKED	
NO.	



ILLINOIS DEPARTMENT OF TRANSPORTATION
 PLAN & PROFILE
 MARSEILLES ROAD RAMP A
 STA. 212+00.00 TO STA. 226+09.18

SCALE: HORIZ 1"=50'
 DATE: 11/02/07
 DRAWN BY: KM
 CHECKED BY: SE



h:\107496\3.0 dellverable\3.2 roadway\design\sheets\180_RPP05.rpp
 11/5/2007