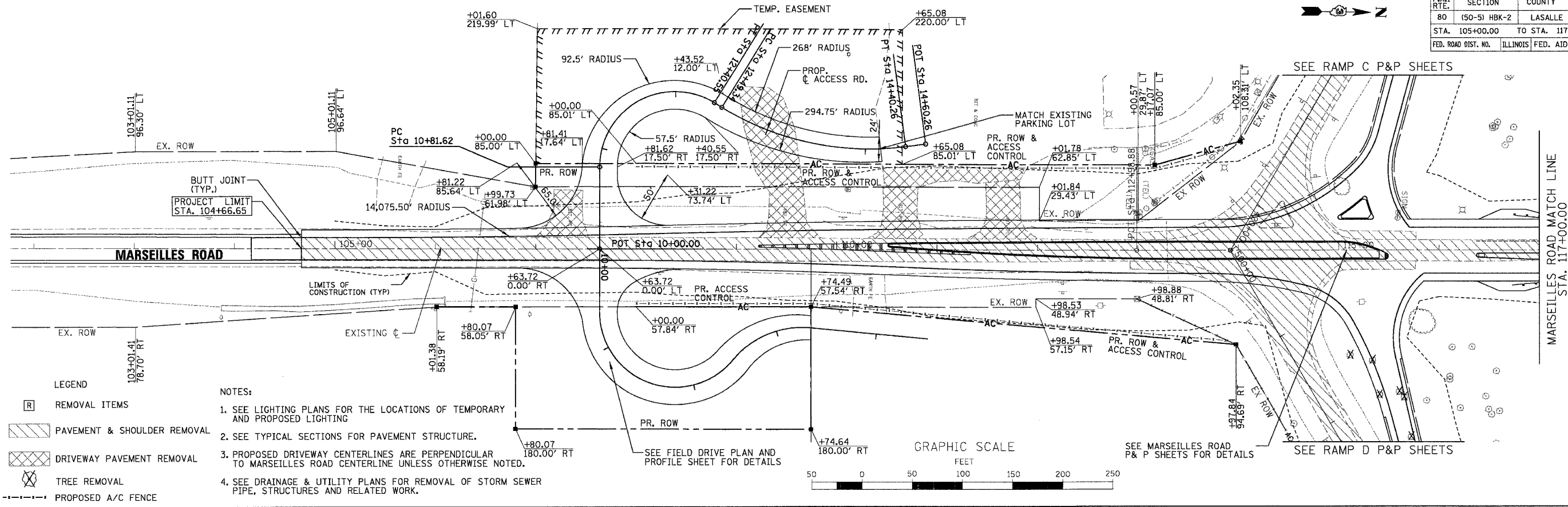
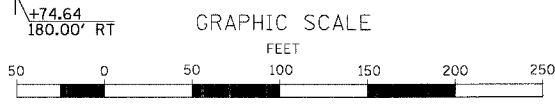


F.A.I. RTE.	SECTION	COUNTY	TOTAL SHEETS	SHEET NO.
80	(50-5) HBK-2	LASALLE	331	32
STA. 105+00.00		TO STA. 117+00.00		
FED. ROAD DIST. NO.		ILLINOIS	FED. AID PROJECT	

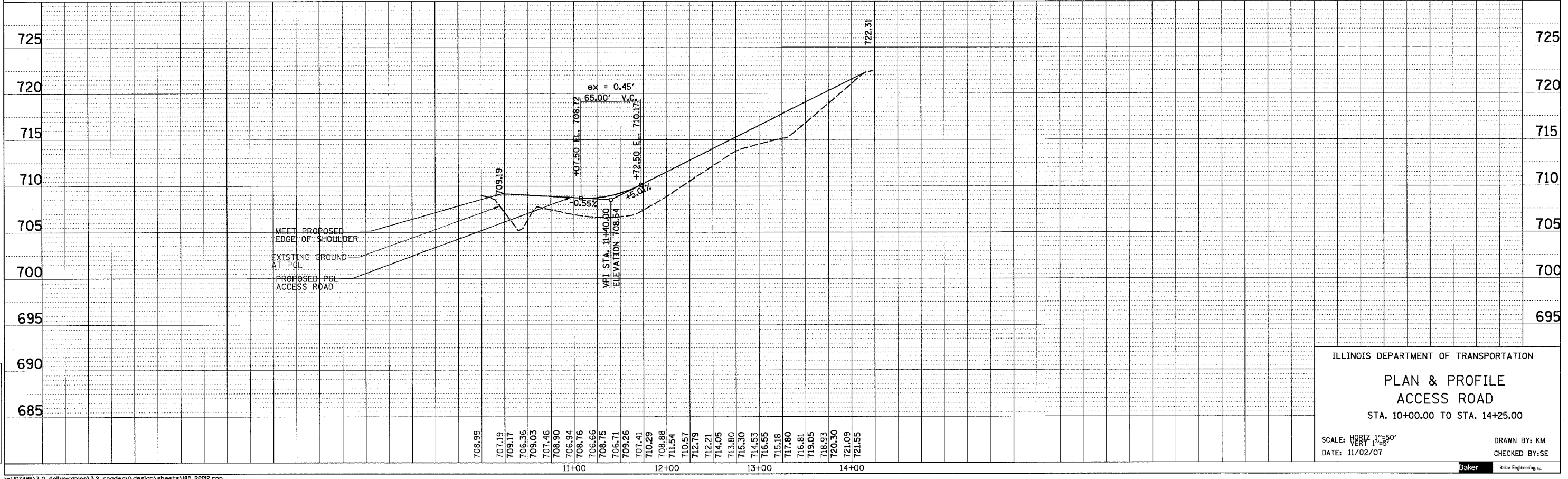


- LEGEND**
- [R] REMOVAL ITEMS
  - [Hatched Box] PAVEMENT & SHOULDER REMOVAL
  - [Cross-hatched Box] DRIVEWAY PAVEMENT REMOVAL
  - [Tree Symbol] TREE REMOVAL
  - [Dashed Line] PROPOSED A/C FENCE
- NOTES:**
- SEE LIGHTING PLANS FOR THE LOCATIONS OF TEMPORARY AND PROPOSED LIGHTING
  - SEE TYPICAL SECTIONS FOR PAVEMENT STRUCTURE.
  - PROPOSED DRIVEWAY CENTERLINES ARE PERPENDICULAR TO MARSEILLES ROAD CENTERLINE UNLESS OTHERWISE NOTED.
  - SEE DRAINAGE & UTILITY PLANS FOR REMOVAL OF STORM SEWER PIPE, STRUCTURES AND RELATED WORK.



PLAN	SURVEYED	DATE
	BY	
	NOTED	
	NOTED	
	NOTED	
	NOTED	

PROFILE	SURVEYED	DATE
	BY	
	NOTED	
	NOTED	
	NOTED	
	NOTED	



ILLINOIS DEPARTMENT OF TRANSPORTATION

**PLAN & PROFILE**

**ACCESS ROAD**

STA. 10+00.00 TO STA. 14+25.00

SCALE: HORIZ 1"=50'  
VERT 1"=5'

DATE: 11/02/07

DRAWN BY: KM  
CHECKED BY: SE



\\107496\3.0 dellverable\3.2 roadway\design\sheet\180\_RPP12.rpp 11/5/2007