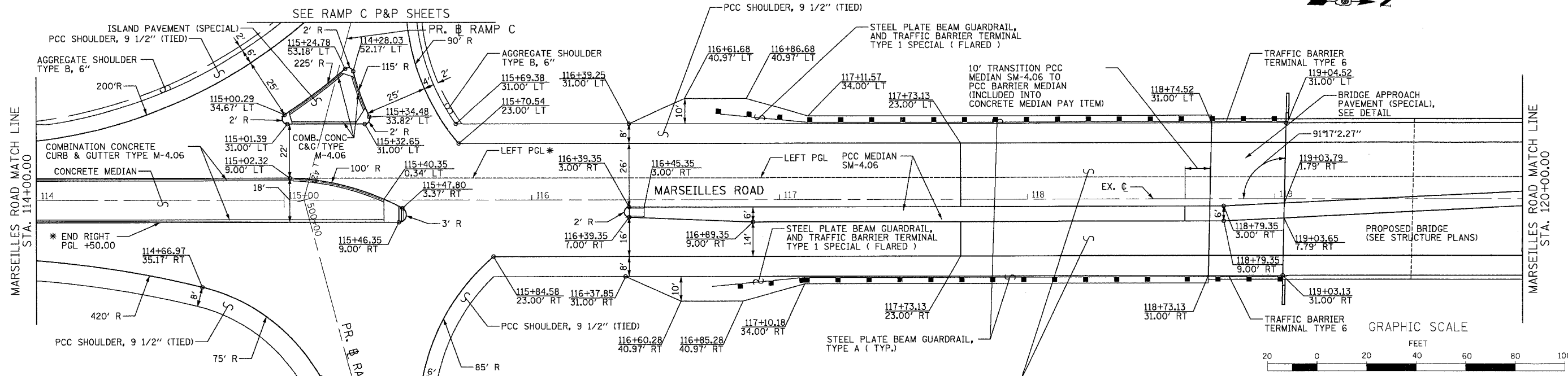
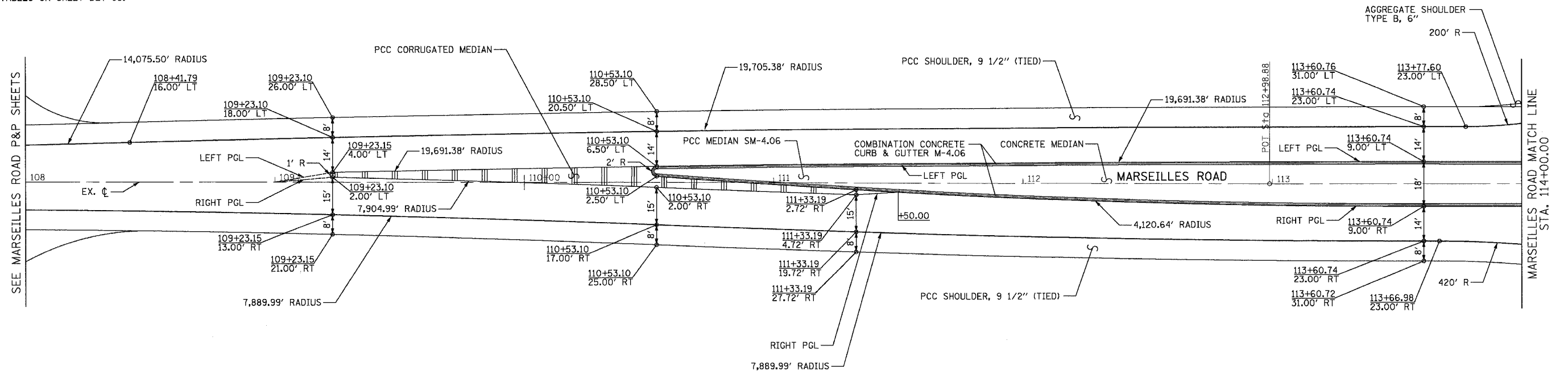


F.A.I. SECTION COUNTY TOTAL SHEET SHEET
RD (50-5) HBK-2 LASALLE 331 39
STA. TO STA.
FED. ROAD DIST. NO. ILLINOIS FED. AID PROJECT

NOTE:
FOR TRANSITIONAL APPROACH STATIONS AND OFFSETS
SEE TABLES ON SHEET DET-03.



REVISIONS	
NAME	DATE

ILLINOIS DEPARTMENT OF TRANSPORTATION
**ROADWAY AND INTERSECTION
DETAILS**
MARSEILLES ROAD STA. 108+00 TO STA. 120+00
SCALE: 1"=20'
DATE: 11/02/07
DRAWN BY: KM
CHECKED BY: SE



NOTE:
* SEE MARSEILLES ROAD PAVEMENT JOINT AND ELEVATION PLAN
RAMPS C & D FOR DETAILS