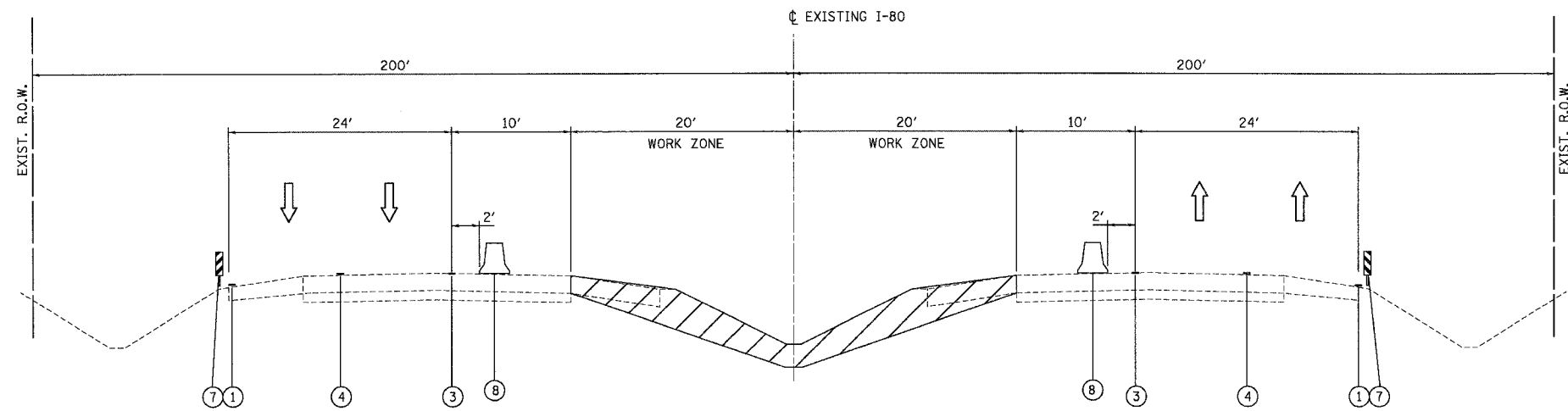


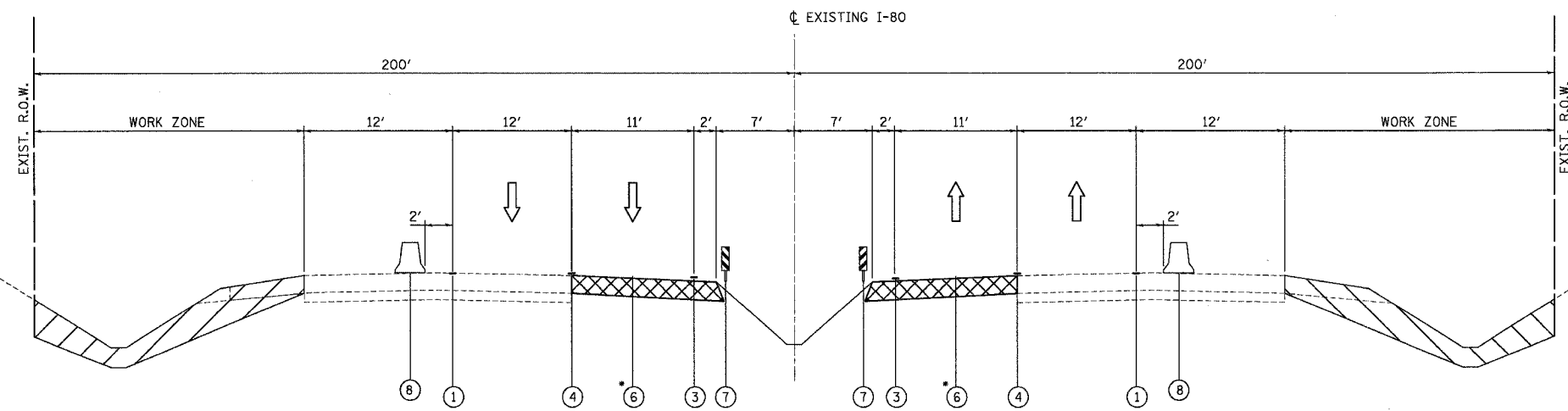
|                     |              |          |                  |           |
|---------------------|--------------|----------|------------------|-----------|
| F.A.I. RTE.         | SECTION      | COUNTY   | TOTAL SHEETS     | SHEET NO. |
| 80                  | (50-5) HBK-2 | LASALLE  | 331              | 48        |
| STA.                |              | TO STA.  |                  |           |
| FED. ROAD DIST. NO. |              | ILLINOIS | FED. AID PROJECT |           |

LEGEND:

- ① TEMPORARY PAVEMENT MARKING LINE, 4 INCHES (WHITE)
- ② TEMPORARY PAVEMENT MARKING LINE, 4 INCHES (DOUBLE YELLOW)
- ③ TEMPORARY PAVEMENT MARKING LINE, 4 INCHES (YELLOW)
- ④ TEMPORARY PAVEMENT MARKING LINE, SKIP-DASH, 4 INCHES (WHITE)
- ⑤ DRUM WITH STEADY BURNING LIGHT
- ⑥ TEMPORARY PAVEMENT
- ⑦ DOUBLE VERTICAL PANEL (BACK TO BACK) WITH BI-DIRECTIONAL STEADY BURNING LIGHTS
- ⑧ TEMPORARY CONCRETE BARRIER



I-80 STAGE 1A  
 STA. 810+70.00 TO STA. 872+30.00  
 I-80 STAGE 1B, 2A & 2B  
 STA. 838+85.00 TO STA. 843+00.00



I-80 STAGE 1B  
 STA. 848+23.00 TO STA. 869+00.00  
 I-80 STAGE 2A & 2B  
 STA. 814+00.00 TO STA. 833+62.00

\* SEE SHEET TYP-04 FOR TEMPORARY PAVEMENT DESIGN

- WORK ZONE
- TEMPORARY PAVEMENT

**Baker**

Baker Engineering, Inc.

| REVISIONS |      |
|-----------|------|
| NAME      | DATE |
|           |      |
|           |      |
|           |      |
|           |      |
|           |      |
|           |      |
|           |      |
|           |      |
|           |      |
|           |      |

ILLINOIS DEPARTMENT OF TRANSPORTATION  
 MAINTENANCE OF TRAFFIC  
 TYPICAL CROSS-SECTIONS  
 I-80

SCALE: 1"=50'  
 DATE: 11/02/07

DRAWN BY: KM  
 CHECKED BY: SE