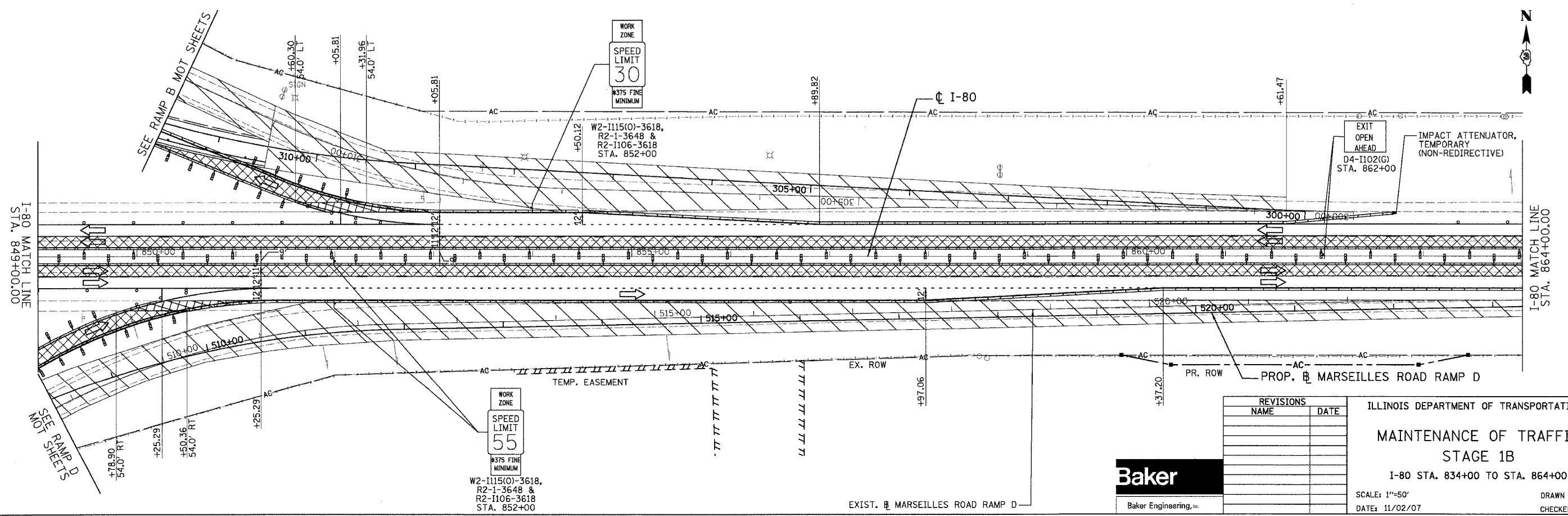
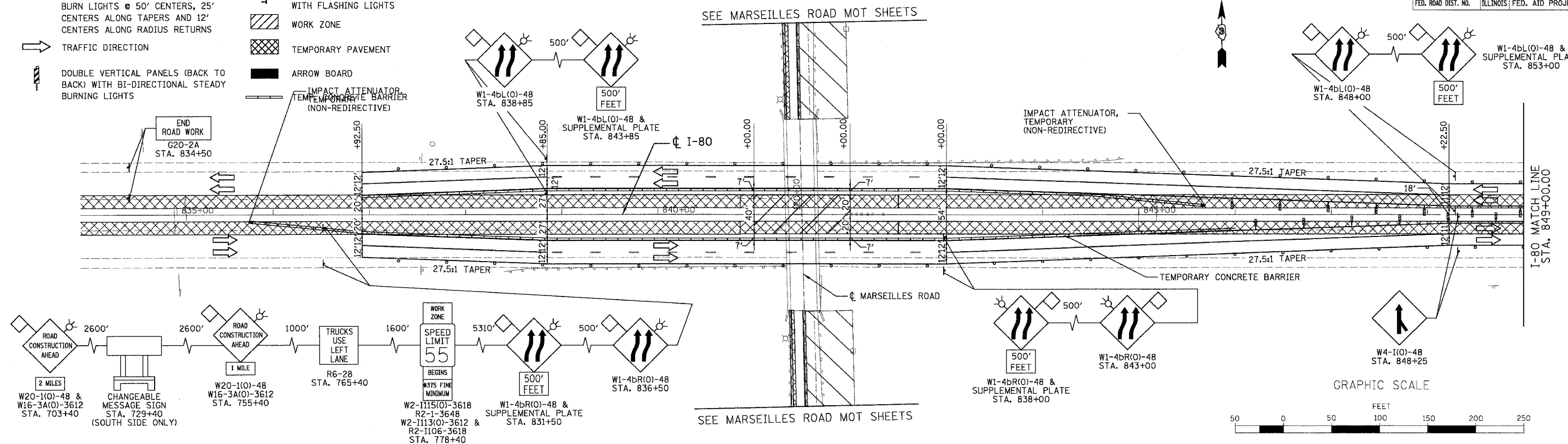


F.A.I. RTE.	SECTION	COUNTY	TOTAL SHEETS	SHEET NO.
80	(50-5) HBK-2	LASALLE	331	60
STA. 834+00.00 TO STA. 864+00.00				
FED. ROAD DIST. NO. ILLINOIS FED. AID PROJECT				

LEGEND

- DRUMS WITH BI-DIRECTIONAL STEADY BURN LIGHTS @ 50' CENTERS, 25' CENTERS ALONG TAPERS AND 12' CENTERS ALONG RADIUS RETURNS
- TRAFFIC DIRECTION
- ▬ DOUBLE VERTICAL PANELS (BACK TO BACK) WITH BI-DIRECTIONAL STEADY BURNING LIGHTS
- ▬ TYPE III BARRICADES WITH FLASHING LIGHTS
- ▨ WORK ZONE
- ▩ TEMPORARY PAVEMENT
- ▬ ARROW BOARD
- ▬ IMPACT ATTENUATOR, TEMPORARY BARRIER (NON-REDIRECTIVE)



REVISIONS	
NAME	DATE

ILLINOIS DEPARTMENT OF TRANSPORTATION

MAINTENANCE OF TRAFFIC

STAGE 1B

I-80 STA. 834+00 TO STA. 864+00

SCALE: 1"=50'

DATE: 11/02/07

DRAWN BY: KM

CHECKED BY: SE

