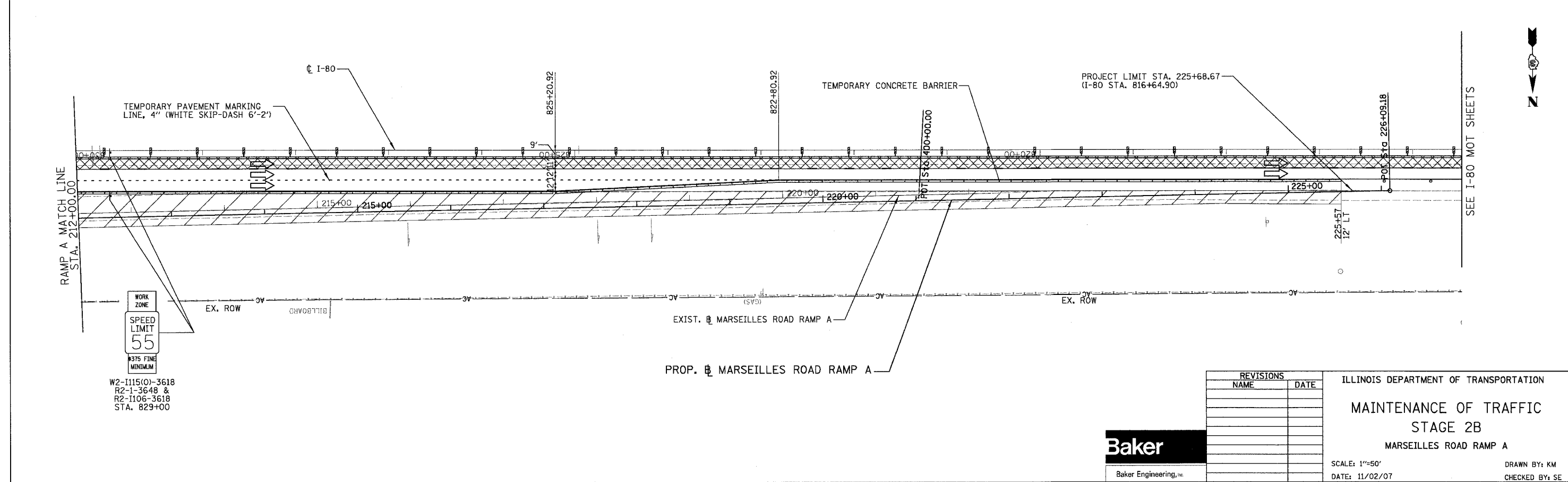
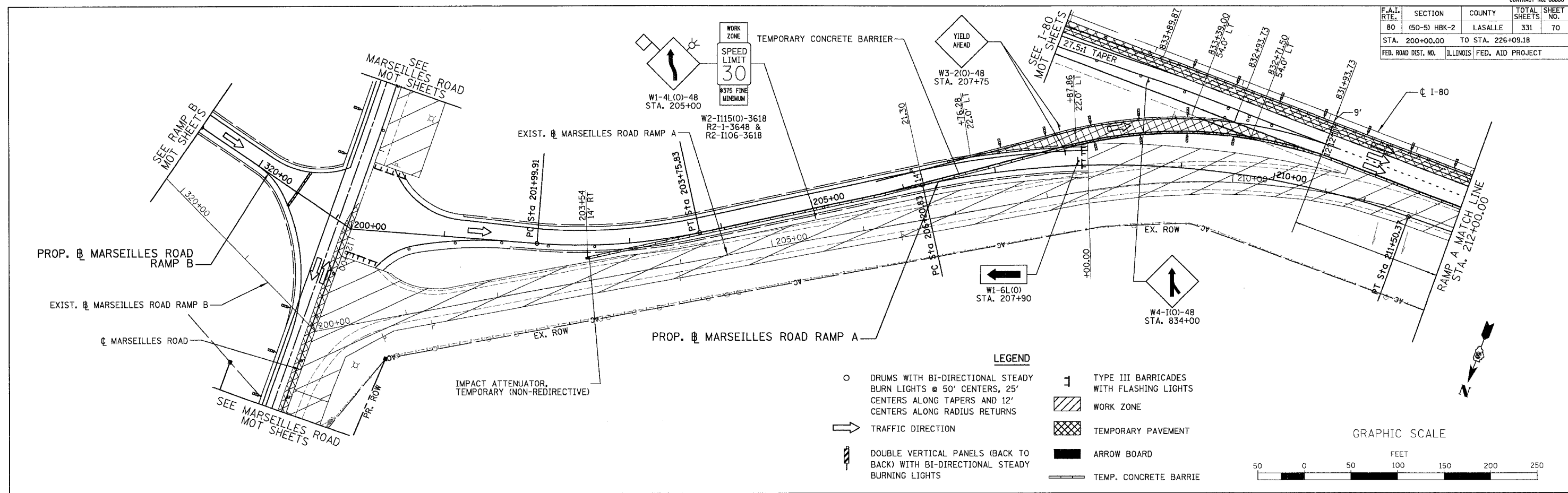


F.A.I. RTE.	SECTION	COUNTY	TOTAL SHEETS	SHEET NO.
80	(50-5) HBK-2	LASALLE	331	70
STA. 200+00.00		TO STA. 226+09.18		
FED. ROAD DIST. NO.		ILLINOIS FED. AID PROJECT		



REVISIONS	
NAME	DATE

ILLINOIS DEPARTMENT OF TRANSPORTATION
MAINTENANCE OF TRAFFIC
STAGE 2B
 MARSEILLES ROAD RAMP A
 SCALE: 1"=50'
 DATE: 11/02/07
 DRAWN BY: KM
 CHECKED BY: SE

