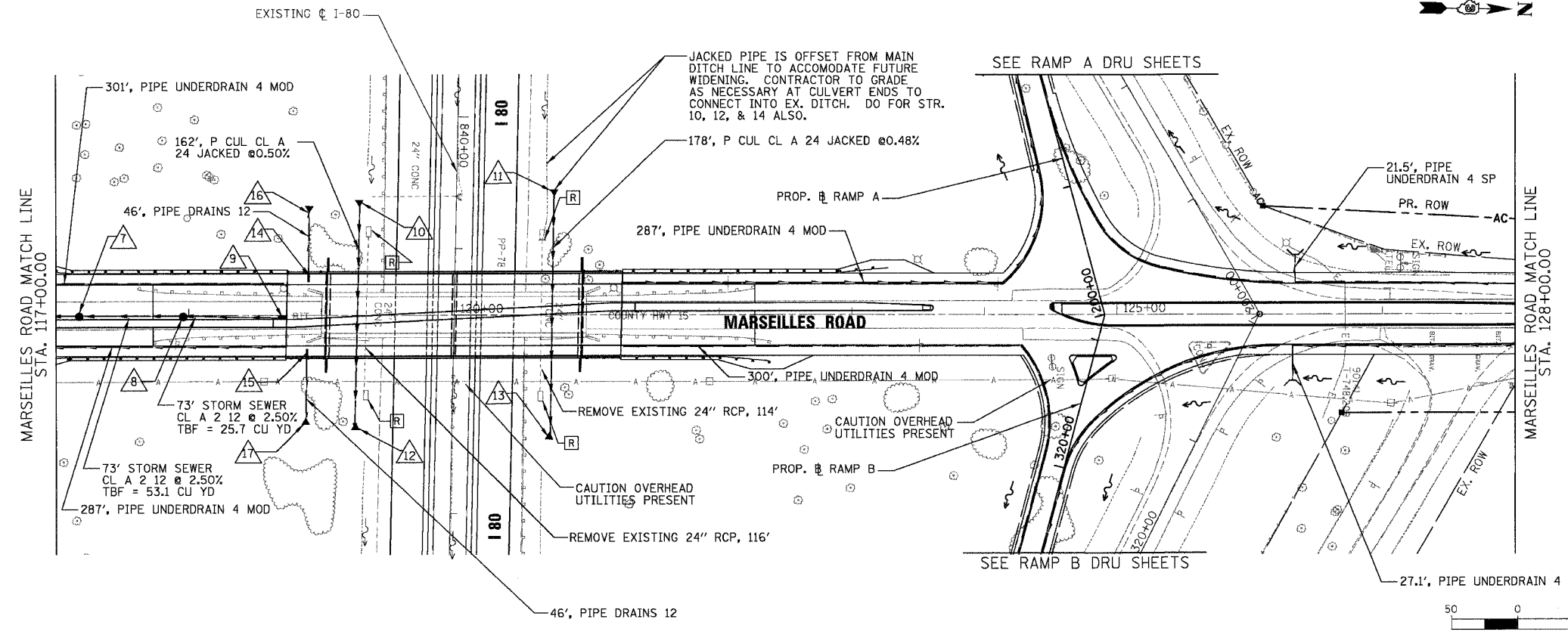


F.A.I. RTE.	SECTION	COUNTY	TOTAL SHEETS	SHEET NO.
80	(50-5) HBK-2	LASALLE	331	93
STA. 117+00.00		TO STA. 128+00.00		
FED. ROAD DIST. NO.		ILLINOIS FED. AID PROJECT		

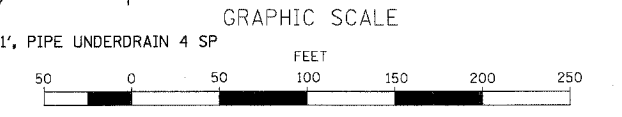


PLAN	SURVEYED	DATE
	BY	
	NOTED	
	DATE	
	NO. OF W.A. CHECKED	
	DATE	
	NO. OF M.A. CHECKED	
	DATE	
	NO. OF F.A. CHECKED	
	DATE	

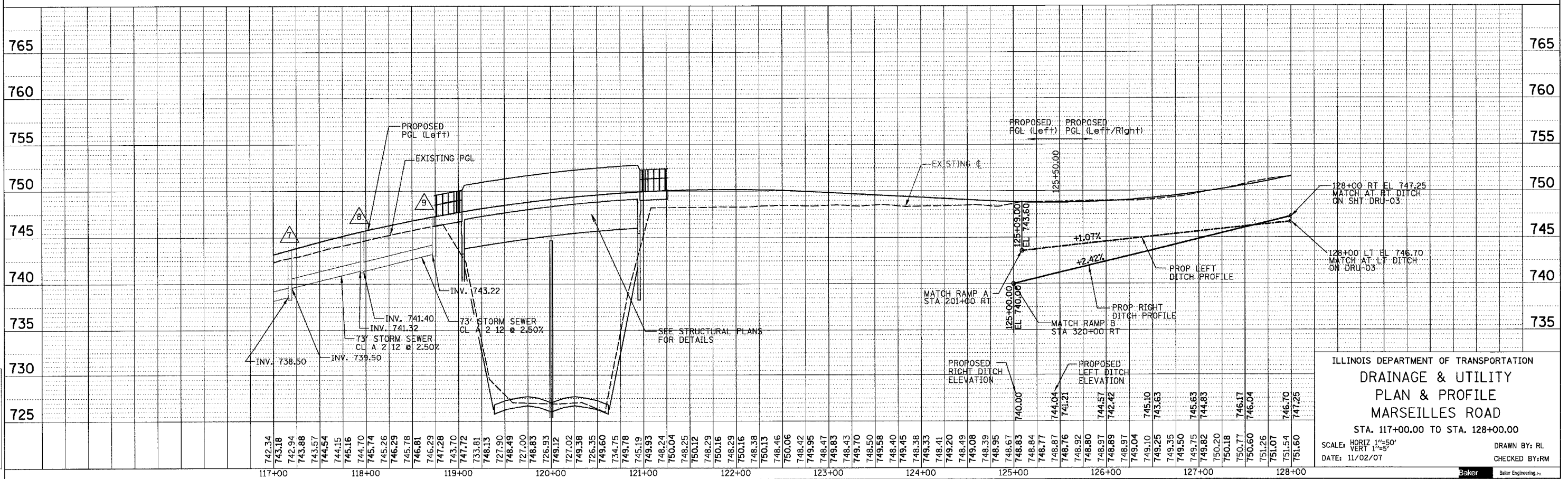
- LEGEND**
- STORM SEWER & CIRCULAR PIPE CULVERT
 - PIPE UNDERDRAIN
 - CONCRETE BOX CULVERT
 - CULVERT HEADWALL
 - PIPE UNDERDRAIN HEADWALL
 - INLET
 - CATCH BASIN
 - FLARED END SECTION
 - BRIDGE APPROACH SHOULDER DRAIN TYPE D STD 609006
 - PROPOSED DITCH
 - EXISTING STRUCTURE REMOVAL
 - PROPOSED STRUCTURE



- 7 STA 117+17.8, 3.0' RT CB TA 4 DIA T23F&G RIM 743.48, S. INV 738.50, N. INV 739.50
- 8 STA 117+95.2, 3.0' RT CB TA 4 DIA T23F&G RIM 745.45, S. INV 741.32, N. INV 741.40
- 9 STA 118+72.6, 3.0' RT INLET TA T23F&G RIM 747.04, INV 743.22
- 10 STA 840+65, 73.0' RT PRC FLAR END SEC 24 INV. = 724.62
- 11 STA 840+54, 74.0' LT PRC FLAR END SEC 24 INV. 725.08
- 12 STA 842+39, 75.0' RT PRC FLAR END SEC 24 INV. 723.75
- 13 STA 842+44, 74.0' LT PRC FLAR END SEC 24 INV. 724.17
- 14 TYPE D INLET BOX, STANDARD 609006
- 15 TYPE D INLET BOX, STANDARD 609006
- 16 STA 118+91, 77.0' LT END SECTIONS 12
- 17 STA 118+88, 77' RT END SECTIONS 12



PROFILE	SURVEYED	DATE
	BY	
	NOTED	
	DATE	
	NO. OF W.A. CHECKED	
	DATE	
	NO. OF M.A. CHECKED	
	DATE	
	NO. OF F.A. CHECKED	
	DATE	



ILLINOIS DEPARTMENT OF TRANSPORTATION
DRAINAGE & UTILITY
PLAN & PROFILE
MARSEILLES ROAD
 STA. 117+00.00 TO STA. 128+00.00
 SCALE: HORIZ 1"=50'
 VERT 1"=5'
 DATE: 11/02/07
 DRAWN BY: RL
 CHECKED BY: RM

