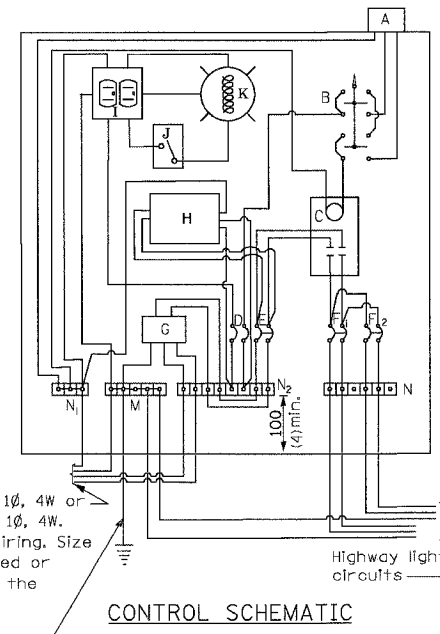
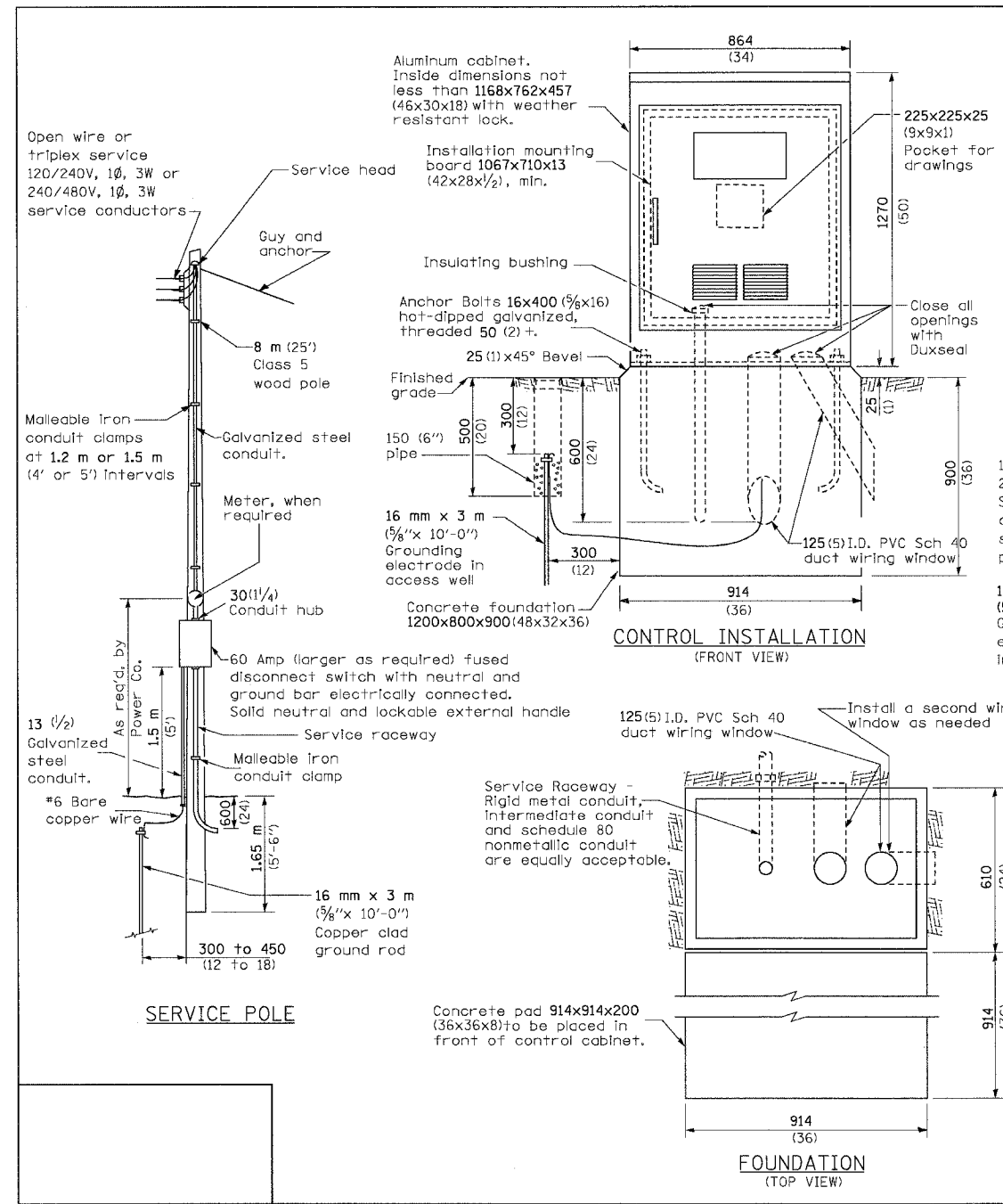


F.A.I. DIST.	SECTION	COUNTY	TOTAL SHEETS	SHEET NO.
80	(50-5)HBK-2	LASALLE	331	118
STA.		TO STA.		
FED. ROAD DIST. NO.		ILLINOIS FED. AID PROJECT		



- MATERIALS**
- A Photocell w/ Integral surge arrester (remote mount in urban areas)
  - B 3 position selector switch HAND-OFF-AUTO
  - C 100 amp\* electrically held contactor, 120V operating coil
  - D 15 amp, 1 pole, circuit breaker
  - E 60 amp\*, 2 pole, main circuit breaker
  - F 20 amp\*, 2 pole, branch circuit breaker (typ). 2 spare c.b. required but not shown
  - G Surge arrester
  - H Transformer (see notes), 2 KVA\*, 240/480V primary, 120/240V sec, single phase
  - I GFCI duplex receptacle
  - J Single pole, single throw switch
  - K Shielded security fixture with 100W rough service Incandescent lamp
  - N<sub>1</sub> Neutral bar
  - M Equipment ground bar
  - N<sub>2</sub> & N Terminal block (typ)
- \* = Size larger if the incoming service is 120/240V, 1Ø

**CONTROL SCHEMATIC**

**GENERAL NOTES**

Locate service pole and control installation adjacent to R.O.W. line with a minimum distance of 9 m (30') from the edge of pavement. Locate in close proximity to the utility transformer so the service drop does not exceed 46 m (150ft) and the total distance of overhead and underground cable (utility transformer to lighting controller) does not exceed 76 m (250ft). Exact location shall be established by the Engineer.

Wiring shall be panel board fashion. All bends shall be right angles. All runs shall be vertical or parallel to panel board. Wires shall be grouped or laced.

All control installation components shall be U.L. listed.

Add receptacle, light, and switch in control cabinet.

For 480 V service, a step down transformer "H" is required.

Raceways shall terminate 75 (3) above top of concrete foundation.

Label equipment ground buss and neutral buss.

All dimensions are in millimeters (inches) unless otherwise shown.

Do not connect N<sub>1</sub> and M at the controller.

- 240 V. SERVICE
- 480 V. SERVICE

DATE	REVISIONS
1/17/07	Corrected
1/19/06	Corrected

**CONTROL INSTALLATION  
Base Mount Cabinet**

LGT005.DGN

**SINGH**  
SINGH & ASSOCIATES, INC.  
CONSULTING ENGINEERS

**Baker**  
Baker Engineering, Inc.

REVISIONS	
NAME	DATE

ILLINOIS DEPARTMENT OF TRANSPORTATION

**STANDARD DETAILS**

SCALE: NONE  
DATE 11/02/07

DRAWN BY VG  
CHECKED BY PV