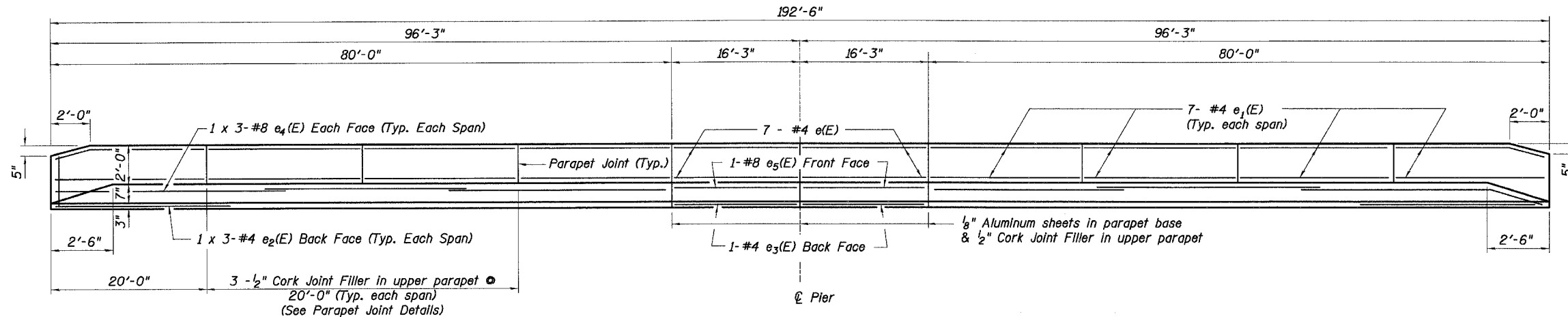
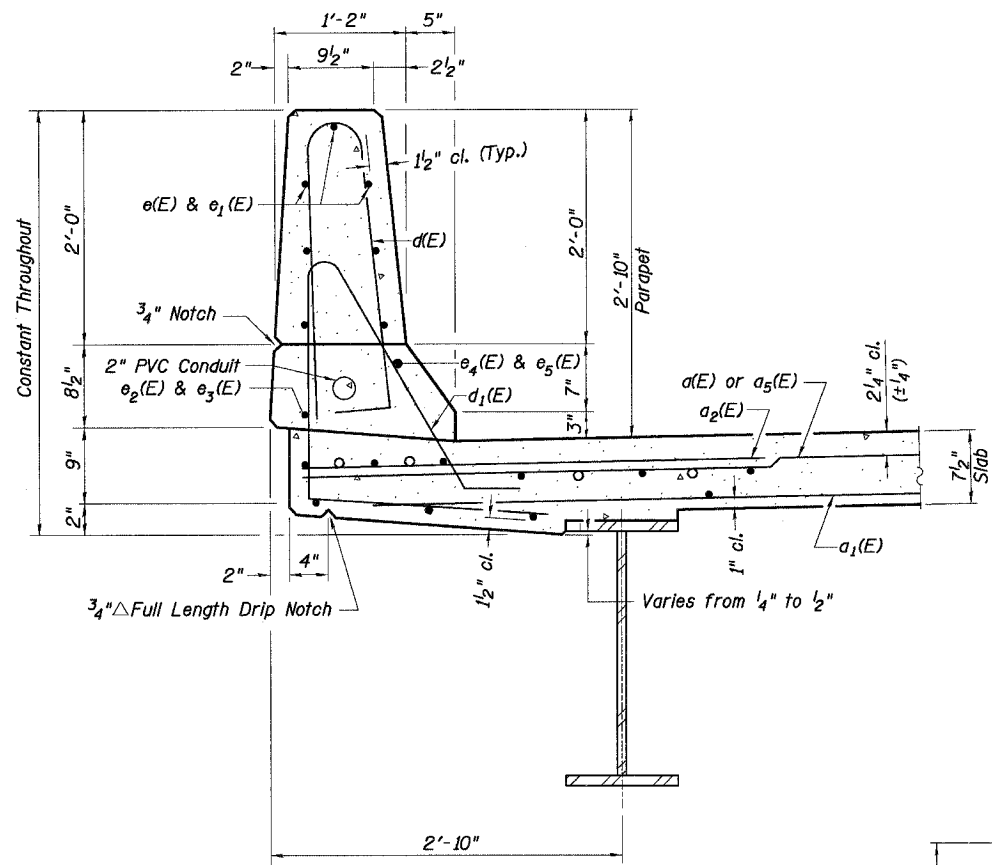


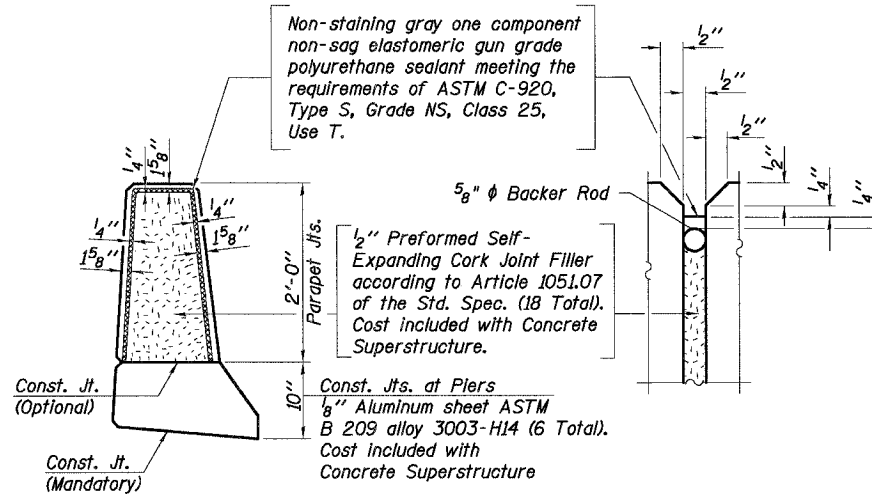
F.A.I. RTE.	SECTION	COUNTY	TOTAL SHEETS	SHEET NO.
80	50-5HBK-2	LASALLE	331	139
STA. 105+00		TO STA. 136+00		
FED. ROAD DIST. NO. 7 ILLINOIS FED. AID PROJECT				
SHEET NO. S11 OF S22				



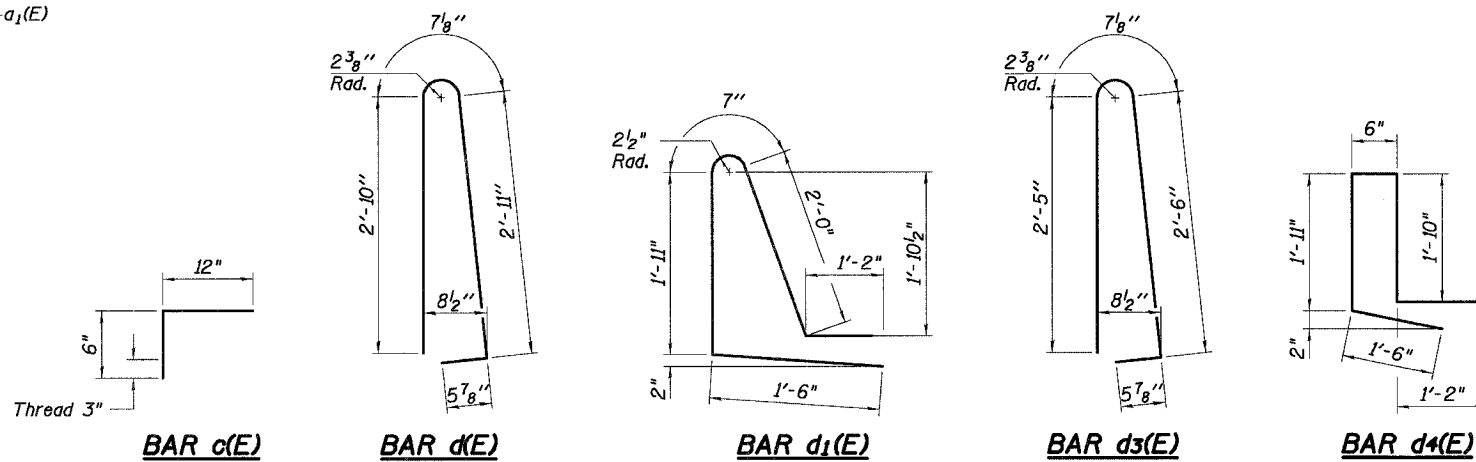
**INSIDE ELEVATION OF PARAPET**  
(West parapet shown, east is similar)



**SECTION THRU PARAPET**



**PARAPET JOINT DETAILS**



**MIN. BAR LAP LENGTHS**

- #4 - 1'-8"
- #5 - 2'-2"
- #6 - 2'-7"
- #8 - 4'-6"

**SUPERSTRUCTURE BILL OF MATERIAL**

Bar	No.	Size	Length	Shape	
a(E)	462	# 5	34'-2"	—	
a1(E)	290	# 5	33'-6"	—	
a2(E)	462	# 6	4'-6"	—	
a5(E)	462	# 5	30'-4"	—	
a6(E)	290	# 5	29'-8"	—	
b(E)	396	# 5	33'-6"	—	
b1(E)	65	# 6	55'-0"	—	
b2(E)	385	# 5	29'-0"	—	
b3(E)	35	# 5	29'-0"	—	
c(E)	332	# 5	1'-8"	┌	
c1(E)	166	# 5	3'-8"	—	
d(E)	410	# 5	6'-10"	┌	
d1(E)	410	# 5	7'-2"	┌	
d3(E)	12	# 5	6'-0"	┌	
d4(E)	12	# 5	5'-3"	┌	
e(E)	28	# 4	15'-11"	—	
e1(E)	112	# 4	19'-8"	—	
e2(E)	12	# 4	27'-9"	—	
e3(E)	4	# 4	15'-11"	—	
e4(E)	12	# 8	29'-7"	—	
e5(E)	4	# 8	15'-11"	—	
Reinforcement Bars, Epoxy Coated				Pound	95,710
Concrete Superstructure				Cu. Yds.	365
Bar Splicers				Each	884
Protective Coat				Sq. Yd.	1,496
Bridge Deck Grooving				Sq. Yd.	1,267

**Notes:**

1. Bars Indicated thus 1 x 4-#5 etc. indicates 1 line of bars with 4 lengths per line.
2. Any e-type bar shall not pass through aluminum sheets.
3. Work this sheet with sheets S-8 & S-9.

REVISIONS	
NAME	DATE

ILLINOIS DEPARTMENT OF TRANSPORTATION  
**PARAPET AND MEDIAN REINFORCEMENT**  
 MARSELLES ROAD (FAS Rt. 268)  
 OVER I-80 (F.A.I. ROUTE 80)  
 STRUCTURE NUMBER 050-0245  
 LA SALLE COUNTY STATION 120+00.08 SECTION 50-5HBK-2  
 DESIGNED: JT DRAWN: RL  
 DATE: 11/02/07 CHECKED: KZ CHECKED: KZ

**Baker**

Baker Engineering, Inc.