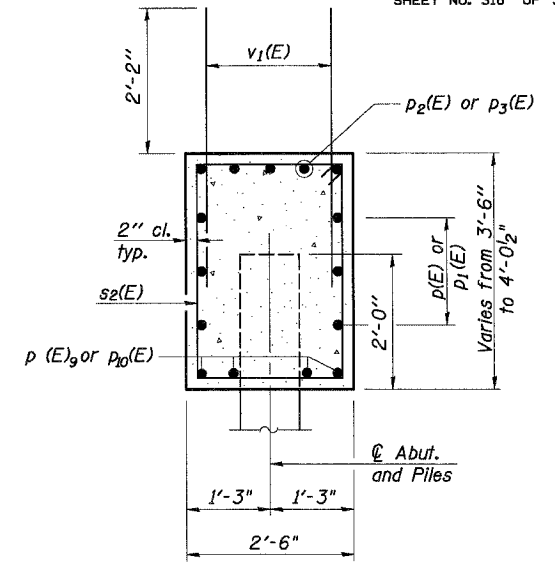
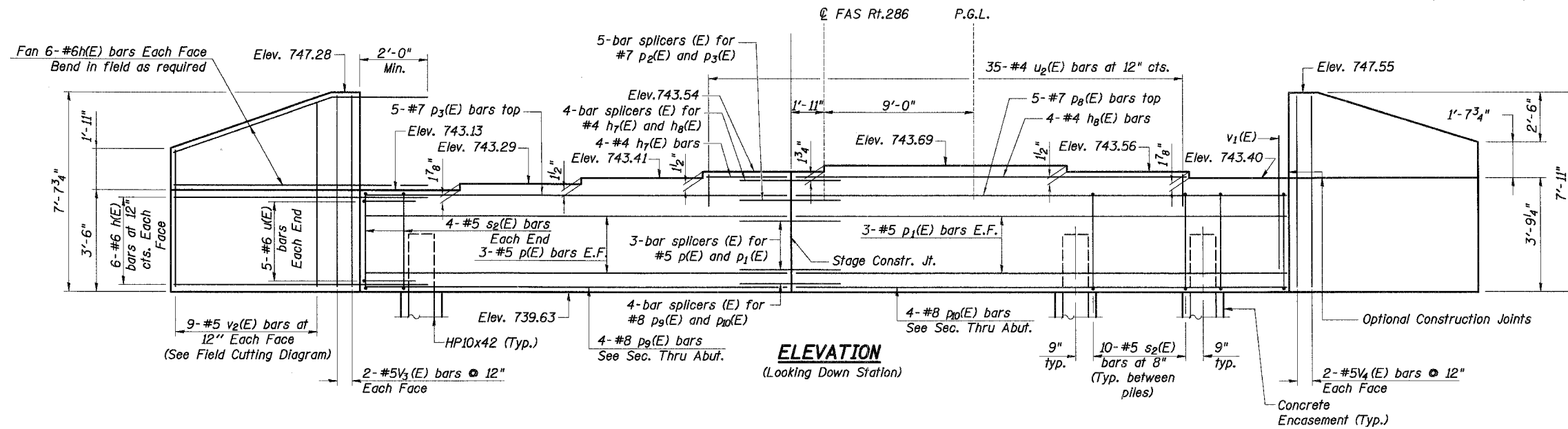


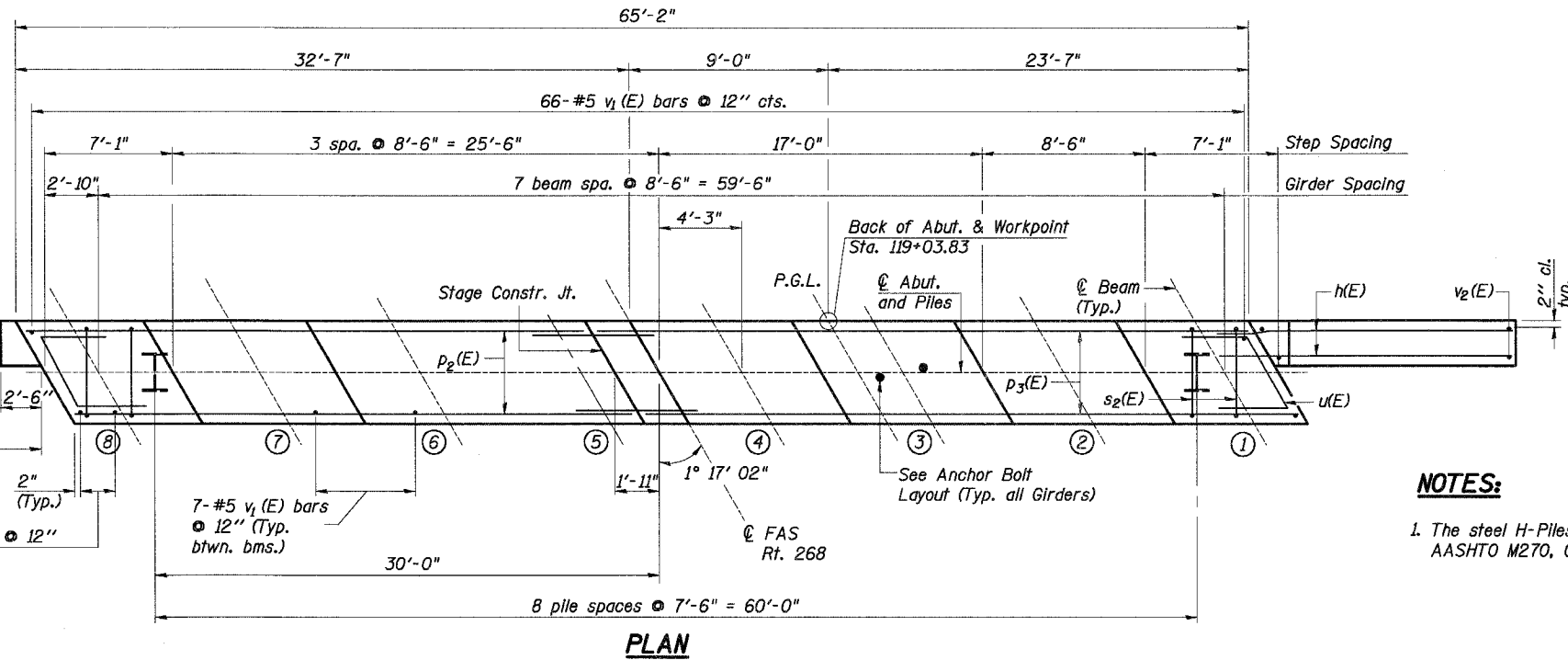
F.A.I. RTE.	SECTION	COUNTY	TOTAL SHEETS	SHEET NO.
80	50-SHBK-2	LASALLE	331	146
STA. 105+00		TO STA. 136+00		
FED. ROAD DIST. NO. 7		ILLINOIS FED. AID PROJECT		
SHEET NO. S18 OF S22				

Notes: Pour steps monolithically with cap.



PILE DATA

Type: HP10x42
 Nominal Required Bearing: 315 kips
 Allowable Resistance Available: 105 kips
 Est. Length: 45'
 No. Required: 8
 Test Piles: 1



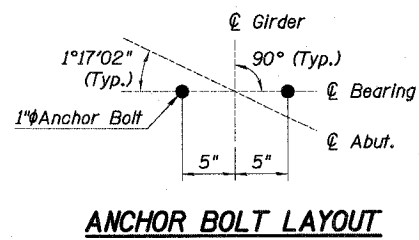
SEC. THRU ABUT.

BILL OF MATERIAL

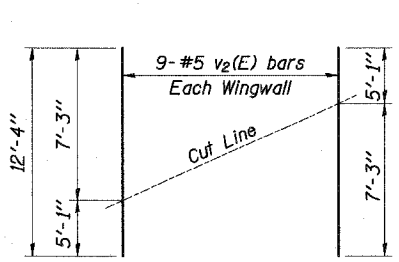
Bar	No.	Size	Length (ft)	Shape
h(E)	48	# 6	12'-1"	—
h7(E)	4	# 4	6'-3"	—
h8(E)	4	# 4	27'-1"	—
p(E)	6	# 5	30'-4"	—
p1(E)	6	# 5	34'-2"	—
p2(E)	5	# 7	34'-2"	—
p3(E)	5	# 7	30'-4"	—
p9(E)	4	# 8	30'-4"	—
p10(E)	4	# 8	34'-2"	—
s2(E)	88	# 5	11'-5"	□
u(E)	10	# 6	8'-2"	□
u2(E)	35	# 4	5'-0"	□
v1(E)	119	# 5	4'-4"	—
v2(E)	18	# 5	12'-4"	—
v3(E)	4	# 5	7'-3"	—
v4(E)	4	# 5	7'-6"	—
Concrete Structures		Cu. Yd.	28	
Reinforcement Bars, Epoxy Coated		Pound	4,830	
Structure Excavation		Cu. Yd.	338	
Bar Splicers		Each	19	

NOTES:

1. The steel H-Piles shall be according to AASHTO M270, Grade 50.

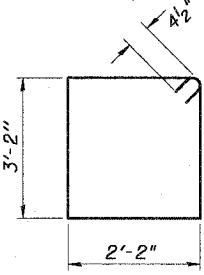


ANCHOR BOLT LAYOUT

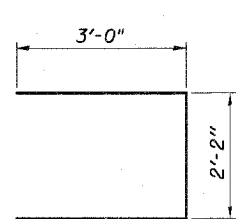


FIELD CUTTING DIAGRAM

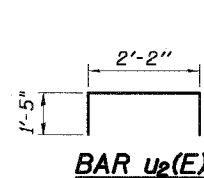
Order v2(E) full length. Cut as shown and use remainder of bars in opposite face.



BAR s2(E)



BAR u(E)



BAR u2(E)

REVISIONS	
NAME	DATE

ILLINOIS DEPARTMENT OF TRANSPORTATION
SOUTH ABUTMENT
 MARSELLES ROAD (FAS Rt. 268)
 OVER I-80 (F.A.I. ROUTE 80)
 STRUCTURE NUMBER 050-0245
 LA SALLE COUNTY SECTION 50-SHBK-2
 STATION 120+00.08
 DATE: 11/16/07
 DESIGNED: DM
 CHECKED: KZ
 DRAWN: DM
 CHECKED: KZ



H:\07465\3.0 deliverables\3.3 structure\Drawings\Final\South Abut.dgn
 11/16/2007