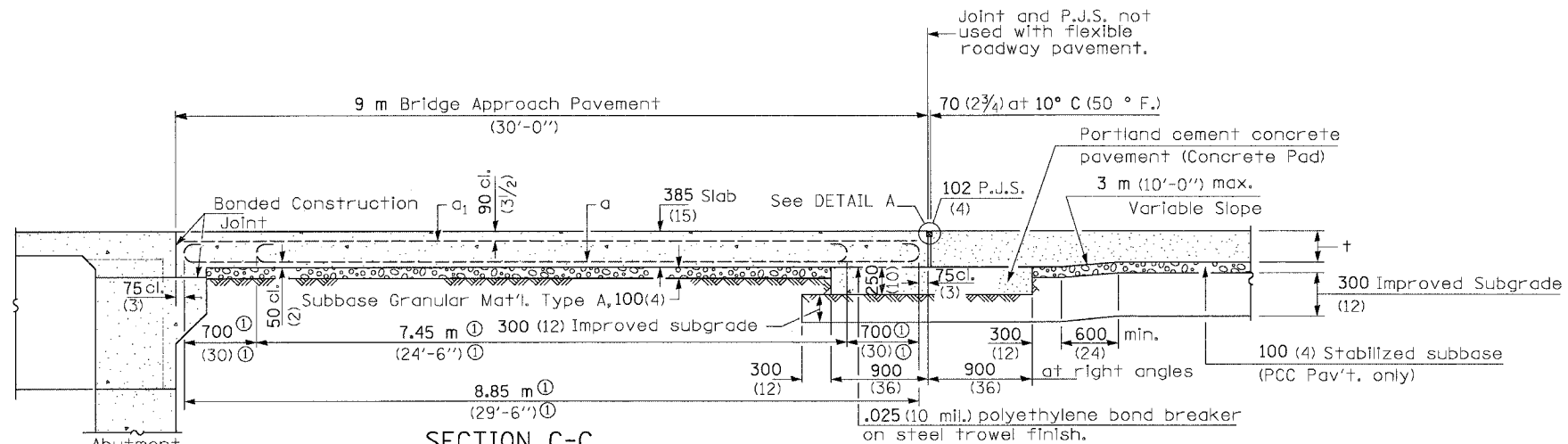
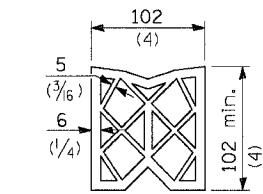


F.A.I. RTE.	SECTION	COUNTY	TOTAL SHEETS	SHEET NO.
80	(50-5) HBK-2	LASALLE	331	156
STA.		TO STA.		
FED. ROAD DIST. NO.	ILLINOIS	FED. AID PROJECT		

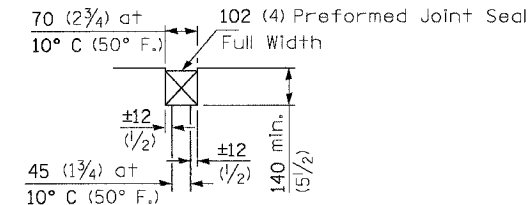


SECTION C-C

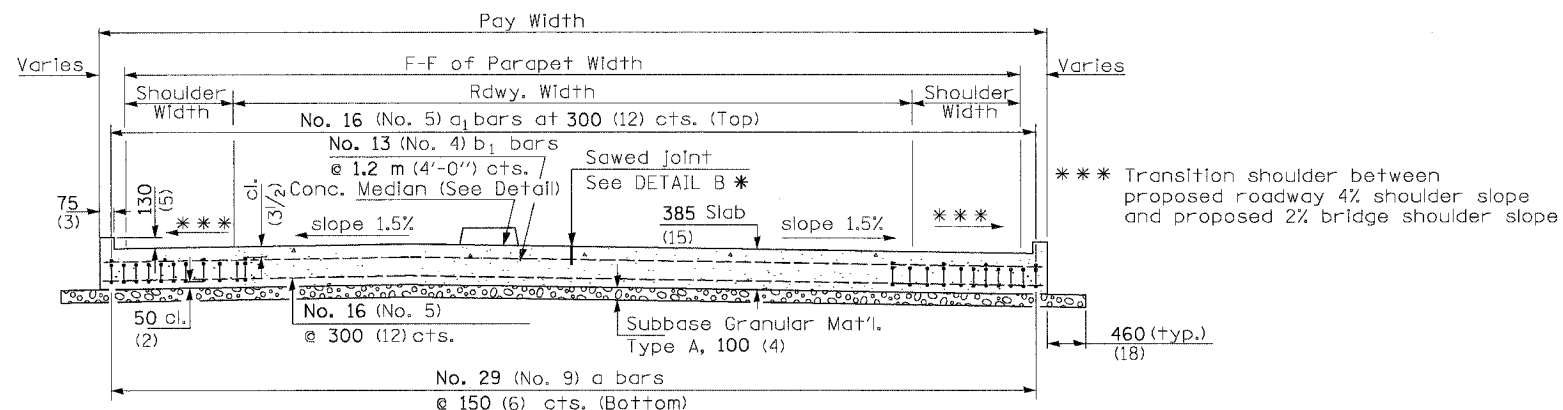
① Stagger No. 29 (No. 9) a bars as shown on plan - full width



PREFORMED JOINT SEAL



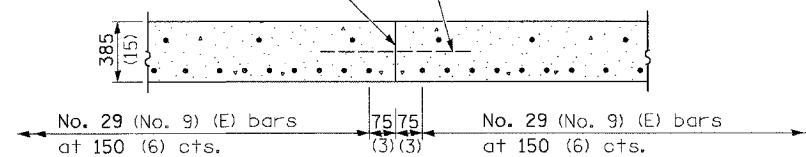
DETAIL A



SECTION D-D

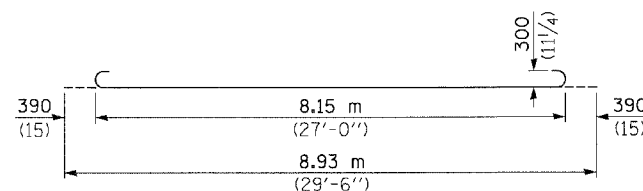
(See Plan for Dimensions not shown)
All reinforcement bars shall be epoxy coated.

Longitudinal Construction Joint in accordance with details shown on Standard 420001.



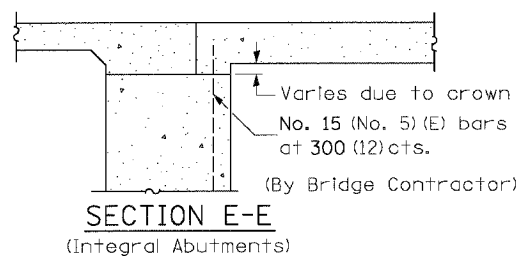
OPTIONAL LONGITUDINAL CONSTRUCTION JOINT

As approved by the Engineer, the Contractor may elect to reduce the widths of pour by use of the Optional Longitudinal Construction Joint shown. Joints shall be located at the edge of a traffic lane.

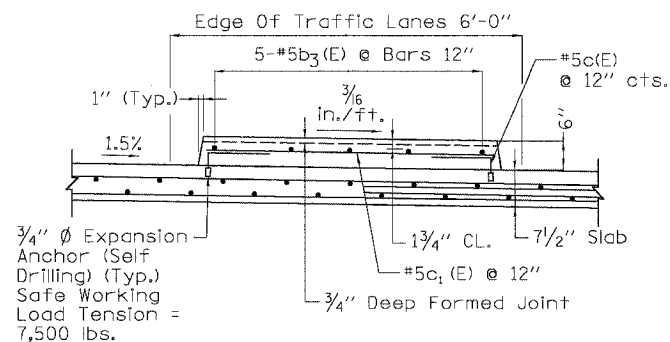


BAR a

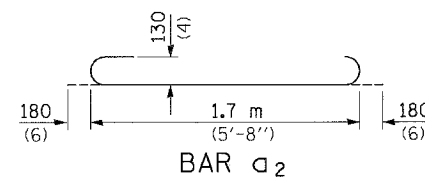
All dimensions are in millimeters (inches) unless otherwise shown.



SECTION E-E
(Integral Abutments)



CONCRETE MEDIAN



BAR a₂

DESIGN STRESSES

f_y = 400 MPa (60,000 p.s.i.)
f'c = 24 MPa (3,500 p.s.i.)
n = 8.5

GENERAL NOTES

THICKNESS-"t"=Thickness of Pavement.
See Standard 421001 for reinforcement details not shown.
See Standard 420001 for joint details not shown.

REVISIONS		ILLINOIS DEPARTMENT OF TRANSPORTATION
NAME	DATE	
		<p align="center">BRIDGE APPROACH PAVEMENT (SPECIAL) DETAIL</p> <p>SCALE: NONE DRAWN BY: KM</p> <p>DATE: 11/02/07 CHECKED BY: SE</p>

Baker
Baker Engineering, Inc.