

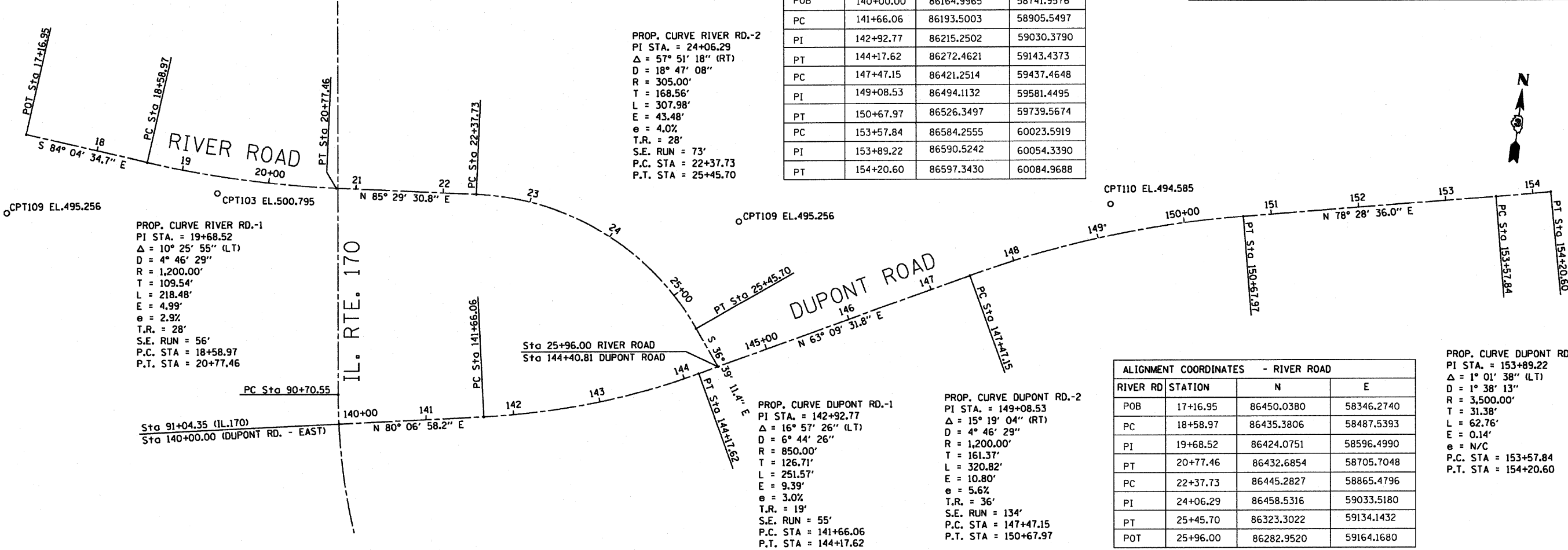


F.A.P. RTE.	SECTION	COUNTY	TOTAL SHEETS	SHEET NO.
786	(109) BR	LASALLE	351	25

STA. TO STA.
FED. ROAD DIST. NO. ILLINOIS FED. AID PROJECT

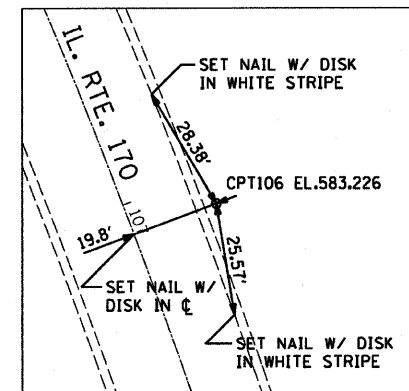
ALIGNMENT COORDINATES - DUPONT ROAD

DUPONT RD STATION	N	E
POB 140+00.00	86164.9965	58741.9576
PC 141+66.06	86193.5003	58905.5497
PI 142+92.77	86215.2502	59030.3790
PT 144+17.62	86272.4621	59143.4373
PC 147+47.15	86421.2514	59437.4648
PI 149+08.53	86494.1132	59581.4495
PT 150+67.97	86526.3497	59739.5674
PC 153+57.84	86584.2555	60023.5919
PI 153+89.22	86590.5242	60054.3390
PT 154+20.60	86597.3430	60084.9688

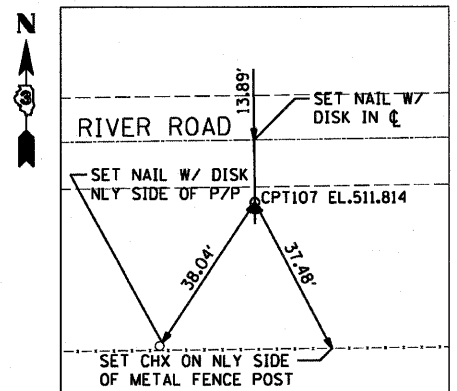


ALIGNMENT COORDINATES - RIVER ROAD

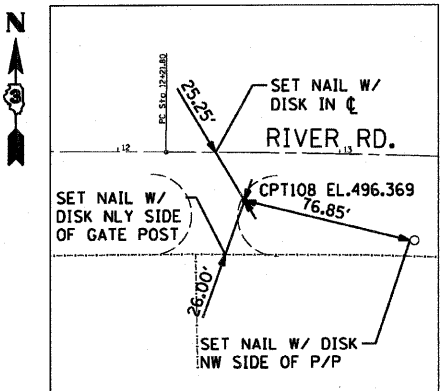
RIVER RD STATION	N	E
POB 17+16.95	86450.0380	58346.2740
PC 18+58.97	86435.3806	58487.5393
PI 19+68.52	86424.0751	58596.4990
PT 20+77.46	86432.6854	58705.7048
PC 22+37.73	86445.2827	58865.4796
PI 24+06.29	86458.5316	59033.5180
PT 25+45.70	86323.3022	59134.1432
POT 25+96.00	86282.9520	59164.1680



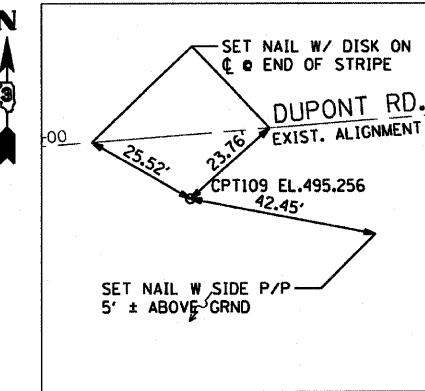
CONTROL POINT #106
 SET 18" #5 REBAR WITH CAP
 (700' ± S. OF PROJECT LIMITS)
 N 84921.2530
 E 59681.3310
 ELEV. 583.226



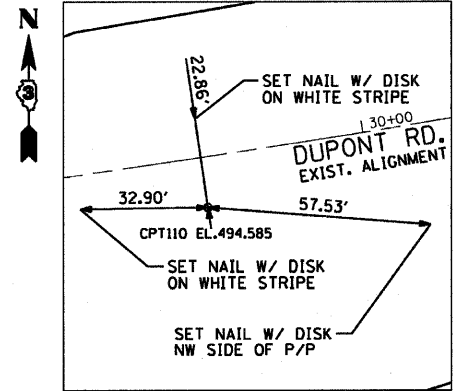
CONTROL POINT #107
 SET 18" #5 REBAR WITH CAP
 (1230' ± W. OF PROJECT LIMITS)
 N 86457.0050
 E 57151.5110
 ELEV. 511.814



CONTROL POINT #108
 SET 18" #5 REBAR WITH CAP
 IN GRASS AT EDGE OF DRIVEWAY
 (820' ± W. OF PROJECT LIMITS)
 N 86455.5330
 E 57887.4130
 ELEV. 496.369



CONTROL POINT #109
 SET 18" #5 REBAR WITH CAP
 RIVER RD. STA. 24+85.07, 111.01' LT.
 N 86450.5920
 E 59167.5790
 ELEV. 495.256



CONTROL POINT #110
 SET 18" #5 REBAR WITH CAP
 (NO ID)
 STA. 149+40.61, 12.52' LT.
 N 86496.7430
 E 59583.7900
 ELEV. 494.5850

DATE = 10/1/2007
 FILE NAME = MFILES
 PLOT SCALE = ESCALER
 USER NAME = PROJNET

REVISIONS	
NAME	DATE

ILLINOIS DEPARTMENT OF TRANSPORTATION

ALIGNMENT & TIES
 IL 170 BRIDGE REPLACEMENT AT SENECA
 2 OF 2

SCALE: DATE OCTOBER, 2007

DRAWN BY CJO
 CHECKED BY JCL